



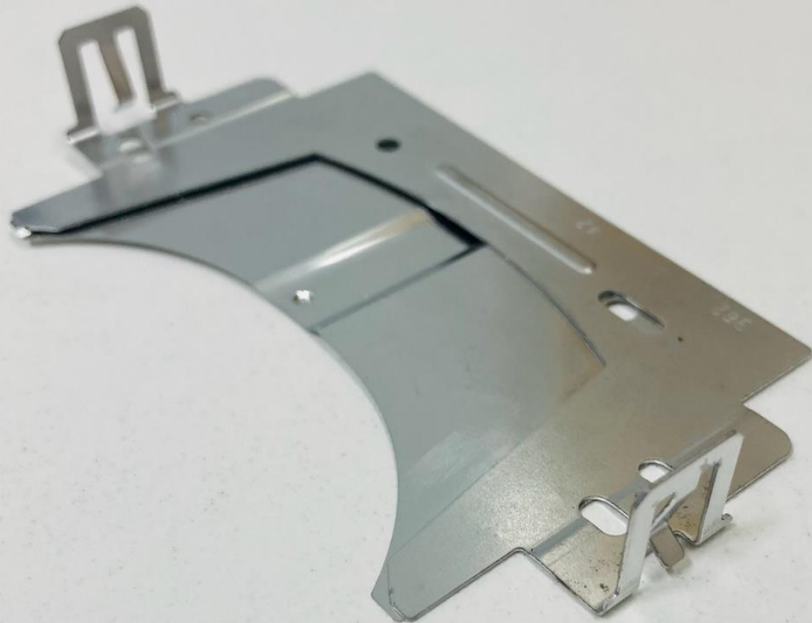
**MASTER  
PRESSING  
WORKS**

# *Special Features*

- *Fully localised part/ import substitution.*
- *Progressive Tooling fully developed inhouse.*
- *Laser welding capability added.*
- *QR code marking machine added.*
- *Capacity to build 2000 parts per day*
- *Make in India approach*



- *Raw Material- SS301 BA Finish*
- *Thickness- 0.1mm & 0.4mm*



- *Raw Material- SS301 BA Finish*
- *Thickness- 0.1mm & 0.4mm*



- *Raw Material- SS301 BA*
- *Thickness- 0.1 mm*

## *Typical Applications*

1. Required in Battery packs  
assy modules.
2. Energy storage solutions
3. Vehicle Telematics
4. Integrated Antennas





**MASTER  
PRESSING  
WORKS**

***THANK YOU***

