



Violin Technologies

www.violintec.com



Your Global
**Contract
Manufacturing
& Sourcing**
Partner

Certified by





Our Services



Sourcing & Vendor Consolidation



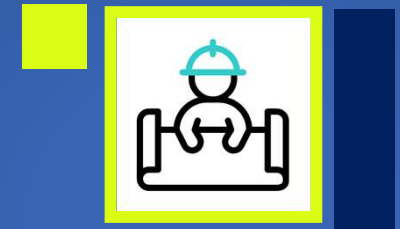
- **Line Leasing** Model
- Develop **Supplier Metrics**
- **Process & Plan** for each part number

Manufacturing Services



- **Cable & Wire Harness** Assemblies
- **Sheet Metal & Stamped** Metal part assemblies
- **Electro Mechanical** Assemblies
- **Machined** Components & Assemblies

Engineering Services



- **Project based Engineering** Services
- Build Your Own Team **(BYOT)**

Sourcing & Vendor Consolidation

We are an extension of your sourcing and purchasing organization



Line Leasing model

We help your manufacturing units **scale up to the market** demands.



Develop **Supplier Quality** Metrics

We help you **develop your supplier quality metrics**, so you on board the right supplier, **adhering to your quality standards**



Process & plan for each part number

We help you with the **right manufacturing process, a control plan** which includes a product part approval plan, and **a quality plan** for each part that contribute towards your success.





Engineering Services

We offer a couple of options to our customers



Project-Based Engineering Service

- **Identify and connect** to your global fulfillment needs.
- **Develop a formulated plan** with customer guidance on user experience Design
- **Product design and development**



Build Your Own Team (BYOT)

- We help **augment your Engineering, Design, and Supply chain** workforce
- Manage the interview process with the customer with **full-cycle recruitment and team retention**



Industries We Serve



Aerospace



Medical



Industrial



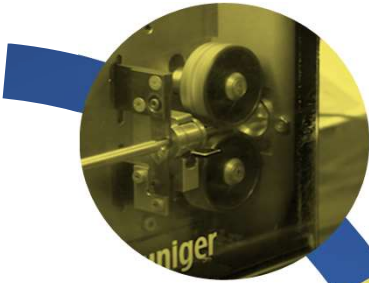
Mobility



Food

Our
Clientele



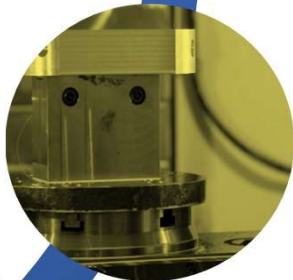


Cable & Wire Harness Assemblies



Sheet Metal/Stamped Parts & Assemblies

Our capabilities in industrial manufacturing are spread wide across manufacturing, assembling and global supply chain management.

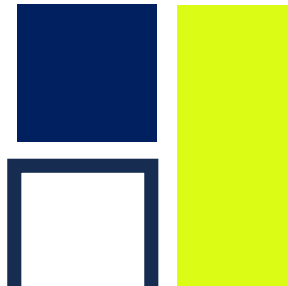



Machined Components & Assemblies



Electro-Mechanical Assemblies

Capability



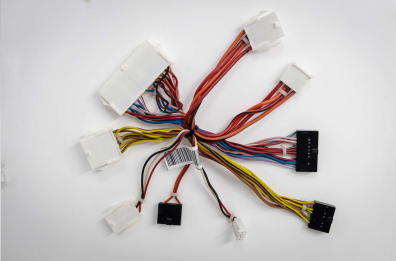
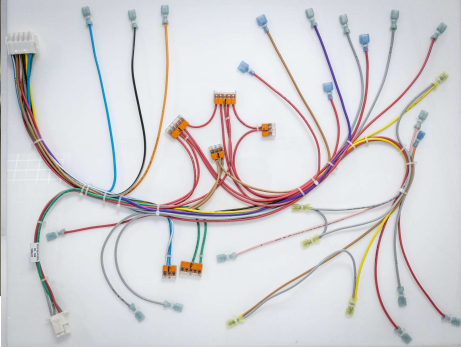
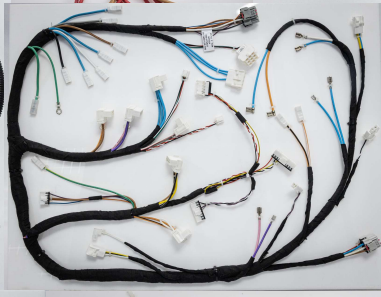
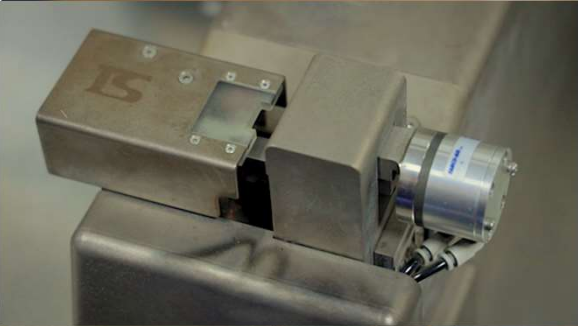


Cable & Wire Harness

Assembly Engineering Services

- **Design** & Development Service
- **Component** Engineering
- **Obsolescence Management**
- **Tool Design & Development** Services
- **VA / VE** Services
- **Quality** Services
- **Test** Services
- **Environmental & Reliability** Test Services





Cable & Wire
Harness Assemblies



Sheet Metal / Stamped parts & Assemblies

Capabilities

- Sheet Metal **Fabrication & Assemblies**
- Conventional Stamping - **Progressive & Stage** tools
- **Laser Cutting**
- **CNC Bending**

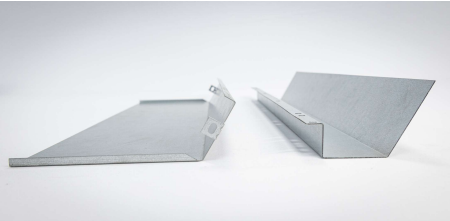
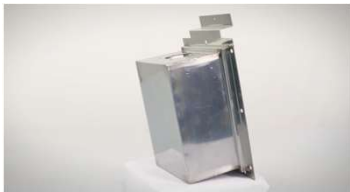
Materials Handled

- Stainless **Steel (301, 304, 430)**
- **Mild** Steel
- **Galvanized** Steel
- **Galvannealed** Steel
- **Aluminized** Steel
- **Aluminum (6061-T6, 5052-H32)**
- **Brass (CuZn37)**
- **Spring** Steel



Sheet Metal / Stamped

parts & Assemblies





Machining Capabilities

- **CNC Turning**
- **CNC Milling (3, 4 & 5-Axis)**
- **Assemblies (with TIG, MIG & Spot Welding)**

Software Used

- **NanoCAD**
- **Solidworks**
- **Mastercam**

Materials Handled

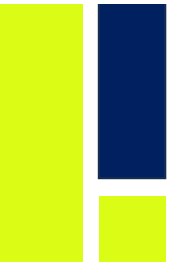
- **Nickel** Alloys
- **Titanium** Alloys
- **Aluminum** Alloys (**5000, 6000 & 7000** Series)
- **Stainless** steel (**302, 303, 304, 430, 630 & 17 - 4 PH**)
- **Carbon** Steel (**1018, 1141, 1144, 1250**)
- Castings (**ADC 10, ADC 12, Zamak 3**)
- **Nylon, Ultem, Peek**

Special Processes (Outsourced)*

- Anodizing
- Passivation
- **Heat** Treatment
- **Painting / Powder** Coating

*All our suppliers for special processes are NADCAP approved.



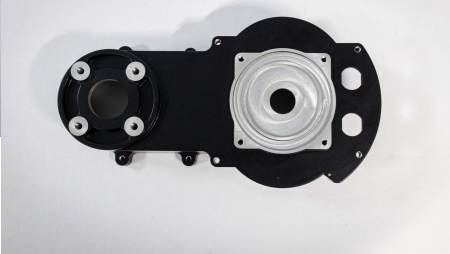
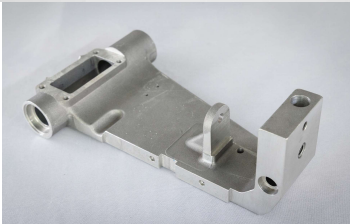


Machined Parts
Turning

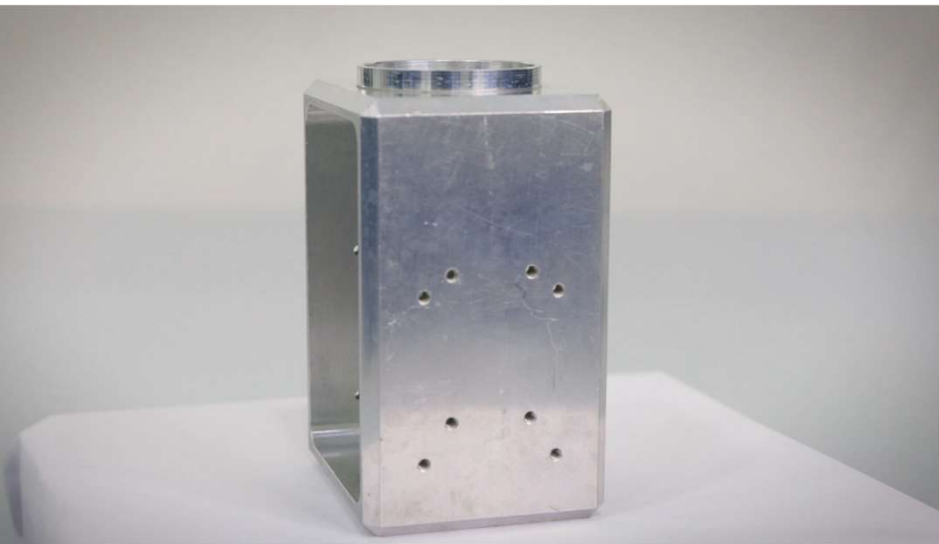




Machined Parts
Turning+Milling



Castings
Sample Parts

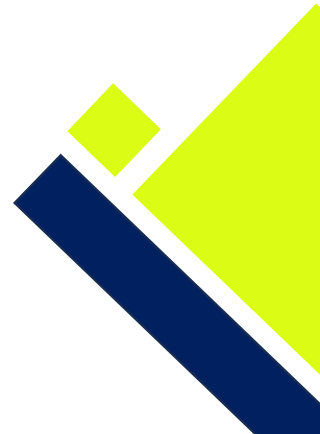


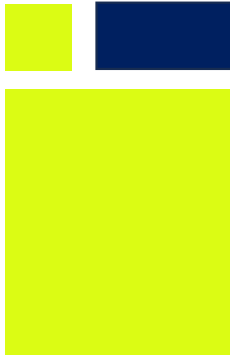
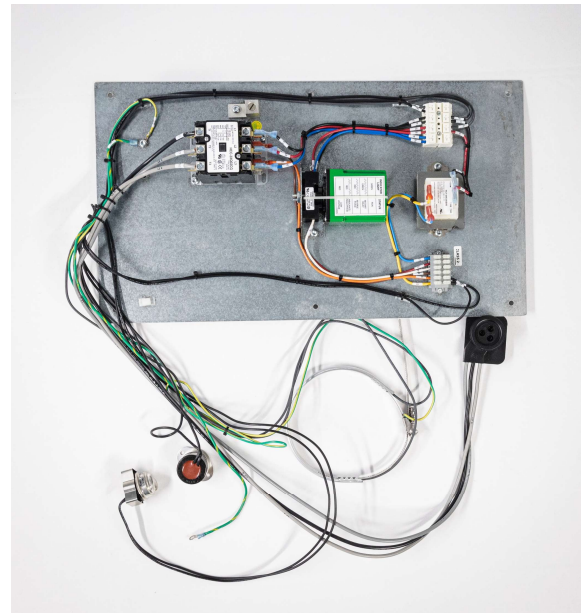
Sample Parts **Machined** (Defense Aerospace)

We were engaged in the successful development of a **critical milling component, Dummy CCD** for Instruments Research & Developments Establishment **(IRDE-DRDO)**, Dehradun for **GIMBAL** Project through Spiral EHL (Defsys), Bengaluru.

Material : Aluminum 7075-T651 alloy

Operations : Multiple **milling operations** with **HELICOIL** threads





Electro Mechanical Assemblies

Tooling Capability

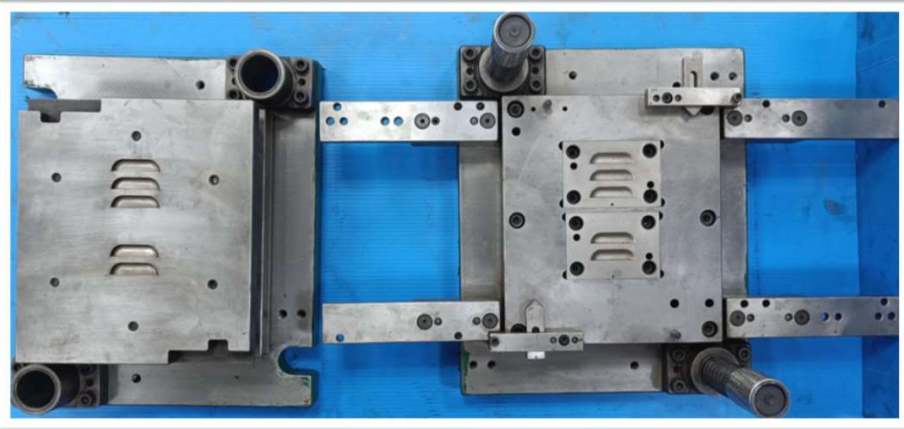
In house Tool Room with the following capabilities:

- Tool **Design**
- Tool **Manufacture**
- Tool **Assembly**
- **Fixture Design & Manufacture In-house**



Machine	Manufacturer	Model	Tolerance (mm)	Precision (mm)
VTM Ram Turret Milling Machine with Stand	VTM (Taiwan)	4E	± 0.01	0.01

Machine	Manufacturer	Model	Tolerance (mm)	Precision (mm)
Surface Grinding Machine	Okamoto	PSG450BN	± 0.01	0.01

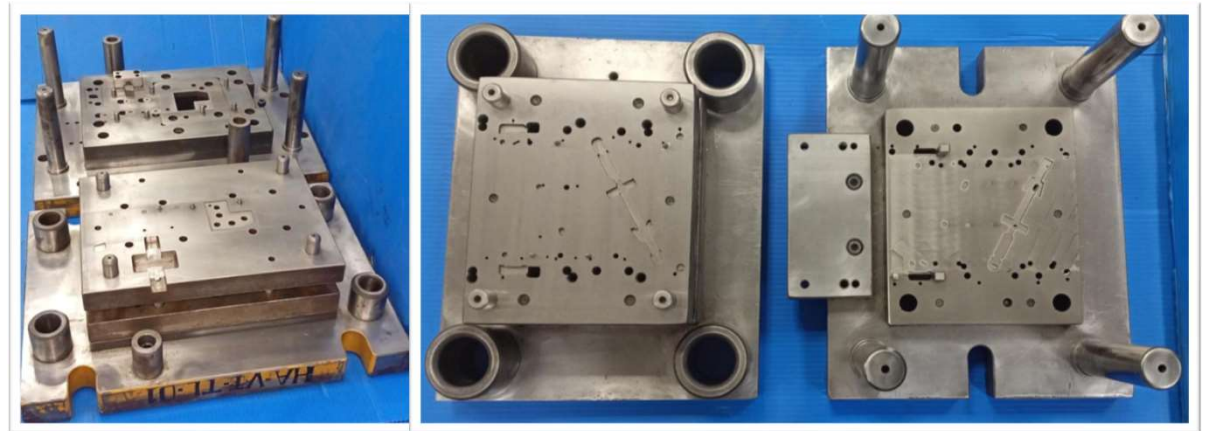


Louivering Tool

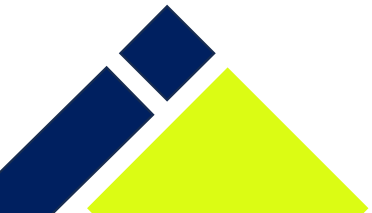


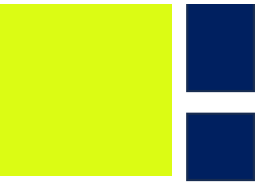
Piercing Tool

Tooling Capability



Semi - Progressive Tool

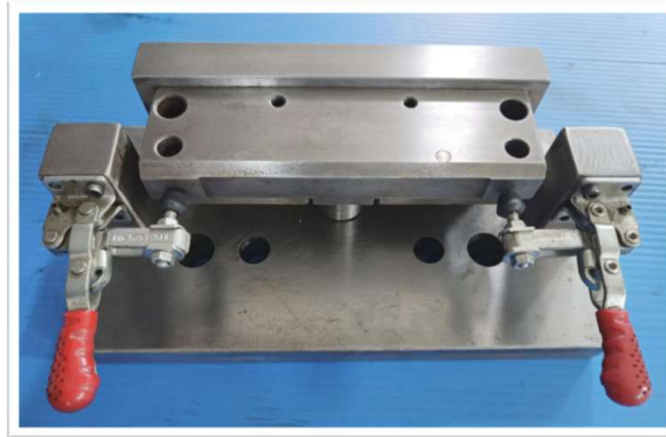




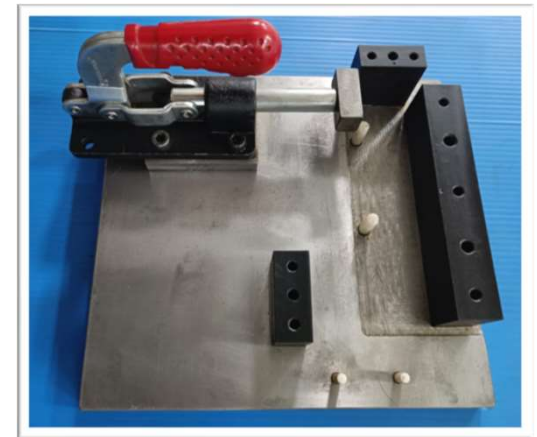
Fixtures



Machining Fixture



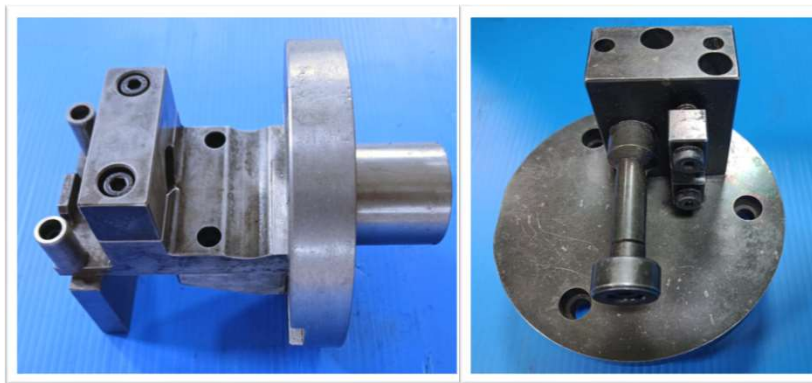
Reaming Fixture



Assembly Fixture



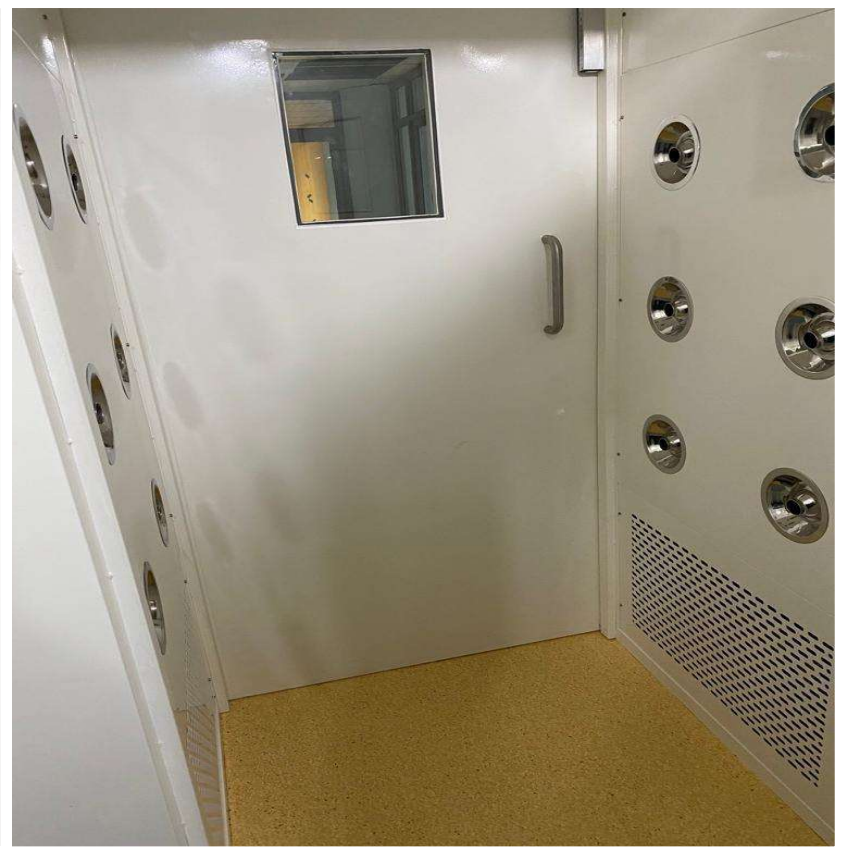
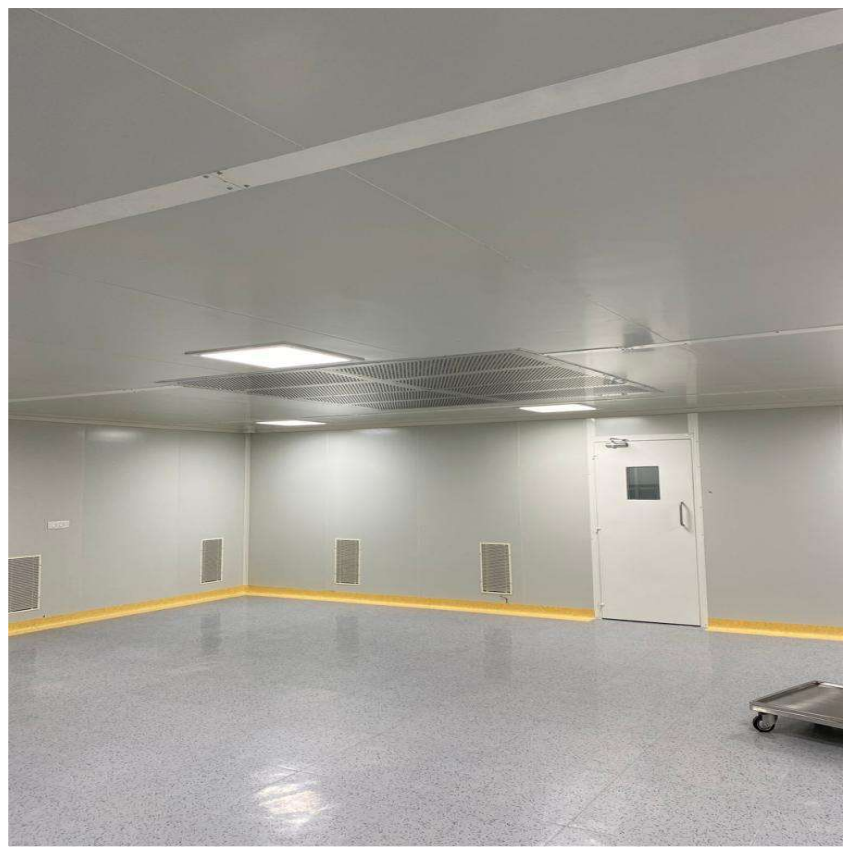
Drilling Fixture



4th Axis Machining Fixture



Machining Fixture



Class 10000 Clean Room for Manufacturing



Our **Offices & Factories**

Main Office

1190 Miraloma way, Suite P
Sunnyvale, CA
CA 94085
Mob: +1 510 674 3973

Office

1435 S. Jefferson Suite,
Cookeville, TN 38506

Ware House

6200 S Oak Park Ave. Unit B
Chicago, IL 60638



Unit-1 (Tool Room & Wire Rack Manufacturing) Unit-2 (Machining)

Plot No. 149, 12th Main Road
SIDCO Industrial Estate
Thirumudivakkam
Chennai 600 044

Unit-3 (Cables & Wire Harness, HLA) Unit-4 (Sheet Metal, Stamping & Machining)

SDF - II, 1,2,3,4,20,21
MEPZ Special Economic Zone
Tambaram,
Chennai 600 045
Mob: (+91) 8015100792



