



COMPANY PROFILE

**ENVISYS TECHNOLOGIES PVT LTD
BENGALURU - INDIA**

ENVISYS

MANUFACTURING FACILITY AT BENGALURU

- ENVIRONMENTAL TEST CHAMBERS
- SALT SPRAY CHAMBERS
- DUST CHAMBERS
- RAIN CHAMBERS
- ALTITUDE CHAMBERS
- THERMAL SHOCK CHAMBERS
- VIBRATION CHAMBERS

ಎನ್ವಿಸಿಸ್ ಟೆಕ್ನಾಲಜೀಸ್ ಪ್ರೈವೇಟ್ ಲಿಮಿಟೆಡ್
ENVISYS TECHNOLOGIES PVT LTD
8B-116, 7th Cross Road, 1st Stage,
Punjab Industrial Estate, Bengaluru-560033

Envisys Technologies is an ISO 9001-2015 certified company promoted by Engineering and Management background professionals of more than forty years of cumulative experience in design, manufacture, marketing and service of environmental test chambers with an objective to offer high-quality products at competitive prices with ingenious design and strategy to reduce costs

BUSINESS VERTICALS

One-Stop Solution Provider in Environmental Testing



MANUFACTURING



REFURBISHMENT



MAINTENANCE



REPAIR / SERVICE



RENTALS

Manufacturing of standard and custom-built Environmental Test Chambers

Refurbishment of old/unused Environmental Test Chambers of any make

Annual Maintenance (Preventive or Comprehensive) of Environmental Test Chambers

Repair/Service of Environmental Test Chambers on call basis at customer sites

Rentals of Environmental Test Chambers on monthly or yearly basis

Meet Our Founders

The founders of Envisys Technologies after identifying the need for a reliable and competitive supplier in the environmental testing market to suffice the upcoming demand in the market for Environmental Test Chambers especially the one with an ability to customize the requirements of the industries Envisys Technologies is one such venture started by this trio with an objective to manufacture environmental test chambers that not only satisfy customer needs but add value to the testing/equipment investment of its customers by ensuring the savings in their testing costs by supplying, servicing and supporting customer's competitively through-out the life-cycle of product/s with long-standing relationships.



Right to Left:
**Dr. Anil Kumar Kottani, Mr. Patel .M.G. and
 Mr. Basavaraju .K**



MINI-RANGE



MID-RANGE



WALKIN-RANGE



SPECIALISED-CHAMBERS



INDUSTRIAL -OVENS



INDUSTRIAL -CHILLERS

Everything You Need in Test Chamber

Envisys designs and manufactures various types of Environmental Test Chambers starting from smaller standard range of mini and mid-range of test chambers to large custom-built walk-in test chambers to meet the requirements of variety of testing applications.

Ability to customize the requirements is the forte of Envisys since its inception. Envisys is a venture for a global era by leveraging its technical strengths in design and manufacturing of environmental test chambers providing custom environmental testing solutions for electronics, automotive, defence, aerospace and various other industry applications.

Awards and Recognitions



Award winner for
 Excellence in
 Manufacturing Products



Award winner for
 outstanding supply
 and services



Award winner for
 Entrepreneurial
 Excellence



**ET-SERIES (Mid-Range)
ENVIRONMENTAL TEST
CHAMBERS**



ET-Series Environmental Test Chambers offering the best of unique and uncompromised features at competitive prices. Ideal for choosing your best suit for variable product sizes from the available range of standard sizes. High performance & inherent reliability guaranteed for continuous testing of your products. These chambers can be easily movable on the wheels to convenient places and are easy to maintain.

Uncompromised features included at no additional add-on costs...

Models:

Parameters	Specifications
ET150 - 40T/70T 40H/70H	550X400X700 MM - Work Space
ET300 - 40T/70T 40H/70H	650X600X800 MM - Work Space
ET600 - 40T/70T 40H/70H	800X850X900 MM - Work Space
ET950 - 40T/70T 40H/70H	1000X100X950 MM - Work Space
ET1400 - 40T/70T 40H/70H	1100X1350X950 MM - Work Space
ET3000 - 40T/70T 40H/70H	1300X1500X1500 MM - Work Space
Volume	150,300,600,950, 1400 & 3000 Litres
Temp	-40 / -70 to 180 °C
Relative Humidity	10 to 95% RH

Construction:

- ▶▶ Block construction with easy reach-in maintenance sections and user- friendly control desk
- ▶▶ Made of SS interiors and CRCS powder coated exterior panels
- ▶▶ Designed to meet variety of testing applications on diverse sizes of testing specimens

Control Console:

ET-touch controller is custom designed to work with Envisys's Environmental Testing chambers. The controller hardware is built with high performance industrial grade colour touch screen which allows the user to experience clear view of the chamber parameters. The software is designed for user friendly operation with highest level of safety and optimized chamber performance.

Optional/s:

- Single Set Point PID Controller
- Additional SS Tray
- Custom design with additional features as per customer requirements



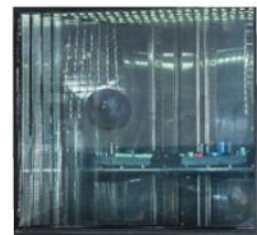
Stainless Steel Interiors



Heavy Duty Di-casted Hinges



Heavy Duty Castor Wheels



LED Illumination



Height Adjustable Tray Provision / Cable Dust



Door Mounted Programmer Control Panel



FLOOR MODEL



DESK MODEL



EM-SERIES (Mini-Range) ENVIRONMENTAL CHAMBERS



EM-series Mini Environmental Chambers offers flexibility, uniformity and control accuracy required for cost-effective testing. Ideal for testing smaller products such as electronic components, automotive component, these chambers combine superior performance with compact design that is perfect for small component testing. These chambers can be easily mounted on a laboratory bench top.

Space Saving & Cost Competitive...

Models:

Parameters	Specifications
EM22 - 30/65T	300 X 250 X 300 MM – Work Space
EM30 - 30/65T	300 X 350 X 300 MM – Work Space
EM64 - 30/65T/H	400 X 400 X 400 MM – Work Space
EM80 - 30/65T/H	400 X 500 X 400 MM – Work Space
Volume	22 Litres, 30 Litres, 64 Litres & 80 Litres
Temp	-30 / -65 to 120 °C
Relative Humidity	20 to 95% RH

Construction:

- ▶▶ Block construction with easy reach-in maintenance sections and user- friendly control desk
- ▶▶ Made of SS interiors and CRCS powder coated exterior panels
- ▶▶ Designed to meet space constraint laboratories

Control Console:

ET-touch color programmer

7" Resistive analog color screen configured with independent loops control (Temperature & RH) and features like communication ports (RS232/485) USB host ports. Extended memory upto 2GB Programming capability upto 99 programs, Realtime trend, On-demand auto tuning, Three level Security etc.,

OR

Microprocessor based PID controller with precise temperature and humidity control



Stainless Steel Interiors



Heavy Duty Di-casted Hinges



Heavy Duty Castor Wheels
Or MS Stand



LED Illumination

Optional/s:

- MS / Aluminium Frame Stand for Desktop Model
- Additional SS Tray
- Custom design with additional features as per customer requirements



Top Mounted Programmer/
Single Set Point Control Panel



EWS- SERIES
WALK-IN ENVIRONMENTAL
CHAMBERS



Pre - fabricated
 Double Door



Mono - Block
 Single Door



Mono - Block
 Double Door



Split - Type
 Single Door



Split - Type
 Double Door

Mono-block/Pre-fabricated design EWS-Series Walk-in Environmental Chambers with custom-built features to meet testing needs of large-sized test specimens

- Mono-block walk-in chambers are designed for high-temperature operations using high-grade materials
- Pre-fabricated panel structured walk-in chambers are designed for low and medium temperature operations
- Both Water-cooled and Air-cooled mechanical refrigeration system available with hermetic or semi-hermetic compressors for better efficiency
- Configured for temperature and relative humidity conditioning in the system ensuring high temperature accuracies, reliable test results
- Integrated/remote refrigeration compartments and control panel



Stainless Steel Interiors



Easily Accessible Control Panel

Conceptualizing your need for large test space into reality...

Models:

Parameters	Specifications
EWS10K - 35T/65T 35H/65H	2200X2200X2000 MM - Work Space
EWS12K - 35T/65T 35H/65H	2200X2200X2400 MM - Work Space
EWS14K - 35T/65T 35H/65H	2200X3100X2000 MM - Work Space
EWS16K - 35T/65T 35H/65H	2200X3100X2400 MM - Work Space
EWS18K - 35T/65T 35H/65H	2200X4100X2000 MM - Work Space
EWS22K - 35T/65T 35H/65H	2200 X4100X2400MM - Work Space
Volume	10000,12000,14000, 16000, 18000 & 22000 Litres
Temp	-35 / -65 to 90 °C /150 °C
Relative Humidity	10 to 95% RH



Single / Double Door/s With Toughened Glass Inspection Window



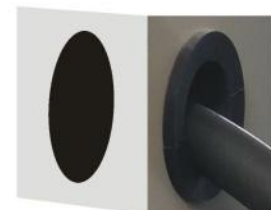
Heavy Duty Fixed Metallic Legs For Modular Designed Walk-in's

Control Console:

ET-touch color programmer

7" Resistive analog color screen configured with independent loops control (Temperature & RH) and features like communication ports (RS232/485) USB host ports. Extended memory upto 2GB Programming capability upto 99 programs, Realtime trend, On-demand auto tuning, Three level Security etc.,

Built-in web server which allows remote monitoring and operation of your test chamber from any internet connected PC or Smart Phone



Cable Duct With Port-Plug

Optional/s:

- Remote Control Consoles
- Height adjustable specimen racks
- Cable ports



Multi-Point Locking




ETS-SERIES
THERMAL SHOCK CHAMBERS

ETS-Series air-to-air and liquid-to-liquid Thermal Shock Chambers from Envisys are available in different volumes to suit the varied testing needs. Horizontal or vertical models consisting of cold and hot zones with product carrier basket of sizes 50, 100, 150, 300, 600 and 900 litres which transfers the specimen under test between cold and hot zones using electro pneumatic / motorized basket movement.

Environmental Stress Screening Tests using Envisys Thermal Shock Chambers ...

Models:

Parameters	Specifications
ETS - 50	500 X 350 X 300 MM
ETS - 100	500 X 500 X 400 MM
ETS - 150	600 X 500 X 500 MM
ETS - 300	800 X 750 X 500 MM
ETS - 600	900 X 900 X 750 MM
ETS - 900	1000 X 1000 X 900 MM
Volume	50,100,150,300,600 & 900 Litres
Temp	-70 to 200°C
Basket Transition Time	< 10 Secs

Construction:

- ▶ Mono-Block construction with easy reach-in maintenance sections and user- friendly control desk
- ▶ Designed to meet variety of testing applications on diverse sizes of testing specimens
- ▶ Made of SS interiors and CRCS Powder coated exterior panels

Control Console:

ET- touch color programmer
 7" Resistive analog color screen configured with independent loops control (Temperature & RH) and features like communication ports (RS232/485) USB host ports. Extended memory upto 2GB Programming capability upto 99 programs, Realtime trend, On-demand auto tuning, Three level Security etc.,

Features:

- LED illuminated work-space with multi-pane vaccumized glass view window (on the hot zone)
- High grade SS interiors & CRCS powder coated outer panels with durable SS basket with tray slots
- Silicone rubber double layered sealing and heavy duty di-casted aluminium locks and hinges
- Vertical/horizontal basket changeover using electro-pneumatic / motorized mechanism
- Easy access door handle cum HMI mount-front access operating monitor



Stainless Steel Interiors



View Window With LED Illumination



Aluminium Di-Casted Door-Locks



Electro-Pneumatic/
Motorized Basket Movement



SS Specimen Carrying Test Basket



Single-Line Silicone Gasket



EBS/ECS-SERIES SALT SPRAY CHAMBERS



Basic Version-Mid Range



Cyclic Version – Mid Range



Mini-Salt Spray-Closed



Mini-Salt Spray-Opened

EBS/ECS Series Salt Spray Chambers (Basic & Cyclic) are manufactured by Envisys in different versions to meet the variety of testing applications as per international standards viz., ASTM DIN GM JIS MIL etc...

Corrosive Resistance Testing of Your Products...

Models:

EBS/ECS-Series Mid-Range Salt Spray Chambers	
Parameters	Specifications
EBS/ECS 300	850X550X650 MM -Work Space
EBS/ECS 600	900X800X850 MM -Work Space
EBS/ECS 900	1350 X800X850MMM -Work Space
EBS/ECS 1500	1500X1000X1000MM -Work Space
Volume	300, 600, 900 & 1500 Litres
Temp	Ambient to 50°C
Relative Humidity	Optional
EMS-Series-Mini-Salt Spray Chamber	
EMS-100	600x500x400 MM – Work Space

Construction:

High corrosive resistant non-metallic glass-fibre reinforced structure

Optional Control Consoles:

Single set point microprocessor based PID controller for salt spray and saturation temperature control

Touch screen based complete user-programmable console capable of controlling chamber & saturator temperature, perform cyclic operations

OPTIONAL ACCESSORIES FOR ECS MODELS

- ECS-01 Optional Accessory for Renault D17 2028 (ECC-1)
- ECS-02 Remote Refrigeration Unit RRU/A1, RRU/A2
- ECS-03 Spray Header Cycle (Vertical down)
- ECS-04 Immersion Test Cycle
- ECS-05 Wall Wash
- ECS-06 SO2 Gas Dozing
- ECS-07 De-Humidifier Unit
- ECS-08 Multi-Solution Salt Spray
- ECS-09 Controlled Humidity Cycle
- ECS-10 Drain Treatment Unit



Atomizer



Saturator/Bubble Tower



Tape Heaters



Brine-Solution Tank



Hot Air Blower



Internal Spray Cabinet



ER-SERIES
RAIN CHAMBERS



IPX1-IPX2



IPX3-IPX4



IPX5-IPX6 IPX6-IPX7



IPX9K



JSS 5555/IS9000



JIS D 0203

ER-Series Rain Chambers are designed and manufactured to meet IP tests viz., IP Test (X1 to X8) IP Test (X4K, X6K & X9K) in different possible configurations ER-Series Rain Chambers are also built according to various other international standards viz., BIS, JIS, IEC-60529, EN, DIN, JSS-55555, MIL etc.,

Determining your product susceptibility to liquid ingress...

Features:

- ▶▶ Designed to meet Ingress Protection Standards
- ▶▶ Built to the requirement from component level testing, room level testing to field testing of large sized products
- ▶▶ High quality corrosive resistance material for construction
- ▶▶ Drip-tank designed and manufactured to meet the desired fall-rate as per standards
- ▶▶ Spray and Jet nozzles are manufactured in single operation CNC with high dimensional accuracies
- ▶▶ Highly reliable water circulation pump and pipeline
- ▶▶ Vibration-free rotating table with variable speed control
- ▶▶ Viewing glass door with wiper

Variety-I

- Pre-set programmable timer
- Each sub-system with independent selection switch
- Single-set point microprocessor based PID controller for IPX9K
- Digital RPM indicator and sensor to read table RPM
- Analog pressure gauge and flow-meter for water pressure and flow monitoring
- Manual operated by-pass valves to set required flow and pressure

Variety-II

- Touch screen based complete user-programmable console capable of controlling and monitoring rain test parameters viz., pressure, flow-rate, set duration etc.,



IPX9K



IPX1-IPX4 JIS D0203



IPX3-IPX4 IPX9K JIS D0203 JSS 55555



IPX1- IPX2

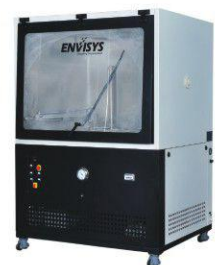


IPX5- IPX6 IPX9K JIS D203

IPX3- IPX4

IPX1- IPX2

IPX1- IPX2 & IPX3 - IPX4



EDC-SERIES
DUST CHAMBERS

EDC-Series Chambers are designed to simulate most aggressive dust filled environments as per various international standards to meet the dust test application of electronics, automotive and other components...

Dust Testing... Determining the Ingress Protection...

MODELS	EDC-1000	EDC-1500	EDC-3375
Working Volume	1000 Litres	1500 Litres	3375 Litres
Working Dimensions	1000 x 1000 x 1000 mm	1500 x 1000 x 1000 mm	1500 x 1500 x 1500 mm

Performance

STANDARDS OF COMPLIANCE AND SCOPE

IEC – 60529
 IEC-68-2-68
 DIN 40050 Part 9
 DIN/VDE 470
 DIN EN 60068-2-68
 SAE J575
 MIL
 JSS
 JIS etc.,

Note: Single system doesn't comply with all standards. The test systems are manufactured as per user specified or required standards

- ▶▶ Free-flow dust circulation centrifugal blower
- ▶▶ Uniform floating dust simulation across the test space
- ▶▶ Dust pre-heating mechanism for free flow of the dust
- ▶▶ Hopper re-vibration for free fall of settled dust
- ▶▶ Blower speed regulation to ensure metered uniform dust floating inside the test space
- ▶▶ Oil-free vacuum pump to simulate negative pressure for IP6X test
- ▶▶ Volumetric air-flow meter/counter for IP6X test
- ▶▶ View window with wiper
- ▶▶ User-friendly Multi-function programmable timer

CONTROL CONSOLES

User-friendly touch control/Multi-function programmable timer
 Cycling dust test programmable capability
 Blower speed regulation to ensure metered uniform dust



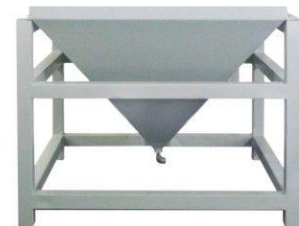
Vacuum System



Vacuum Flow-Meter and Regulation



Dust Circulation System



Dust Agitation -JIS



Agitation Blades



Single Set Point / Programmable Controls



EA-SERIES
ALTITUDE CHAMBERS

Combined Altitude Temperature and Humidity (CATH) Chambers

CATH (Combined Altitude Temperature and Humidity) Chambers are designed for simulating the actual aerospace conditions for testing aerospace / automotive components at high altitude thermal conditions.

Simulation of actual conditions of aerospace testing...

Models:

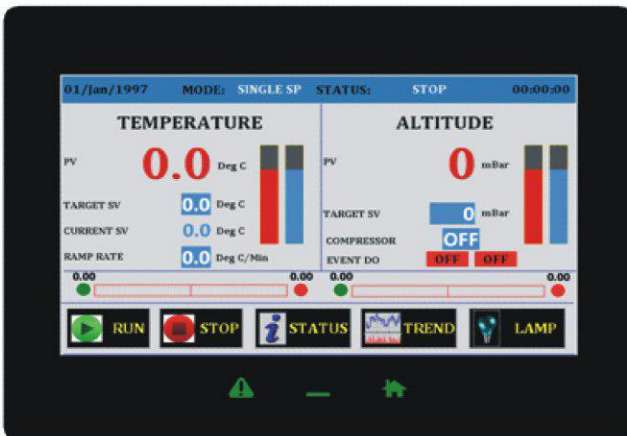
Available Range	600, 950 and 1400 Litres
Models: EA600 - 40T/70T 40H/70H EA950 - 40T/70T 40H/70H EA1400 - 40T/70T 40H/70H	Work-Space Dimensions 800X850X900 MM 1000X100X950 MM 1100X1350X950 MM
Temperature	-40/-70°C to 180°C
RH	10% to 95% (optional)
Altitude	Up to 10 m bar

Construction :

Mono-block construction with easy reach-in maintenance sections and user-friendly control desk.

Control Console :

ET-color touch programmer with built in web server for monitoring and operating from any internet connected PC or smartphone



RS-232, RS-485, USB, Ethernet and USB host port

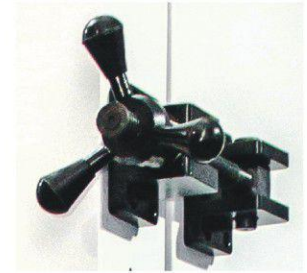
Built-in web server which allows remote monitoring and operation of your test chamber from any internet connected PC or Smart Phone

Additional Features:

- Robust Door Locking
- Feed Thro Connectors
- Adjustable Door Hinges



10mm Thick SS Interiors



Door Locking Mechanism



Electrical Feed-Thro Connectors



Humidity Butterfly Valve



Vacuum Tight D-Type Silicone Rubber Sealing



Direct Coupled Multi-Vane Rotary Vacuum Pump

ETV-SERIES VIBRATION CHAMBERS

Environmental Chamber with Vibration Shaker Interface provision consists of Environmental Test Chamber, Vibration Shaker Interface Provision, HMI/PC PLC based Control System etc.,

This chamber is designed with unique features to meet the control parameters like Temperature, Humidity (optional) and 3 Axis Vibration Controls as per customer specified requirements.



Combined tests made easy...

Construction:

Bottom of the chamber will have specially designed interchangeable hood with interface mechanism to couple the shaker and chamber during combined tests.

Chamber will be moved up and down vertically through friction-free guided U channel and wheel

Chamber will be moved horizontally manually using heavy duty castor wheel with railing

Models:

Parameters	Specifications
ETV150 - 40T/70T 40H/70H	550X400X700 MM
ETV300 - 40T/70T 40H/70H	650X600X800 MM
ETV600 - 40T/70T 40H/70H	800X850X900 MM
ETV950 - 40T/70T 40H/70H	1000X100X950 MM
ETV1400-40T/70T 40H/70H	1100X1350X950 MM
Volume	150,300,600,950&1400 Litres
Temp	-40/-70 to 180°C
Relative Humidity	10 to 95% RH



ESC-SERIES SUB-ZERO CHAMBERS

Strip-Cooled Deep Freezer for Sub-Zero Treatment of Razor Blades. Deep Freezer for Razor Blades designed for sub-zero process of razor blades coming out of furnace. It works on conduction principle of heat transfer method to cool the heated-strip-by-sub-zero-process



AVAILABLE IN 2 OR 4 STRIPS

CHARACTERISTICS	DESCRIPTION
Temperature Limits	Ambient to - 80°C
No of Strip pass	2/4 Numbers
Strip slot dimensions	50 x 15 MM
Strip slot to slot	12 MM
Ground to strip pass height	700 MM
Max Speed	70 feet /min
Suitable for	Thickness 0.4mm and width max 15mm

Freezing the Razor Blades...



Control Console :



Two numbers of single set point digital temperature PID controllers One controller for temperature controlling and another for comparison

Conditioning Section:



Condition section is made of solid block aluminium heat exchanger via conduction method.

Brass sheets 2 or 4 numbers of 50x15mm slots will be provided for passing the strips.

Freezing the Automotive Components...

Vertical Sub-Zero Chambers for heat treatment applications of automotive components.

Models	Cooling Capacity
ESC 140 - 80 - 1 - T	25kg/hr
ESC 280 - 80 - 1.5 - T	95kg/hr
ESC 600 - 80 - 6 - T	125kg/hr
ESC 990 - 80 - 7.5 - T	250kg/hr
ESC 1700 - 80 - 7.5 - F	225kg/hr
ESC 2500 - 80 - 10 - F	300kg/hr
Volume	140,280,600,990,1700 & 2500 Litres
Temp	Ambient to -80°C



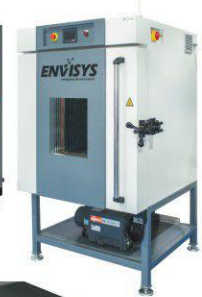
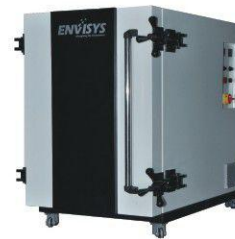
EO-SERIES

INDUSTRIAL OVENS / DRYERS

Curing, Heat Process, Ageing, Annealing etc., Solutions...

Standard Oven with and Without View Windows

Standard Ovens are manufactured in different sizes Viz., 150, 300, 600,950 and 1400 Litres volumes for high temperature simulation up to 250°C for curing, drying, ageing, annealing or any heat processing tests at higher temperatures Envisys has the oven to meet your needs.



Vacuum Oven

Vacuum, Ovens are manufactured in different sizes Viz., 150, 300, 600,950 and 1400 Litres volumes for high temperature simulation up to 250°C and Vacuum up to 1 m bar

Walk-in Burn-in Chambers

Walk-in Burn-in Chambers are designed and manufactured as per the customer requirements is single block or pre-fabricated structure for high temperature simulations meeting the variety of applications



Industrial Dryers

Designed for Pharmaceuticals & Chemicals, Food, Textiles and other industries. Triple walled in construction for close loop circulation. Available in various capacities of drying. Custom-built to various drying needs



STANDARD RANGE	Models	No of Trays	Inner Size	Outer Size	Heater Load	Door	Trolley
	ETD12 -150T	12	840 X 460 X 920 MM	1375 x 660 x 1375 MM	6 KW	1	-
	ETD24 -150T	24	840 X 920 X 920 MM	1930 x 1220 x 1375 MM	12 KW	1	1
	ETD48 -150T	48	1020 X 920 X 1830 MM	2035 x 1220 x 2185 MM	18 KW	1	1
	ETD96 -150T	96	2040 X 920 X 1830 MM	3560 x 1220 x 2185 MM	30 KW	2	2
	ETD192-150T	192	2040 X 1830 X 1830 MM	3560 x 2080 x 2185 MM	54 KW	2	4

ETC-SERIES INDUSTRIAL CHILLERS

ETC-Series air-cooled water chillers designed for industrial application of various industries. Built to operate in stringent ambient conditions with continuous duty applications

Chilling Solutions from Envisys ...

Features :

Eco-friendly Chillers with Compact Design

High flow-rate Low pressure-drop evaporator

High-efficiency refrigeration compressor

Consistent outlet water temperature

Built for operating in stringent ambient

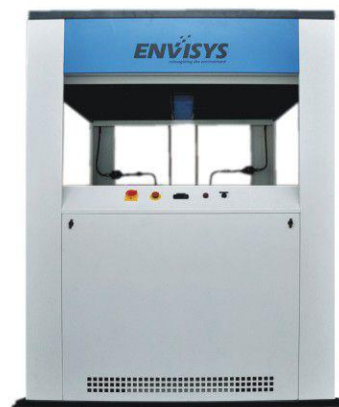
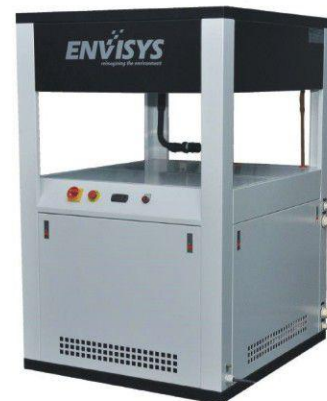
Accurate control and measurement system

Construction Features :

- ▶▶ Eco-friendly refrigerant
- ▶▶ Hermetic scroll/reciprocating compressors
- ▶▶ Finned coil condenser with copper tubes and aluminium fins
- ▶▶ Axial fans di-casted with aluminium and crescent shaped blades
- ▶▶ BPHE for evaporation
- ▶▶ Storage tank with filling/drain valves, pump and pressure gauge
- ▶▶ Level sensors
- ▶▶ Low/High refrigerant pressure switches
- ▶▶ Pressure gauges
- ▶▶ Phase monitor against phase loss, phase reversal
- ▶▶ Compressor crankcase heater



Single set point Digital Temperature controller will be provided with sensor to control the water temperature in the tank during re-circulation



ETF-SERIES

TEMPERATURE FORCING SYSTEMS

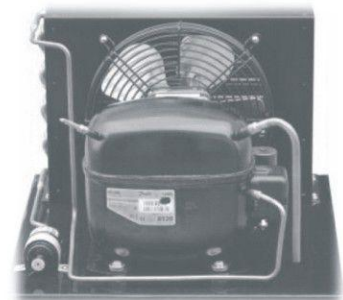
A micro cooling unit designed to simulate the various working temperature conditions on the electronic chip boards.

Features:

- ▶ Precise Temperature Accuracies with Reliable Test Results
- ▶ Temperature Limits: -40/-60°C to 30°C
- ▶ Temperature Accuracies: $\pm 2-3^{\circ}\text{C}$
- ▶ Temperature Rate of Change: 20-25 deg /min (Non-linear)
- ▶ Maintenance Free Access to The System
- ▶ Self-Sufficient System
- ▶ Compact with small footprints suitable for any space constraint laboratories
- ▶ Low decibel system
- ▶ Suitable for testing electronic chips / devices
- ▶ Environmentally friendly refrigerants
- ▶ Efficient heating
- ▶ Microprocessor based single set point PID temperature controller with data logging
- ▶ Flexible hose up to 2.5-3.0m
- ▶ Interchangeable heads according to chip size.
- ▶ Inbuilt electrical control panel with switchgear system



Traditionally applied in
Semi-conductor, PCB,
Electronic Sub- Assembly
Testing...



Control Console:

Hot and Cold temperature control system with either Single Set Point or Dual Loop controllers of Autonics make as per customer choice and preference Microprocessor based PID controller with precise temperature control Heating will be controlled through zero-crossing relay control system



EWS-SERIES

SOLAR PANEL / PV MODULE TEST CHAMBERS

EWS-Series Environmental Test Chambers for Solar Panels and PV Modules testing with uncompromised features at competitive prices. Ideal for choosing your best suit for variable sizes of Solar Panels and PV Modules from the available range of standard and Custom-Built Chambers. High performance & inherent reliability guaranteed for continuous testing of your products



Thermal Cycle, HF and Damp Heat...

Standards The standard table indicates the sample test procedures of solar panels/PV module testing according to the most recognized standards. Envisys can design and manufacture chambers according to the customer needs on specified standards, sizes of panels, ramp rate or if the customer wishes to have independent chamber for damp heat cycle, Envisys can provide the same to meet customer demand for testing the panels.

IEC 61215

IEC 61646

IEC 61730

IEC 62108

UL 1703

ASTM E1171

CONTROL CONSOLE

Color Touch Screen Controller is built around high-performance core hardware with integrated functionality. Touch screen controller is constructed with Cast Aluminium IP 66 protected enclosure for front screen with many added features viz., Dual USB host port, on board 256MB non-volatile flash memory and extended external memory up to 2 GB.



ETU-SERIES ENVIRONMENTAL CHAMBERS FOR UTM INTERFACE

ETU-Series Environmental Test Chamber for conducting environmental tests at elevated and freezing temperatures in order to perform integrated tests for hot & cold conditions on universal testing machines.

Thermal Chambers from Envisys for Interfacing with any UTM's...

Temperature-Relative Humidity-Salt Fog Integrated Test Apparatus for UTM Interface is designed to meet the specific test requirement of integration test, for this application, test enclosure is designed for the rig interface in split units, for this from the RC (Remote conditioning) unit purge the conditioning air to test enclosure



TEMPERATURE - RH - SALT FOG
INTEGRATED TEST EQUIPMENT
FOR UTM INTERFACE

SPECIALIZED FEATURES OF UTM INTERFACE CHAMBERS:

- ▶▶ Designed in custom sizes as per the requirements.
- ▶▶ Temperature range +/-30 / +/-65 to 80 °C and 20% to 95% RH.
- ▶▶ LN2 cooling optional
- ▶▶ Control features are optional.



Custom designed UTM Chambers
designed in different sizes as per the
requirement



UTM Miniature Chambers



Top and Bottom of the chamber
for interfacing with UTM interfacing
slots and cover

ET-SERIES BATTERY TEST CHAMBERS

Envisys - Environmental Chambers for Battery Testing are designed and manufactured to meet various types of battery testing requirements of its customers by keeping all safety options in mind against any harmful explosions or ignitions and user safety while testing these batteries for environmental stress conditions

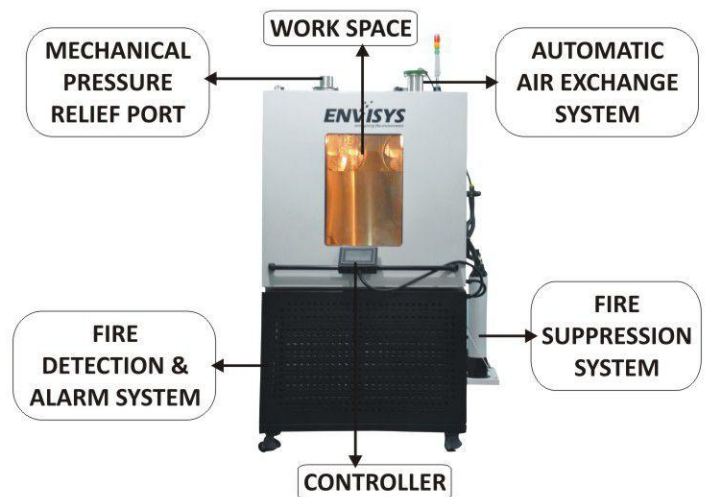
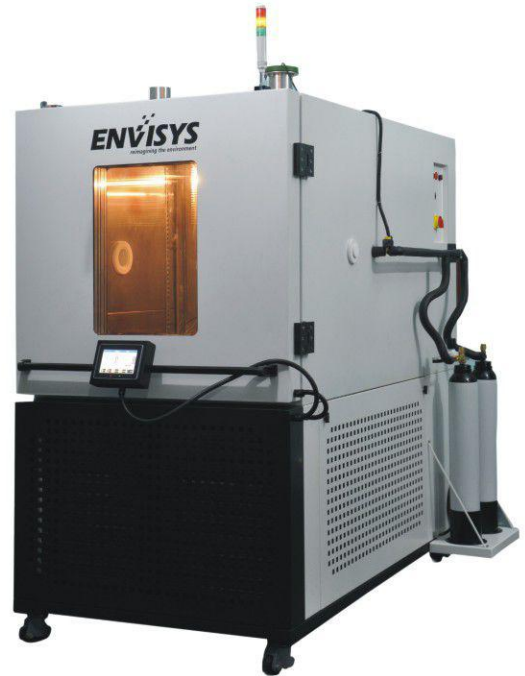
Available Range	600, 950 and 1400 Litres
Temperature	-40/-70°C to 180 °C
RH	10% to 95% (optional)

Safe Testing of Batteries Against Environmental Stresses...

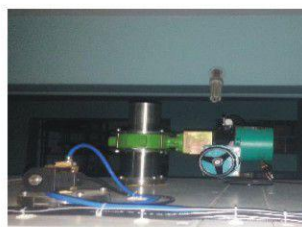
These Chambers are designed and manufactured to meet various types of battery testing requirements of its customers by keeping all safety options in mind against any harmful explosions or ignitions and user safety while testing these batteries for environmental stress conditions.

Safety Features :

- ▶▶ Fire Suppression System (Co2).
- ▶▶ Automatic Air Exchange System.
- ▶▶ Mechanical Locking & Fire Extinguisher System.
- ▶▶ Mechanical Pressure Relief Port.
- ▶▶ Fire Detection/Alarm System (O2 & CO)
- ▶▶ Status Indication & Smoke Detection.



Fire Suppression System (CO2)



Automatic Air Exchange System



Fire Detection Alarm System



Mechanical Pressure Relief Port



Status Indication and Smoke Detection

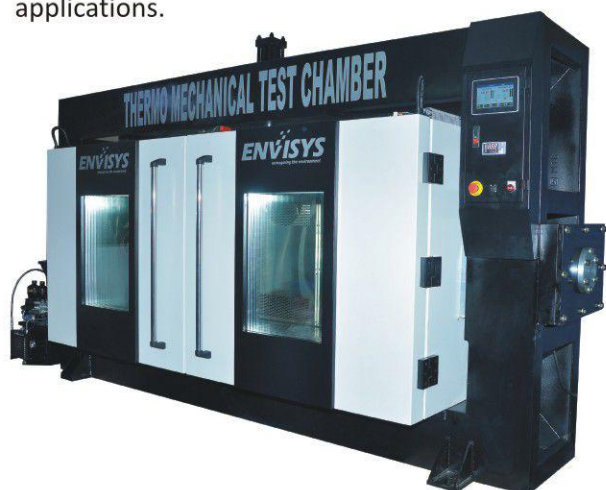


Low Explosive Limit Detector & Fire Extinguisher System



CUSTOM – BUILT TEST SYSTEMS

Ability to customize the requirements is the forte of Envisys since its inception. Envisys is a venture for a global era by leveraging its technical strengths in design and manufacturing of environmental test chambers providing custom environmental testing solutions for electronics, automotive, defence, aerospace and various other industry applications.



Thermo Mechanical Test Chamber

Consisting of self-standing thermal chamber with in-built air-cooled refrigeration system and control panel integrated with mechanical structure, hydraulic power pack and cylinder for testing electrical insulators for tensile and cantilever tests as per standards.



Drive-in Test Chamber

Walk-in Environmental Test Chamber for vehicle level testing of two-wheeler vehicles for temperature and humidity parameters as per automotive standards with side view-thro's of entire vehicle during testing.



Drop-Test Machine

Drop-Test Machine from Envisys designed to meet customized drop-test requirements. Automated or semi-automated designs are available with adjustable drop height range 400-1500 mm with load bearing capacity up to 10 kgs and more. Motorized adjustment of height using gear motor for quick and easy operation



CUSTOM – BUILT TEST SYSTEMS



Environmental Test Chamber for Steering Boots Endurance Testing

Environmental Test Chamber integrated with three axes actuator mechanical test rig for combined tests of steering boots endurance testing application



Walk-in Salt Spray Chamber

Walk-in Salt Fog Chamber from Envisys with spacious work-spaces built at site using pre-fabricated corrosive resistant materials for simulating salt-fog conditions as per various standards for testing larger samples



Vacuum De-gassing Chamber

Vacuum Degassing (outgassing) Chamber to perform degassing (outgassing) procedures to reduce outgassing from materials. The system is operated in the condition of temperature range of 50 to 120°C and low pressure of 1×10^{-6} Torr



CUSTOM – BUILT TEST SYSTEMS



Oil Circulating Oven

Oil Circulating Ovens from Envisys custom designed to meet the flame-proof testing of chemical explosives with indirect heating using thermo-fluids as heating media. The system is designed with remote control units for testing the explosives as per standards



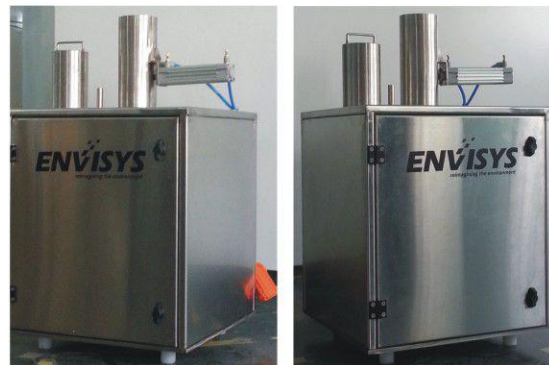
Environmental Test Chamber for skid mounted door fixing provision to test P4 speed sensors

Environmental Test Chamber with skid mounted door fixing provision with servo motor integration to rotate the internal disc of 4000 rpm to test P4 speed sensors used in various defence applications which will have the provisions of gap and angle adjustment for testing the sensors at rated speed with different angle and gaps.



Railway Sleeper Test Chamber with Load Test Bench

Customized 500 kN hydraulic load test bench with integrated -60 °C to + 60 °C environmental test chamber for testing full and half railway sleepers with various load and environmental conditions.



Impact Test Set Up

Impact Test Set-Up from Envisys is designed to simulate mechanical abuse of cells and batteries from an impact that can result in internal short circuit.



CUSTOM – BUILT TEST SYSTEMS



Custom Rain Simulation Chamber

Custom Rain Simulation Chamber designed by Envisys for simulating the different rain patterns and IR

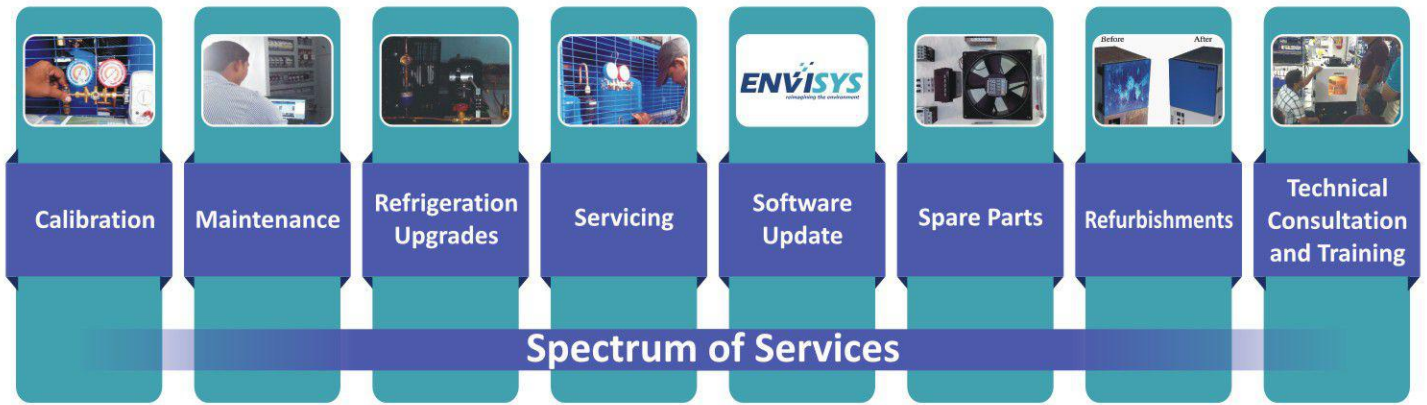
Electric Cycler – Climatic Chamber

Electric Cycler Climatic Chamber from Envisys is custom designed to meet the testing of automotive mirrors during automatic folding and unfolding of mirrors in actual conditions



Air/N2 Cooled Cylinder Cooling Chamber

Custom designed air/N2 cooled chamber for cooling the cylinders up to -25 deg C with automatic push-pull conveyor with limit switch interlocks and pneumatic vertical door opening provisions.



RE FURBISHMENTS

Envisys undertakes the refurbishment of old Environmental Test Chambers/ Systems to refurbish as per latest technology to make them new for re-use

Committed to Serve Our Customers

We at Envisys are committed to provide all the products and services mentioned in our profile with great quality and utmost dedication towards our work

Give us a call or shoot us an e-mail to know how we can help you.



REPAIR SERVICES

Envisys provides service to all kinds of Environmental Test Chambers. The breakdown test chambers will be inspected and repaired to working condition.

OUR CUSTOMER HELP DESK



Land-Phone: +91 80 28377888

Hand-Phone: +91 7353599800



MAINTENANCE CONTRACTS

Envisys offers maintenance contracts to all types of Test Chambers to completely eliminate down-time costs of testing systems. Preventive or Comprehensive maintenance contracts can be availed.



RENTALS

Envisys provides the rentals of selected range of Environmental Test Chambers on monthly/daily rental basis. Rental services are limited to India only.

OTHER SERVICES

CALIBRATION



Envisys provides the calibration services through an NABL accredited laboratory for limited range of its products.

TECHNICAL CONSULTATION



Envisys technical team is available online round the clock to give consultation to its customers on operation or trouble-shooting of its test chambers

REFRIGERATION UPGRADES



Refrigeration upgrades are offered by Envisys for incorporating the latest technology to reduce electricity, emission and operating costs of its customers

SPARE PARTS



Envisys also supplies the spare parts for range of environmental test chambers manufactured by Envisys available in stock at the facilities of Envisys

SOFTWARE UPGRADES



Software upgrades for the controllers are done periodically as and when necessary for enhancement of new features and functionalities.

TRAINING



Team of professionals from Envisys conducts periodic trainings on latest technologies and trends in the environmental testing to build awareness level among its users.

OUR CUSTOMERS TO NAME A FEW



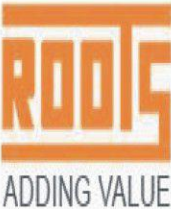
Mercedes-Benz



ON Semiconductor®



TITAN COMPANY



ADDING VALUE



ATHER



ZF STEERING GEAR (INDIA) LIMITED



Acoustics Drywalls Ceilings Panelling



KNORR-BREMSE



INSPIRED TO INNOVATE



Motorsion Automotive Technologies & Engineering



Security at Fingertips



Making our planet more productive



Challenging Excellence



HYUNDAI



TATA POWER SED



TÜVRheinland®



Make things Reliable



imagination at work



EVERYDAY SOLUTIONS



OUR CUSTOMERS TO NAME A FEW



In Envisys it's the PEOPLE, PROCESS & TECHNOLOGY that matters in building a quality system of high reliability in environmental simulation systems. It's the competency in design, expertise and experience that differentiates the products of Envisys from competitors





ISO 9001-2015 CERTIFIED COMPANY



ENVISYS TECHNOLOGIES PVT LTD

#SB-118, 3rd Cross Road,
I-Stage, Peenya Industrial Estate,
Bengaluru – Karnataka – INDIA
Land Phone: +91 80 28377888
Fax: +91 80 28372927
Hand-Phone: +91 7411455246

