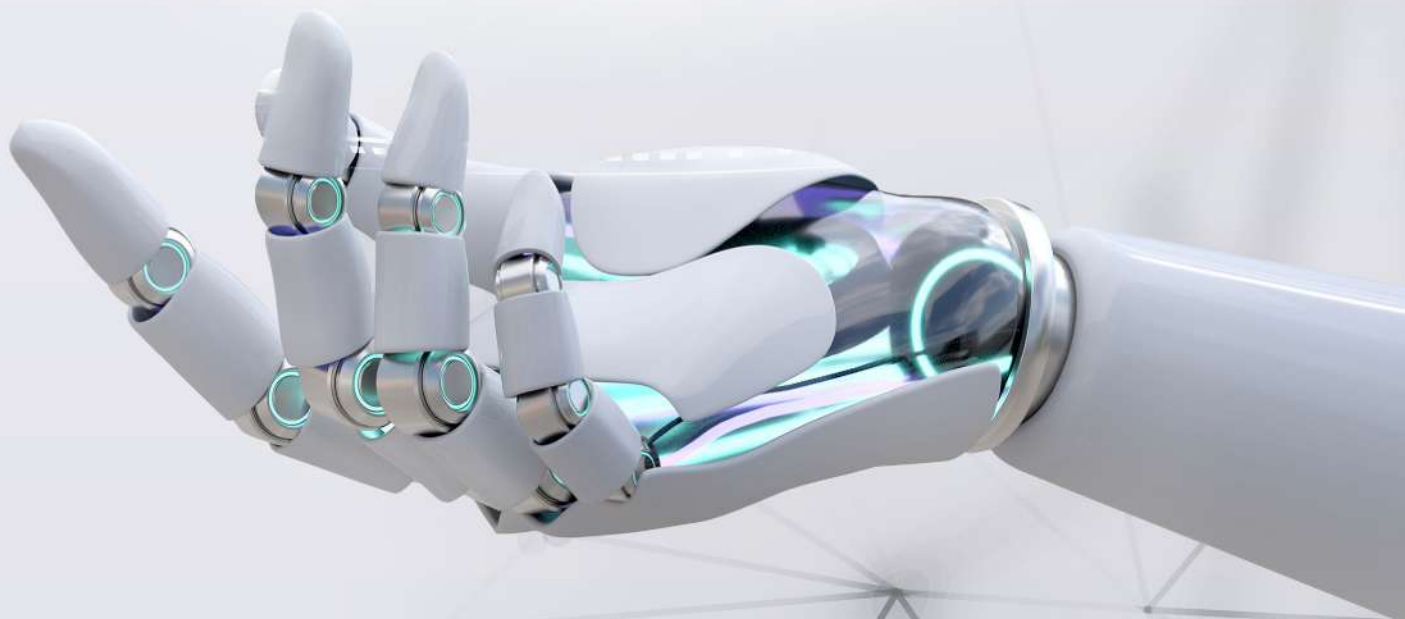
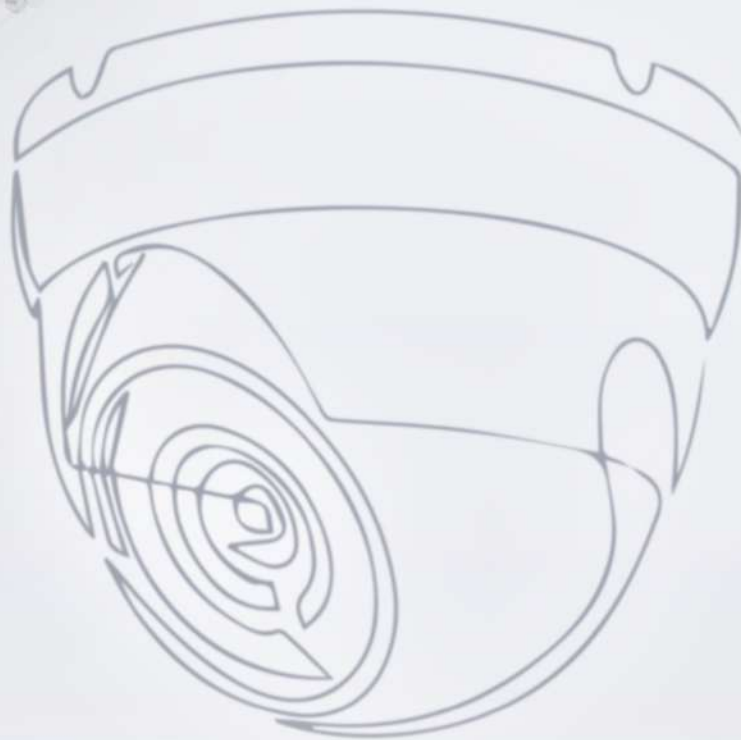




TECHNO SUPPORT[®]
Securing the Future



Manufacturers of
CCTV Camera, LED TV, Computer,
Laptop & IT Products

OUR JOURNEY

Since 2018, Techno Support has evolved from computer repair to a dynamic electronics company. We now offer a wide range of tech solutions, including cutting-edge CCTV systems and high-quality electronic accessories. Our journey is marked by innovation & customer satisfaction, & we're committed to empowering individuals and businesses with dependable technology.

TECH SOLUTIONS

A Multifaceted Tech Company Revolutionizing the Industry.

2023

ONE MORE MILESTONE

Techno Support's Milestone Expansion into CCTV Manufacturing in Vijayapura.

2022

TECHNO SUPPORT'S INNOVATION

Techno Support's Bold Venture into CCTV Manufacturing & Security Solutions.

2021

DIVERSIFICATION & TRUST

Techno Support's Tech Market Dominance by 2020

2020

EXPANDING HORIZONS

Techno Support's 2019 Venture into Computer and Laptop Resale

2019

EMBARKING ON EXCELLENCE

Techno Support's 2018 Journey to Recognized Quality Service & Customer Satisfaction.

2018



Mr. Praveen Karne

CEO & Founder

Meet Mr. Praveen S. Karne, the dynamic CEO and founder of Techno Support, a forward-thinking young entrepreneur with a bold vision. Dedicated to making India technologically independent, his admirable courage and entrepreneurial spirit shine through, demonstrating a remarkable commitment to achieve this goal at a young age.



ONKAR SWAMI
President, CFO



NAVEEN SUTAGUNDI
Vice President, CMO



PARINITA BHOSALE
HR Director, R & D Head



VISHAL BOMALE
Brand Creative Director



SUDHEER KOTYALKAR
Quality manager



SHRINIVAS S. SWAMI
Production head



ROHIT HIREMATH
Sales manager



RAHUL S. KARNE
VFS & Software developer

PURPOSE OF PROJECT



Providing top-notch products and services at affordable prices enhances accessibility, bridging gaps for a broader customer base, especially benefitting low-income or underserved populations.



The project aims to drive progress by making cutting-edge technology accessible and promoting innovation in manufacturing, leading to improved products, services, and technologies for the benefit of society.



IMPROVING CUSTOMER SATISFACTION

Providing high-quality goods, efficient services, and superior vendors can all help improve customer satisfaction. Satisfied customers are more likely to return to the company and recommend it to others, leading to increased sales and business growth.



BUILDING A COMPETITIVE ADVANTAGE

By offering low-priced goods and services, the project can gain a competitive advantage in the marketplace. This can help the company attract more customers and increase market share, leading to greater profitability and long-term success.



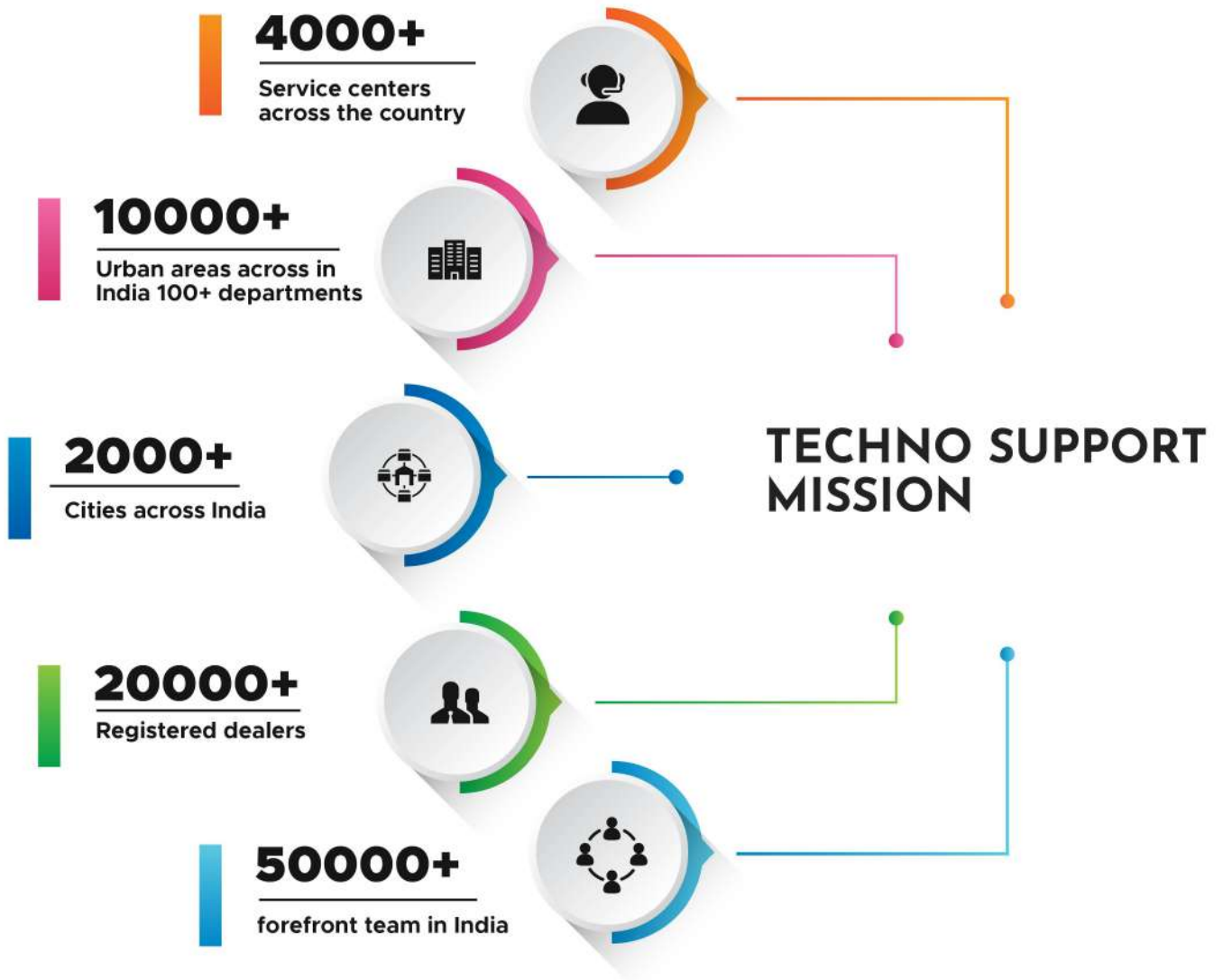
FOSTERING SUSTAINABILITY

The project strives for sustainability through eco-friendly manufacturing, responsible sourcing, and waste reduction. This not only minimizes its environmental impact but also appeals to customers valuing sustainability.



SUPPORTING ECONOMIC DEVELOPMENT

By offering affordable products and services, the project can support economic development in various regions. This can help create jobs, increase income, and promote growth and development in local communities.



ONE MILESTONE AT A TIME

EMPLOYMENT

Fostering empowerment and independence in India through our comprehensive security solutions. Join us in promoting self-employment and a secure future for all.

QUALITY

Delivering unparalleled quality in industrial products without compromising your budget. Experience top-notch security solutions at affordable prices for a safer and smarter future.

TECHNOLOGIES

Elevating security standards nationwide by championing premium technologies. Our commitment extends beyond products – we support a safer and technologically advanced tomorrow for all.

SUPPORTING

Embracing the 'Vocal for Local' ethos, we proudly support and integrate locally sourced technologies. Join us in fortifying our communities with security solutions that empower and uplift.



**For your home,
office and properties**

REALTIME SECURITY SYSTEM PROTECTION

BUY TODAY



ROAD SAFETY ELEVATED!

**Our CCTV Cameras
Keep an Eye on the Road.**

IP DOME CAMERA

We can meet your security needs in different scenarios. Our IP cameras renders high-quality images even in low illumination environment while featuring smart functions based on video content analytics, and minimizing bandwidth and storage. The most important business value of them is to provide excellent performance at an affordable price.

IS 13252
(PART 1): 2010
IEC 60950-1: 2005



R-81003000



4K IMAGE QUALITY

4K surveillance is the latest offering in the world of HD video surveillance cameras.

AI FEATURE SUPPORTED

AI for video surveillance utilizes computer software programs that analyze the audio and images from video surveillance cameras in order to recognize humans, vehicles, objects, attributes, and events.



THERMAL HEAT DESIPATION

This heat sink, transfers heat by conduction from a Microprocessor to a specially constructed metal plate which is directly connected heat shrink.

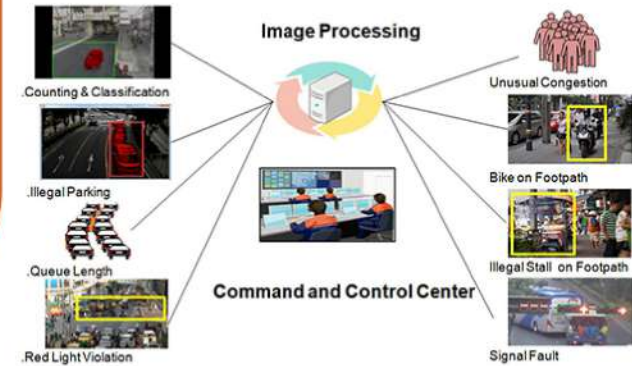
WDR

Our camera lens uses different shutter speeds to allow more light in some areas of the image. So as the conditions of light it automatically adjust the aperture rate with TS optimized software.



SMART IMAGE PROCESSING

A smart image processing CCTV camera device capable of performing digital image processing and also motion image analysis and tracking upon a captured image by itself to monitor and obtain a clear image.



FEATURES

- Dome Fiber Body, Built-In Mic Support
- 5mp 4k Ip Network Camera Onvif
- Lens Fixed: 2.8mm(20mtr) 3.6mm(30mtr) / 6mm(50mtr)
- Night Vision: Ir Black&with(25mtr) / Colour Warm(15mtr)
- DWDR, 3DNR, Defog, ROI, UpnP - TM
- Supports triple stream





IP BULLET CAMERA

ONVIF
Member

We can meet your security needs in different scenarios. Our IP cameras renders high-quality images even in low illumination environment while featuring smart functions based on video content analytics, and minimizing bandwidth and storage. The most important business value of them is to provide excellent performance at an affordable price.



IS 13252
(PART 1): 2010
IEC 60950-1: 2005



R-81003000



4K IMAGE QUALITY

4K surveillance is the latest offering in the world of HD video surveillance cameras.

AI FEATURE SUPPORTED

AI for video surveillance utilizes computer software programs that analyze the audio and images from video surveillance cameras in order to recognize humans, vehicles, objects, attributes, and events.



*Vehicle Detection Using AI Security Camera System

METAL BODY AND THERMAL HEAT DESIPATION

This heat sink, transfers heat by conduction from a Microprocessor to a specially constructed metal plate which is directly connected with a outer metal body to dispose the heat to surrounding environment.

WDR

Our camera lens uses different shutter speeds to allow more light in some areas of the image. So as the conditions of light it automatically adjust the aperture rate with TS optimized software.

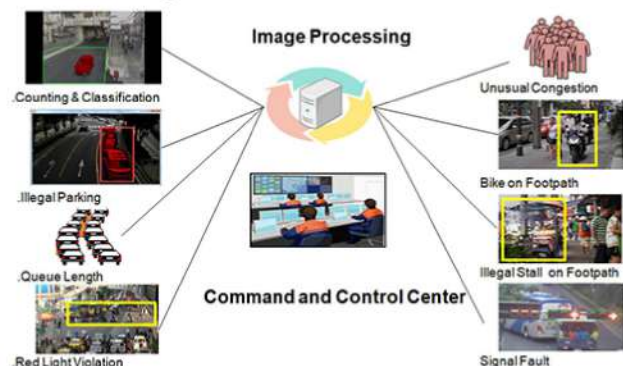


FEATURES

- Bullet Metal Body, Ip67 Water And Dust-proof
- 5mp 4k Ip Network Camera Onvif
- Lens Fixed 3.6mm(30mtr) / 6mm(50mtr) / 12mm(60mtr) /16mm(80mtr)
- Night Vision: Ir Black&with(30mtr) / Colour Warm(25mtr)
- DWDR, Day/Night (ICR), 3DNR, AWB, AGC, BLC

SMART IMAGE PROCESSING

A smart image processing CCTV camera device capable of performing digital image processing and also motion image analysis and tracking upon a captured image by itself to monitor and obtain a clear image.





ONVIF
Member

GUARDIAN X SERIES

AI CAMERA

A varifocal lens is an adjustable camera lens with independently adjustable focus and zoom. This is usually done using a pair of knobs or rods located near the lens of the camera. In this article, we will outline when it is beneficial to use a varifocal bullet or dome camera.

IS 13253
(PART 1): 2010
IEC 60950-1: 2005



R-81003000





MOTORIZED 2.8MM TO 12MM LENS

The camera can be adjusted via digital instruction, as opposed to manually having to zoom or focus. The cameras can be altered using apps or software from any computer or device and can be done swiftly and accurately.

Automatic iris lenses are controlled by the camera to make sure that the right amount of light gets through to the imaging chip.

FEATURES

- Minimum Illumination: Color: 0.01 lux @ (f/1.4, AGC on), 0 lux with IR
- 2688 × 1520 Resolution @ 30 fps
- 2.8 to 12 mm Motorized Varifocal Lens
- H.265+, H.265, H.264+, H.264
- Main Stream: 30 fps (2688 × 1520, 1920 × 1080, 1280 × 720)
- EXIR 2.0 Range Up to 100 ft (30 m)
- 12 VDC and PoE+ (802.3at)
- Vandal Metal Body, Water Proof IP 66

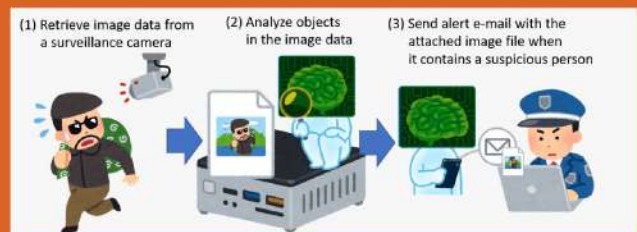
SMART ALERT SYSTEM

Intrusion alert is a type of motion detection technology that will notify you whenever trespassers appear in front of your CCTV system.



SMART THEFT RECOGNIZATION

This application uses foreground detector and blob analysis to detect motion of thief. This system focuses on detecting objects.



130DB, WDR, 3D DNR

3D-DNR: Digital Noise Reduction decreases picture noise and reduces colour mixture errors. 3D-DNR stands for multidimensional digital noise reduction.



GuardianEye Pro

AI Camera Series

A varifocal lens is an adjustable camera lens with independently adjustable focus and zoom. This is usually done using a pair of knobs or rods located near the lens of the camera. In this article, we will outline when it is beneficial to use a varifocal bullet or dome camera

IS 13252
(PART 1): 2010
IEC 60950-1 : 2005



R-81003000



SMART LONG RANGE COVERAGE

The integrated 12X optical zoom lens will allow you to zoom in during live video on a face or license plate up to 270 feet away. At the touch of a button from your computer, smartphone, tablet, or NVR, you can control the optical lens and set the angle of video to be as wide as 59 degrees, or as narrow as 4 degrees.

8MP COMS SENSOR 1/1.2"

8MP CCTV cameras record and display video in 4K quality, the highest quality image widely available. While you can get a 4K camera with slightly higher megapixels, there isn't much need. After 8MP, with current technology, you are starting waste you money. That is unless you want to pay for the right equipment.

STARLIGHT TECHNOLOGY

It provides high definition coloured images in the dark, which is a result of starlight technology combined with the intelligent auto exposure. This enables the camera to adapt to the low light conditions & produce images which comparatively clearer as compared to the conventional cameras.



FEATURES

- Metal Bullet Body IP68 Rating
- Resolution Upto 8mp 4k Pure Sensor
- 3.6mm To 25mm Motorized Verifocal Lens
- Minimum Illumination: Color: 0.01 lux @ (f/1.4, AGC on), 0 lux with IR
- 2688 × 1520 Resolution @ 30 fps
- Main Stream: 30 fps (2688 × 1520, 1920 × 1080, 1280 × 720)
- EXIR 2.0 Range Up to 300 ft
- 12 VDC and PoE+ (802.3at)
- Industrial Grade Camera 5 Year Warrenty



Guardian Watch

SERIES



Pan-tilt-zoom (PTZ) cameras are built with mechanical parts that allow them to swivel left to right, tilt up and down, and zoom in and out of a scene. They're typically used to monitor wide open areas requiring a 180- or 360 degree view, and deployed in guard stations where active personnel can operate them through a remote camera controller. Depending on the camera or software, they can also be set to automatically follow motion-triggered activity or adhere to a pre-set schedule. PTZ cameras are generally implemented in tandem with a larger surveillance system, in which the PTZ tracks movement while a fixed camera takes detailed shots.

IS 13252
(PART 1): 2010
IEC 60950-1: 2005



R-81003000

FALSE ALARM FILTER

Algorithm filters out false alarms caused by non-target objects such as animals, leaves and light changes, greatly improving the accuracy of false alarm filter & auto-tracking.



360 DIGREE COVERAGE

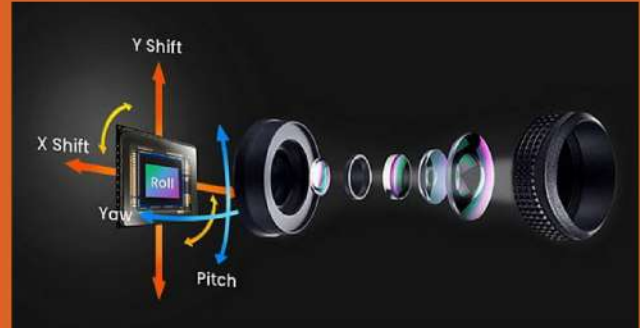
These devices provide a full 360-degree view of the scene. As a result, fewer cameras and infrastructure are required to monitor an area, which provides significant cost-savings, both at the time of installation and over the life of the system.

FEATURES

- 1/2.8" 2Megapixel STARVIS™ CMOS
- Powerful 32X optical zoom
- Starlight technology
- 120dB true WDR, 3D DNR
- Max. 25/30 fps@1080P, 25/30/50/60 fps@720P
- IP66, IR DISTANCE 150MTR
- 300 Degree rotational
- Night vision IR B&W 300mtrs , Colour Warm 150mtrs

OPTICAL IMAGE STABILIZATION

Equipped with gyroscopes, Optical Image Stabilization (OIS) lenses, and dedicated processors, PTZ cameras can sense vibrations, then make quick and precise compensations to keep the video stable.



SMART IR & WARM SHIFT

As the IR is essential for long distance coverage, and warm led for night colour vision as for now we cannot combine them together but we can arrange with software as if you are looking the object which is near it automatically turns in warm led, and if the object is far then it will turn in to IR system.



32X ZOOM WITH 3.6MM TO 25MM LENS

camera that comes equipped with motorized lenses. The camera can be adjusted via digital instruction, as opposed to manually having to zoom or focus. The cameras can be altered using apps or software from any computer or device and can be done swiftly and accurately.



Elevate your security infrastructure with

TS SOLAR PTZ CAMERA

Safety Made Easier



Supports Solar Energy



IP66 Dust & Water Protection



Color Night Vision



320 Degree Rotation



Full HD Video



Supports 128GB Memory Card

Introducing our latest innovation, the TS Solar CCTV Camera, designed to revolutionize your security and monitoring experience. This state-of-the-art camera combines cutting-edge technology with eco-friendly features for comprehensive surveillance

Key Features

- Image Sensor : 1/2.7" Progressive CMOS Sensor
- Full HD Lens: Featuring a Full HD 3.6mm lens for precise and detailed surveillance.
- Rotation Angle: Horizontal 0~320degree vertical 0~90degree
- Solar Panel Power: 30w/60w.
- Support Email Notification & FTP.
- Rotation Speed: Horizontal 40degree/s Vertical 40degree/s
- Night Vision: Infrared Night Vision, Full Color Night Vision



IS 13252 (PART 1): 2010 IEC 60950-1: 2005



R-81003000

TS WIFI PTZ

Pan 355° & Tilt 90°



Color Night Vision



4MP Resolution



AI-Powered Person Detection



H.265 Video Compression



IP66 Dust & Water Protection



Wi-Fi 2.4 Ghz with Dual External Antennas



Micro (Up to 256 GB)

BIG PICTURE DETAILS in One View

Explore intelligent surveillance with dual light visual modes – infrared and color night vision. Featuring smart human detection autotracking, instant motion-triggered alarms, and support for SD card & cloud service. Enjoy the convenience of Pan 355° Tilt 90° for comprehensive monitoring. Stay secure effortlessly!

IS 13252
(PART 1): 2010
IEC 60950-1: 2005



R-81003000

TS AI-NETWORK VIDEO RECORDER (TSANVR)

Techno Support's AI NVR redefines video recording with seamless storage, bridging analog and digital sources. Packed with AI features like ID+, face detection, and fisheye lens support, it elevates surveillance to a sophisticated and responsive level for comprehensive monitoring



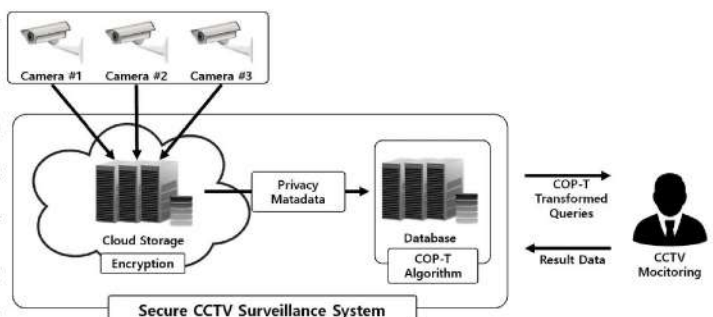
FEATURES

- Video analytics
- Recording mode options
- Power-over-ethernet (PoE) network switches
- PTZ camera controls
- Remote configuration
- Recording triggers
- Video compression schemas
- Dvr upto 32ch & nvr upto 128 ch.
- SATA 1, 2, 4, 9 ports are available
- Resolution upto 12MP support



TS AI-VIDEO METHADETA

Techno Support's AI Network Video Recorder (NVR) features state-of-the-art video metadata capabilities, incorporating cameras equipped with motorized lenses. This advanced system enables digital adjustments, eliminating the need for manual zoom or focus. The cameras can be effortlessly modified using apps or software from any computer or device, ensuring swift and accurate customization for optimal surveillance.



TS AI-PERIMETER PROTECTION

Within the realm of AI Network Video Recorder solutions by Techno Support, the emphasis on perimeter protection becomes paramount. Positioned as the initial line of defense against unwelcome intruders, providers of industrial, civil, and residential security solutions witness a surge in demand for cutting-edge techniques, reshaping the approach to perimeter protection and wide-area surveillance.



TS AI-INTELLIGENT ANALYZATION

Unveiling Techno Support's groundbreaking 4K Intelligent NVRs – redefining network surveillance. Packed with features like ID+ for precise motion detection, fisheye lens support, face detection, and advanced analytics. Elevate your CCTV monitoring with cutting-edge technology.



TS AI-HEAT MAP

Experience retail evolution with Techno Support's AI NVR and Heat-Mapping Technology. Dynamic maps reveal shopper patterns, hot spots, and nuanced behaviors. Redefining retail analytics for strategic decision-making.





SMPS / POES

Output Over Load Shut Down, All Components Are Rated for 105 deg C, Stabilized Output Low Interference, Surge Protection, Over Temperature Protection, Low Ripple Voltage & Compact Size, Light Weight Shock Proof. 4 Channel Security Camera Power Supply, Highly Integrated SMPS Switcher IC Design, Convection Air Cooling for Better Performance, Power on LED Indicators, High Efficiency & Low Energy Consumption, Multiple Protection System & Stable Power Output.

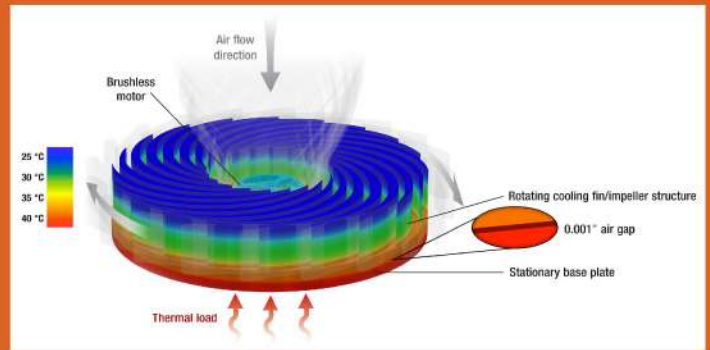
IS 13252
 IPART: 10: 2010
 IEC 60950-1: 2005



R-81003000

SELF COOLING TECHNOLOGY

As per the temperature of components in SMPS it automatically adjust the the power to fan which will control the speed of it. This system is used to draw cooler air into the case from the outside, expel warm air from inside and move air across a heat sink to cool a particular component.



SMART POWER DISSIPATION

SMPS output supply recognizes the load and the pressure of power required on each channel and diversify the energy and make it avail to needy connected devices in parallel. The Buck switching regulator is a type of switch mode power supply circuit that is designed to efficiently reduce DC voltage from a higher voltage to a lower one, that is it subtracts or "Bucks" the supply voltage, thereby reducing the voltage available at the output terminals without changing the polarity. In other words, the buck switching regulator is a step-down regulator circuit, so for example a buck converter can convert say, +12 volts to +5 volts.

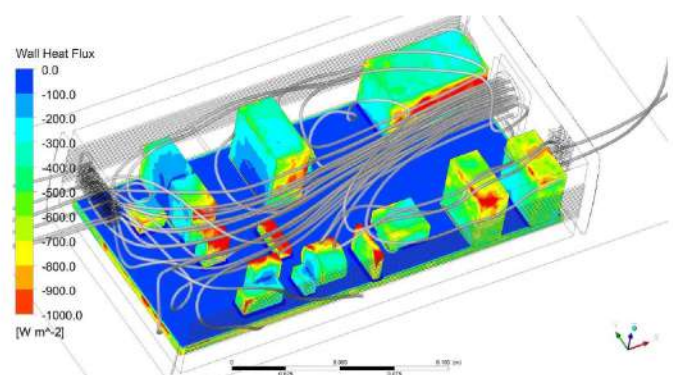


FEATURES

- Stable power distribution
- 12v, 5a/10a/15a/30a/45a available
- Built-in heat sink
- Industrial Poe and smps consist fans for the cooling system
- Poe: 4 / 8 / 16 / 24 / 32 ports with 100/1000mbps
- Smps: 4 / 8 / 16 ch available

COOLING FAN AND HEAT SHINK

A heat sink and fan (HSF) is an active cooling solution used to cool down integrated circuits in computer systems, commonly the central processing unit (CPU). A heat sink and fan is often used in modern computer systems to keep the processor cool.





TS DOMESTIC 9/10/18W & CUSTOM BULBS

- Light Colour White/ Warm
- Material Polycarbonate
- Energy-saving Consume 90% less energy compared to incandescent bulbs, saving big money on energy bills.
- Long Lasting A+ energy efficient led light bulbs 50/100/200 watt equivalent are a great replacement for incandescent, halogen, & CFL lamps, last 20 times longer, up to 20000 hrs lifetime.



LONG LIFESPAN



ENERGY EFFICIENCY



NO HEAT OR UV EMISSIONS



LOW VOLTAGE OPERATION



RAPID CYCLING

TS DOMESTIC 20W/40W & CUSTOM TUBELIGHTS

TECHNO SUPPORT
Securing the Future



Long Lifespan



Energy Efficiency



Cost Savings



Durability



Uniform Lighting



No UV Emissions



Environment Friendly

Light Colour

White/ Warm

Long Lasting

A+ energy efficient led tubelight 20/40 watt equivalent are a great replacement for incandescent, halogen, & CFL lamps, last 20 times longer, up to 20000 hrs lifetime.

Material

Polycarbonate

Energy-saving

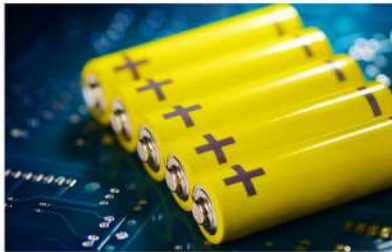
Consume 90% less energy compared to incandescent bulbs, saving big money on energy bills.



STREET LIGHT

POLY-CRYSTALLINE SOLAR PANEL

6V/8W Polycrystalline solar, photovoltaic panels have a conversion rate of 19% and a fast charging, 6000 mAh battery; it only takes 6-8 hours to fully charge; Works upto 1-2 days. It charges in winter and rainy weather.



6000 mAh LIFEPO4 BATTERY

outdoor use is powered by a 6 AH LifePo4 battery, which allows it to illuminate for 1-2 days (depends on mode). The LifePo4 batteries have a 4 to 6 year lifespan.

Solar Panel	Polycrystalline 6V/8W
Brightness	1600 LM
Battery	Life PO4 6000 Mah/3.2V
LED's	96 Led's
Color Temperature	6000 – 7000K
Color Mode	Cool White
Charging Time	6 – 8 hours
Work Time	1 – 2 (Depends on mode)
Material	ABS + PC
Waterproof	IP65
Package Weight	2.2 kg

IS 13252
(PART 1): 2010
IEC 60950-1: 2005



R-81003000



TS HIGH MAST LIGHTING

Introducing our solar high mast pole—an innovative lighting solution with in-house design expertise. Our poles offer structural and foundation design capabilities, providing installation flexibility with three-point and two-point suspension options. We conduct rigorous testing on winches and motors to ensure reliability. Our illumination designs cater to various applications, and we provide scalable mechanical and electrical system designs. The solar high mast pole combines a high mast structure with solar panels, capturing energy during the day for efficient night-time lighting. Ideal for areas lacking traditional lighting, it's perfect for outdoor spaces like parking lots, highways, stadiums, and industrial facilities.

IS 13252
 (PART 1): 2010
 IEC 60950-1: 2005



R-81003000



IN-HOUSE DESIGN EXPERTISE

For high mast lighting design, we have structural and foundation design capabilities using specialized software.

SUSPENSION OPTIONS

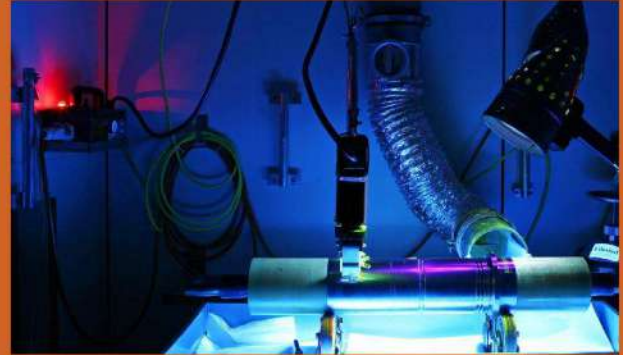
Our high mast light poles come in three-point and two-point suspension configurations for installation flexibility

FEATURES

- Specialized software for high mast lighting design ensures structural proficiency.
- Poles offer two-point and three-point suspension options for versatile installations.
- Thorough testing of winches and motors ensures reliability before dispatch.
- Expertise in creating optimal lighting designs for diverse outdoor applications.
- High-efficiency panels and LED lighting provide eco-friendly illumination for various outdoor settings.

RIGOROUS TESTING

All winches and motors are thoroughly tested with proper loads before dispatch.



ILLUMINATION DESIGN

Equipped to handle optimum designs for all lighting applications like stadiums, traffic junctions, airports, sea ports, container yards, railway marshalling yards, etc.

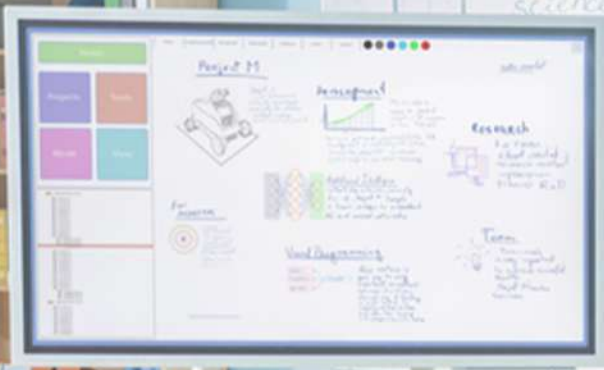


MECHANICAL DESIGN

To offer scalable designs of complete raising and lowering systems.


ELECTRICAL SYSTEM DESIGN


In-house team of engineers design and execute outdoor and indoor distribution for plant electrification, outdoor illumination and industrial plant illumination projects.




TS 83 INCH

AIOC INTERACTIVE PANEL DISPLAY

-  Smart classflat panel.

-  Perfect 4K resolution.

-  6GB Ram 128GB Storage.

Full touch panel with write board. 20 points touch, <5-8ms response.

Multiple signal input HDMI, VGA, YPbPr, TV etc.

Infrared touch technology for rich writing experience.

Support APK install & authorize management, permit or forbidden application.



TS SMART HD TV SERIES

<p>32"</p>	● Resolution	768p	● Operating System	Android 11, 1 RAM, 8 ROM
	● Refresh Rate	60 Hz	● Sound	20 Watts output, Powerful Stereo Output
	● Connector Type	Wi-Fi, USB, Ethernet, HDMI		
<p>43"</p>	● Resolution	1080p UHD	● Operating System	Android 11, 2GB RAM, 16GB ROM
	● Refresh Rate	60 Hz	● Sound	20W Powerful Stereo Speakers, Dolby Audio ATMOS
	● Connector Type	Wi-Fi, USB, Ethernet, HDMI		
<p>50"</p>	● Resolution	4K	● Operating System	Android 11, 4 RAM, 8 ROM
	● Refresh Rate	60 Hz	● Sound	24 Watts Output, Dolby Audio, Dolby Atmos Decoding
	● Connector Type	Wi-Fi, USB, Ethernet, HDMI		

SUPPORTS WIDE RANGE OF ANDROID APPLICATIONS



- Smart TV Features Google Assistant, Chromecast, Miracast, DLNA, Auto Low Latency Mode

Range Starts From ₹6,999/-*

IS 13252 (PART 1): 2010
IEC 60950-1: 2005



R-81003000

TS DOMESTIC & COMMERCIAL,

Desktop or Laptop Range



DESKTOP PC

- Type Slim, All in One, Base, Assembled
- Processor Dualcore, i3, i5, i7, i9, M1, M2
- Storage Type SSD, HDD
- Storage Options 256GB, 512GB, 1TB, 2TB, 4TB & more
- Ram 4GB, 8GB, 16GB, 32GB & more
- Graphics 2GB, 4GB, 6GB, 8GB & more

LAPTOP



- Type Basic, 360 degree, touch, 2 in 1
- Processor Dualcore, i3, i5, i7, i9, M1, M2
- Storage Type SSD, HDD
- Storage Options 256GB, 512GB, 1TB, 2TB
- Ram 4GB, 8GB, 16GB, 32GB
- Graphics 2GB, 4GB, 6GB

COMMERICAL DESKTOP RANGE



- Type Network Server, Work station, Communication source
- Processor i3, i5, i7, i9, R2, R5, R7, A8, E9,
- Storage Type SSD, HDD
- Storage Options 4TB, 6TB, 8TB, 12TB, 16TB & more
- Ram 2GB, 64GB, 128GB and more
- Graphics 2GB, 4GB, 6GB, 8GB and more

TS INVERTER & BATTERY



TS INVERTER & BATTERY

- Inverter Type Pure Sine wave inverter ● Safety
 - Material Metal & Plsatic
 - Included Components Inverter, Battery, Trolley ● Battery Type
- MCB for protection from Input main.
Tall tubular inverter battery with rugged construction

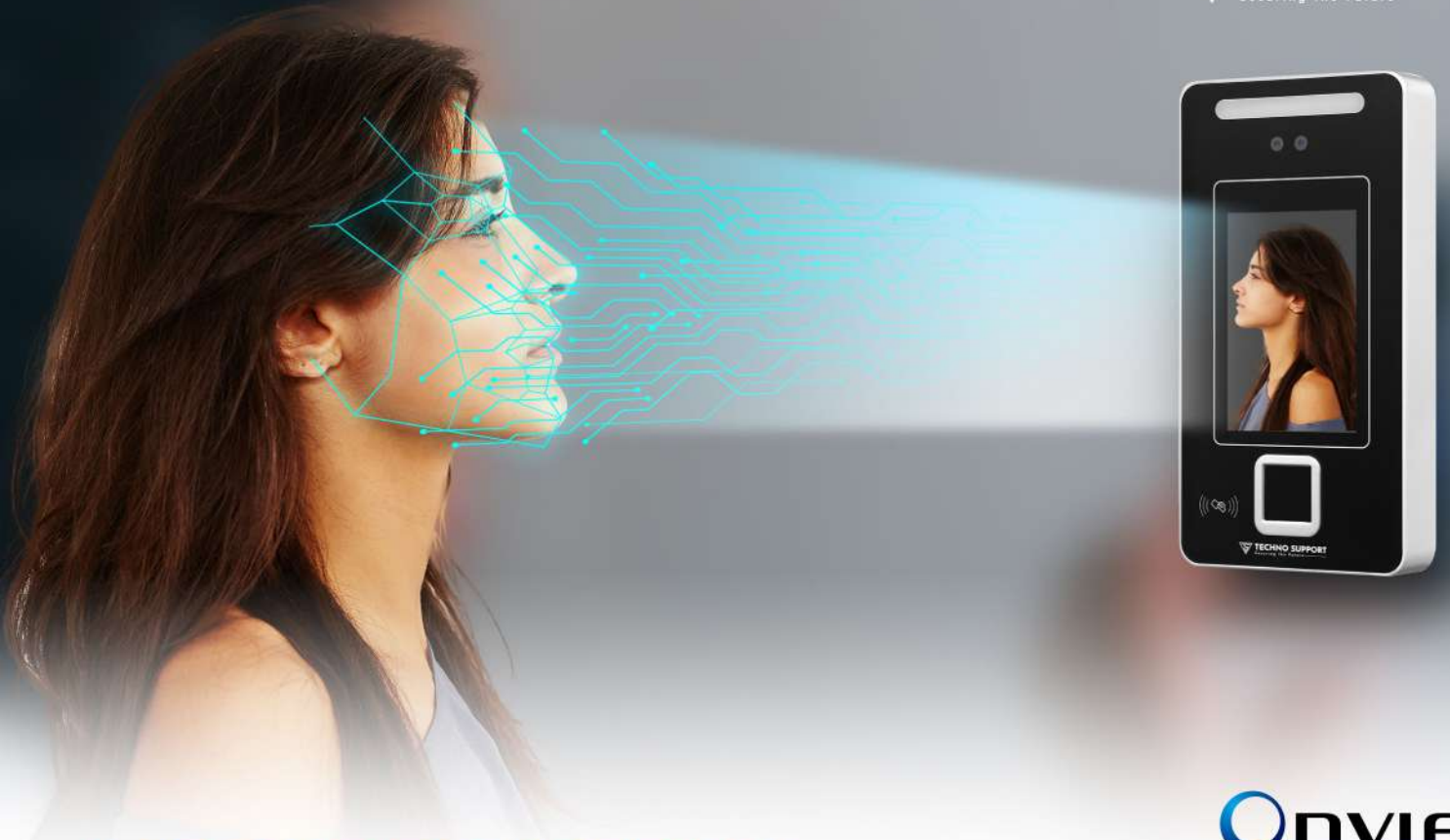


TS SOLAR INVERTER & BATTERY

- Battery Compatible with 1 solar battery of 150Ah
- Nominal Voltage 12V; C10 up to 10.5V at 27oC: 150 Ah
- Electrolyte Volume 20.6 Liter
- Inverter Type Pure Sine Wave solar hybrid Inverter with 80% efficiency & in-built PWM charge controller.
- Technology Power savings of 1.5 - 3 units per day with the help of Intelligent Solar Optimization Technique (ISOT), fast battery charging through i-Charge technology.
- BIS Certified TS Globe solar panels are BIS certified as per IS/IEC standards; Space Requirement - 20 sq. feet (approx.) for the single panel; Cables & Connectors - 1000mm length meter wire for a reliable connection.

IS 13252 (PART 1): 2010
IEC 60950-1 : 2005





AI FACE BIOMETRIC ATTENDANCE SYSTEM

TS -AI FACE 1500



Introducing our cutting-edge AI Face Biometric Attendance System, a revolutionary solution that redefines workforce management. Designed for seamless integration into diverse environments, this advanced system offers unparalleled accuracy and efficiency in tracking attendance.

FEATURES



FACIAL RECOGNITION TECHNOLOGY

Elevate efficiency with our rapid, contactless AI facial recognition for precise attendance tracking.



REAL-TIME MONITORING

Effortlessly track attendance patterns for valuable insights.



ADAPTIVE AI ALGORITHMS

This adaptability enhances accuracy and minimizes false positives or negatives.



MULTI-LEVEL SECURITY

Prioritize security with multi-level authentication protocols.

- Full Access Control Support
- P2P Cloud Support
- Face, Card & Password Support
- LAN/WiFi Support
- Voice Output Support
- Touch Screen Support
- User TimeZone Support
- Valid Date Range Support
- Antipass Support
- Wiegand I/O Support

FALSE ALARM FILTER

Algorithm filters out false alarms caused by non-target objects such as animals, leaves and light changes, greatly improving the accuracy of false alarm filter & auto-tracking.



360 DIGREE COVERAGE

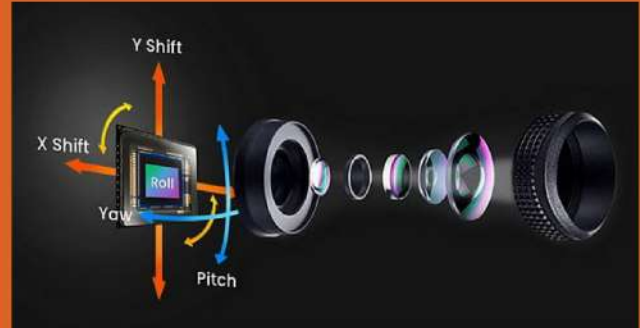
These devices provide a full 360-degree view of the scene. As a result, fewer cameras and infrastructure are required to monitor an area, which provides significant cost-savings, both at the time of installation and over the life of the system.

FEATURES

- 1/2.8" 2Megapixel STARVIS™ CMOS
- Powerful 32X optical zoom
- Starlight technology
- 120dB true WDR, 3D DNR
- Max. 25/30 fps@1080P, 25/30/50/60 fps@720P
- IP66, IR DISTANCE 150MTR
- 300 Degree rotational
- Night vision IR B&W 300mtrs , Colour Warm 150mtrs

OPTICAL IMAGE STABILIZATION

Equipped with gyroscopes, Optical Image Stabilization (OIS) lenses, and dedicated processors, PTZ cameras can sense vibrations, then make quick and precise compensations to keep the video stable.



SMART IR & WARM SHIFT

As the IR is essential for long distance coverage, and warm led for night colour vision as for now we cannot combine them together but we can arrange with software as if you are looking the object which is near it automatically turns in warm led, and if the object is far then it will turn in to IR system.



32X ZOOM WITH 3.6MM TO 25MM LENS

camera that comes equipped with motorized lenses. The camera can be adjusted via digital instruction, as opposed to manually having to zoom or focus. The cameras can be altered using apps or software from any computer or device and can be done swiftly and accurately.



Elevate your security infrastructure with

TS SOLAR PTZ CAMERA

Safety Made Easier



Supports Solar Energy



IP66 Dust & Water Protection



Color Night Vision



320 Degree Rotation



Full HD Video



Supports 128GB Memory Card

Introducing our latest innovation, the TS Solar CCTV Camera, designed to revolutionize your security and monitoring experience. This state-of-the-art camera combines cutting-edge technology with eco-friendly features for comprehensive surveillance

Key Features

- Image Sensor : 1/2.7" Progressive CMOS Sensor
- Full HD Lens: Featuring a Full HD 3.6mm lens for precise and detailed surveillance.
- Rotation Angle: Horizontal 0~320degree vertical 0~90degree
- Solar Panel Power: 30w/60w.
- Support Email Notification & FTP.
- Rotation Speed: Horizontal 40degree/s Vertical 40degree/s
- Night Vision: Infrared Night Vision, Full Color Night Vision



IS 13252 (PART 1): 2010 IEC 60950-1: 2005



R-81003000

TS WIFI PTZ

Pan 355° & Tilt 90°



Color Night Vision



4MP Resolution



AI-Powered Person Detection



H.265 Video Compression



IP66 Dust & Water Protection



Wi-Fi 2.4 Ghz with Dual External Antennas



Micro (Up to 256 GB)

BIG PICTURE DETAILS in One View

Explore intelligent surveillance with dual light visual modes – infrared and color night vision. Featuring smart human detection autotracking, instant motion-triggered alarms, and support for SD card & cloud service. Enjoy the convenience of Pan 355° Tilt 90° for comprehensive monitoring. Stay secure effortlessly!

IS 13252
(PART 1): 2010
IEC 60950-1: 2005



R-81003000

TS AI-NETWORK VIDEO RECORDER (TSANVR)

Techno Support's AI NVR redefines video recording with seamless storage, bridging analog and digital sources. Packed with AI features like ID+, face detection, and fisheye lens support, it elevates surveillance to a sophisticated and responsive level for comprehensive monitoring



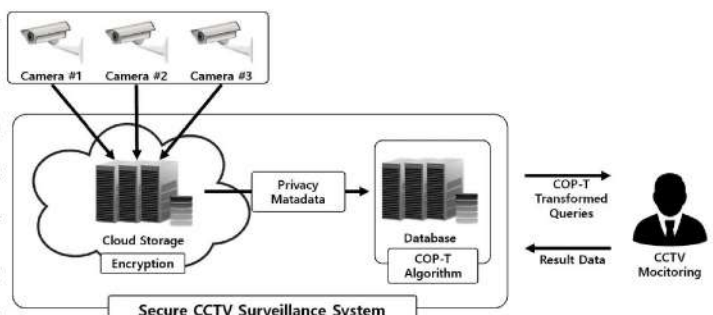
FEATURES

- Video analytics
- Recording mode options
- Power-over-ethernet (PoE) network switches
- PTZ camera controls
- Remote configuration
- Recording triggers
- Video compression schemas
- Dvr upto 32ch & nvr upto 128 ch.
- SATA 1, 2, 4, 9 ports are available
- Resolution upto 12MP support



TS AI-VIDEO METHADETA

Techno Support's AI Network Video Recorder (NVR) features state-of-the-art video metadata capabilities, incorporating cameras equipped with motorized lenses. This advanced system enables digital adjustments, eliminating the need for manual zoom or focus. The cameras can be effortlessly modified using apps or software from any computer or device, ensuring swift and accurate customization for optimal surveillance.



TS AI-PERIMETER PROTECTION

Within the realm of AI Network Video Recorder solutions by Techno Support, the emphasis on perimeter protection becomes paramount. Positioned as the initial line of defense against unwelcome intruders, providers of industrial, civil, and residential security solutions witness a surge in demand for cutting-edge techniques, reshaping the approach to perimeter protection and wide-area surveillance.



TS AI-INTELLIGENT ANALYZATION

Unveiling Techno Support's groundbreaking 4K Intelligent NVRs – redefining network surveillance. Packed with features like ID+ for precise motion detection, fisheye lens support, face detection, and advanced analytics. Elevate your CCTV monitoring with cutting-edge technology.



TS AI-HEAT MAP

Experience retail evolution with Techno Support's AI NVR and Heat-Mapping Technology. Dynamic maps reveal shopper patterns, hot spots, and nuanced behaviors. Redefining retail analytics for strategic decision-making.





SMPS / POES

Output Over Load Shut Down, All Components Are Rated for 105 deg C, Stabilized Output Low Interference, Surge Protection, Over Temperature Protection, Low Ripple Voltage & Compact Size, Light Weight Shock Proof. 4 Channel Security Camera Power Supply, Highly Integrated SMPS Switcher IC Design, Convection Air Cooling for Better Performance, Power on LED Indicators, High Efficiency & Low Energy Consumption, Multiple Protection System & Stable Power Output.

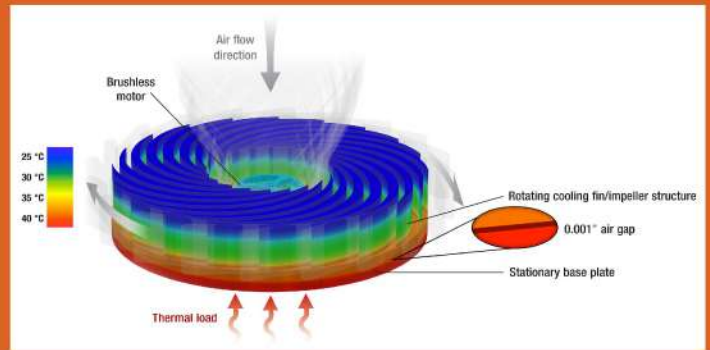
IS 13252
IPART: 0: 2010
IEC 60950-1: 2005



R-81003000

SELF COOLING TECHNOLOGY

As per the temperature of components in SMPS it automatically adjust the the power to fan which will control the speed of it. This system is used to draw cooler air into the case from the outside, expel warm air from inside and move air across a heat sink to cool a particular component.



SMART POWER DISSIPATION

SMPS output supply recognizes the load and the pressure of power required on each channel and diversify the energy and make it avail to needy connected devices in parallel. The Buck switching regulator is a type of switch mode power supply circuit that is designed to efficiently reduce DC voltage from a higher voltage to a lower one, that is it subtracts or "Bucks" the supply voltage, thereby reducing the voltage available at the output terminals without changing the polarity. In other words, the buck switching regulator is a step-down regulator circuit, so for example a buck converter can convert say, +12 volts to +5 volts.

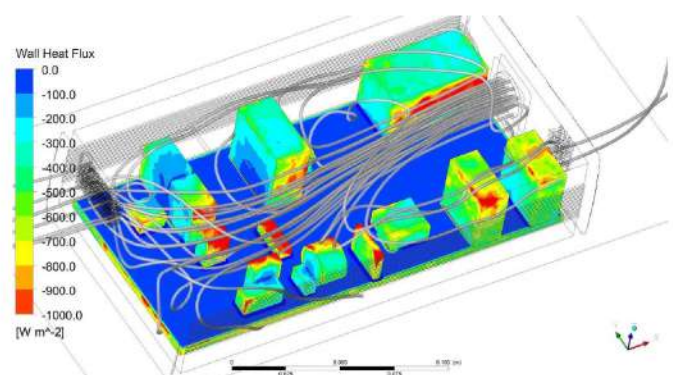


FEATURES

- Stable power distribution
- 12v, 5a/10a/15a/30a/45a available
- Built-in heat sink
- Industrial Poe and smps consist fans for the cooling system
- Poe: 4 / 8 / 16 / 24 / 32 ports with 100/1000mbps
- Smps: 4 / 8 / 16 ch available

COOLING FAN AND HEAT SHINK

A heat sink and fan (HSF) is an active cooling solution used to cool down integrated circuits in computer systems, commonly the central processing unit (CPU). A heat sink and fan is often used in modern computer systems to keep the processor cool.





TS DOMESTIC 9/10/18W & CUSTOM BULBS

- Light Colour White/ Warm
- Material Polycarbonate
- Energy-saving Consume 90% less energy compared to incandescent bulbs, saving big money on energy bills.
- Long Lasting A+ energy efficient led light bulbs 50/100/200 watt equivalent are a great replacement for incandescent, halogen, & CFL lamps, last 20 times longer, up to 20000 hrs lifetime.



LONG LIFESPAN



ENERGY EFFICIENCY



NO HEAT OR UV EMISSIONS



LOW VOLTAGE OPERATION



RAPID CYCLING

TS DOMESTIC 20W/40W & CUSTOM TUBELIGHTS

TECHNO SUPPORT
Securing the Future



Long Lifespan



Energy Efficiency



Cost Savings



Durability



Uniform Lighting



No UV Emissions



Environment Friendly

Light Colour

White/ Warm

Long Lasting

A+ energy efficient led tubelight 20/40 watt equivalent are a great replacement for incandescent, halogen, & CFL lamps, last 20 times longer, up to 20000 hrs lifetime.

Material

Polycarbonate

Energy-saving

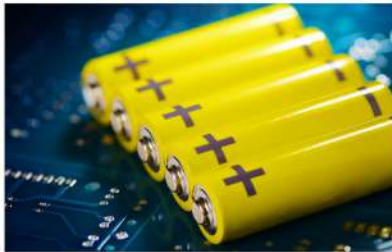
Consume 90% less energy compared to incandescent bulbs, saving big money on energy bills.



STREET LIGHT

POLY-CRYSTALLINE SOLAR PANEL

6V/8W Polycrystalline solar, photovoltaic panels have a conversion rate of 19% and a fast charging, 6000 mAh battery; it only takes 6-8 hours to fully charge; Works upto 1-2 days. It charges in winter and rainy weather.



6000 mAh LIFEPO4 BATTERY

outdoor use is powered by a 6 AH LifePo4 battery, which allows it to illuminate for 1-2 days (depends on mode). The LifePo4 batteries have a 4 to 6 year lifespan.

Solar Panel	Polycrystalline 6V/8W
Brightness	1600 LM
Battery	Life PO4 6000 Mah/3.2V
LED's	96 Led's
Color Temperature	6000 – 7000K
Color Mode	Cool White
Charging Time	6 – 8 hours
Work Time	1 – 2 (Depends on mode)
Material	ABS + PC
Waterproof	IP65
Package Weight	2.2 kg

IS 13252
(PART 1): 2010
IEC 60950-1: 2005



R-81003000



TS HIGH MAST LIGHTING

Introducing our solar high mast pole—an innovative lighting solution with in-house design expertise. Our poles offer structural and foundation design capabilities, providing installation flexibility with three-point and two-point suspension options. We conduct rigorous testing on winches and motors to ensure reliability. Our illumination designs cater to various applications, and we provide scalable mechanical and electrical system designs. The solar high mast pole combines a high mast structure with solar panels, capturing energy during the day for efficient night-time lighting. Ideal for areas lacking traditional lighting, it's perfect for outdoor spaces like parking lots, highways, stadiums, and industrial facilities.

IS 13252
 (PART 1): 2010
 IEC 60950-1: 2005



R-81003000



IN-HOUSE DESIGN EXPERTISE

For high mast lighting design, we have structural and foundation design capabilities using specialized software.

SUSPENSION OPTIONS

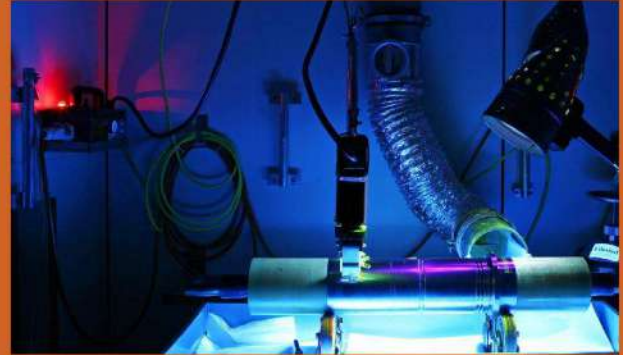
Our high mast light poles come in three-point and two-point suspension configurations for installation flexibility

FEATURES

- Specialized software for high mast lighting design ensures structural proficiency.
- Poles offer two-point and three-point suspension options for versatile installations.
- Thorough testing of winches and motors ensures reliability before dispatch.
- Expertise in creating optimal lighting designs for diverse outdoor applications.
- High-efficiency panels and LED lighting provide eco-friendly illumination for various outdoor settings.

RIGOROUS TESTING

All winches and motors are thoroughly tested with proper loads before dispatch.



ILLUMINATION DESIGN

Equipped to handle optimum designs for all lighting applications like stadiums, traffic junctions, airports, sea ports, container yards, railway marshalling yards, etc.



MECHANICAL DESIGN

To offer scalable designs of complete raising and lowering systems.


ELECTRICAL SYSTEM DESIGN


In-house team of engineers design and execute outdoor and indoor distribution for plant electrification, outdoor illumination and industrial plant illumination projects.




TS 83 INCH

AIOC INTERACTIVE PANEL DISPLAY

-  Smart classflat panel.

-  Perfect 4K resolution.

-  6GB Ram 128GB Storage.

Full touch panel with write board. 20 points touch, <5-8ms response.

Multiple signal input HDMI, VGA, YPbPr, TV etc.

Infrared touch technology for rich writing experience.

Support APK install & authorize management, permit or forbidden application.



TS SMART HD TV SERIES

<p>32"</p>	● Resolution	768p	● Operating System	Android 11, 1 RAM, 8 ROM
	● Refresh Rate	60 Hz	● Sound	20 Watts output, Powerful Stereo Output
	● Connector Type	Wi-Fi, USB, Ethernet, HDMI		
<p>43"</p>	● Resolution	1080p UHD	● Operating System	Android 11, 2GB RAM, 16GB ROM
	● Refresh Rate	60 Hz	● Sound	20W Powerful Stereo Speakers, Dolby Audio ATMOS
	● Connector Type	Wi-Fi, USB, Ethernet, HDMI		
<p>50"</p>	● Resolution	4K	● Operating System	Android 11, 4 RAM, 8 ROM
	● Refresh Rate	60 Hz	● Sound	24 Watts Output, Dolby Audio, Dolby Atmos Decoding
	● Connector Type	Wi-Fi, USB, Ethernet, HDMI		

SUPPORTS WIDE RANGE OF ANDROID APPLICATIONS



- Smart TV Features Google Assistant, Chromecast, Miracast, DLNA, Auto Low Latency Mode

Range Starts From ₹6,999/-*

IS 13252 (PART 3): 2010 IEC 60950-1: 2005



R-81003000

TS DOMESTIC & COMMERCIAL,

Desktop or Laptop Range



DESKTOP PC

- Type Slim, All in One, Base, Assembled
- Processor Dualcore, i3, i5, i7, i9, M1, M2
- Storage Type SSD, HDD
- Storage Options 256GB, 512GB, 1TB, 2TB, 4TB & more
- Ram 4GB, 8GB, 16GB, 32GB & more
- Graphics 2GB, 4GB, 6GB, 8GB & more

LAPTOP



- Type Basic, 360 degree, touch, 2 in 1
- Processor Dualcore, i3, i5, i7, i9, M1, M2
- Storage Type SSD, HDD
- Storage Options 256GB, 512GB, 1TB, 2TB
- Ram 4GB, 8GB, 16GB, 32GB
- Graphics 2GB, 4GB, 6GB

COMMERCIAL DESKTOP RANGE



- Type Network Server, Work station, Communication source
- Processor i3, i5, i7, i9, R2, R5, R7, A8, E9,
- Storage Type SSD, HDD
- Storage Options 4TB, 6TB, 8TB, 12TB, 16TB & more
- Ram 2GB, 64GB, 128GB and more
- Graphics 2GB, 4GB, 6GB, 8GB and more

TS INVERTER & BATTERY



TS INVERTER & BATTERY

- Inverter Type Pure Sine wave inverter ● Safety
 - Material Metal & Plsatic
 - Included Components Inverter, Battery, Trolley ● Battery Type
- MCB for protection from Input main.
Tall tubular inverter battery with rugged construction

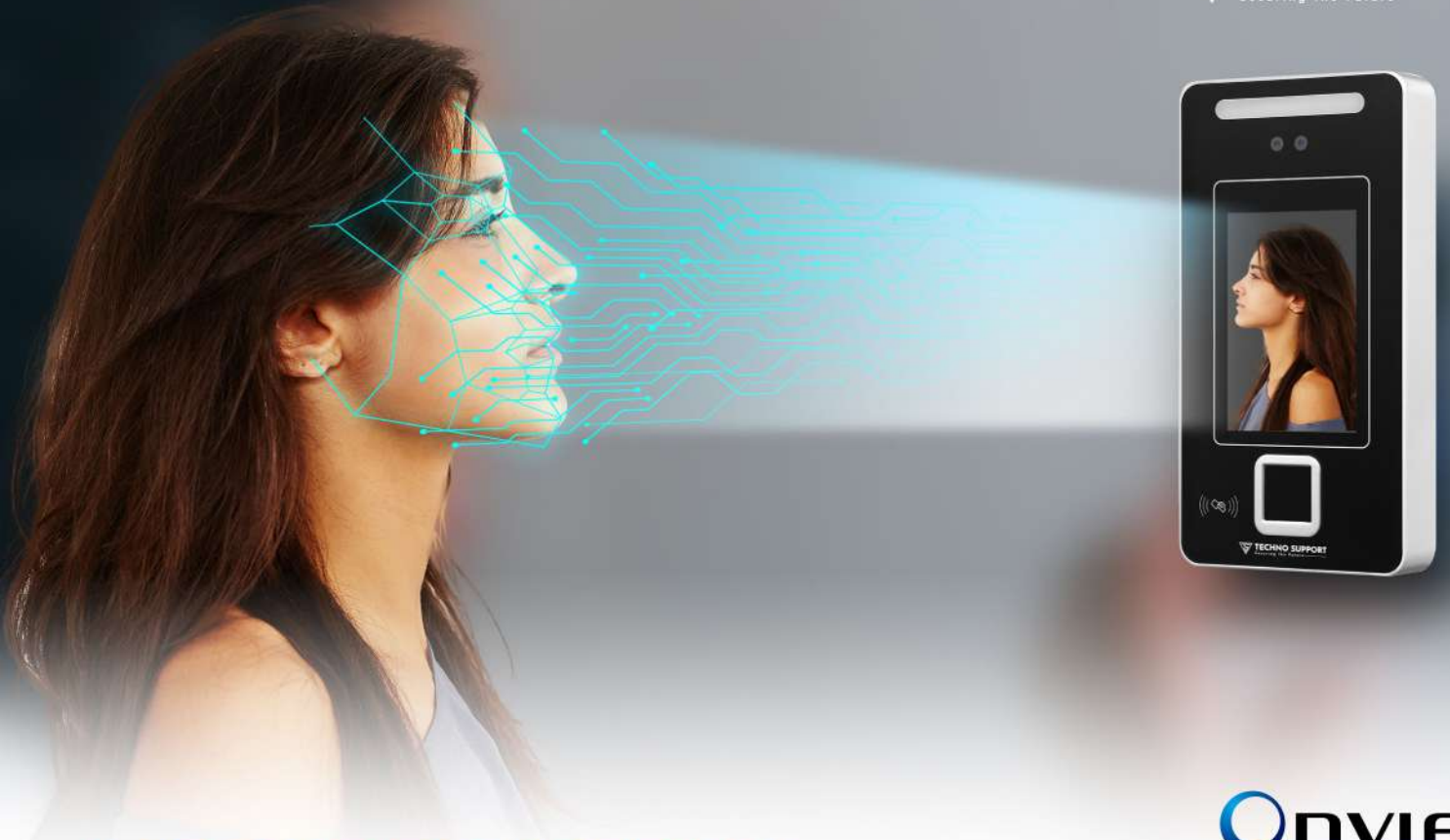


TS SOLAR INVERTER & BATTERY

- Battery Compatible with 1 solar battery of 150Ah
- Nominal Voltage 12V; C10 up to 10.5V at 27oC: 150 Ah
- Electrolyte Volume 20.6 Liter
- Inverter Type Pure Sine Wave solar hybrid Inverter with 80% efficiency & in-built PWM charge controller.
- Technology Power savings of 1.5 - 3 units per day with the help of Intelligent Solar Optimization Technique (ISOT), fast battery charging through i-Charge technology.
- BIS Certified TS Globe solar panels are BIS certified as per IS/IEC standards; Space Requirement - 20 sq. feet (approx.) for the single panel; Cables & Connectors - 1000mm length meter wire for a reliable connection.

IS 13252 (PART 1): 2010
IEC 60950-1 : 2005





AI FACE BIOMETRIC ATTENDANCE SYSTEM

TS -AI FACE 1500



Introducing our cutting-edge AI Face Biometric Attendance System, a revolutionary solution that redefines workforce management. Designed for seamless integration into diverse environments, this advanced system offers unparalleled accuracy and efficiency in tracking attendance.

FEATURES



FACIAL RECOGNITION TECHNOLOGY

Elevate efficiency with our rapid, contactless AI facial recognition for precise attendance tracking.



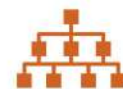
REAL-TIME MONITORING

Effortlessly track attendance patterns for valuable insights.



ADAPTIVE AI ALGORITHMS

This adaptability enhances accuracy and minimizes false positives or negatives.



MULTI-LEVEL SECURITY

Prioritize security with multi-level authentication protocols.

- Full Access Control Support
- P2P Cloud Support
- Face, Card & Password Support
- LAN/WiFi Support
- Voice Output Support
- Touch Screen Support
- User TimeZone Support
- Valid Date Range Support
- Antipass Support
- Wiegand I/O Support



SMART LOCK

TS-Smart Locks

Introducing Techno Support's Cutting-Edge Smart Lock: Your Gateway to Security Innovation! Our state-of-the-art lock combines advanced technology with sleek design, offering unparalleled protection for your space. With keyless entry, smart features, & robust encryption, embrace a new era of security. Elevate your safety standards with Techno Support – where innovation meets peace of mind.



Multiple Access Options



Mechanical Key Access



Emergency Power Supply



Lasting Battery Life

FEATURES

- Model No TSSDLB00348
- Biometric Finger Model TSBM00348
- OS Version Android 11.0
- CPU Model Mediatek
- CPU Speed 1.5ghz
- Ram/type 2 GB Rom/type 16 GB
- Screen Size 7 Inch
- Communication Wifi, 4g LTE, Bluetooth, USB, Micro USB, LAN
- Internal Modem 2G/3G/4G LTE
- Support Bands All Indian Sim Card
- Sim Port 2x2ff (Mini)
- USB Port Micro/mini/a Microsmx2 (Optional) Charger Port Dc 2.5mm
- Sensor A Ccelerometer
- Camera Front 5.0 Mp Auto Focus
- Battery Capacity 5600mah

THE FOREFRONT TEAM



Embarking on the Forefront Team project, Techno Support aims to empower ITI and Diploma college graduates by bridging the gap between skill development and employment. Through intensive training in diverse technical skills, our initiative focuses on making individuals proficient in repairing electronic devices and offering essential services like electric services, AC repair, and networking solutions. Beyond addressing unemployment, this project elevates local service delivery efficiency through a dedicated application. Our vision is to create over 10,000 job opportunities, fostering substantial revenue with minimal investment.



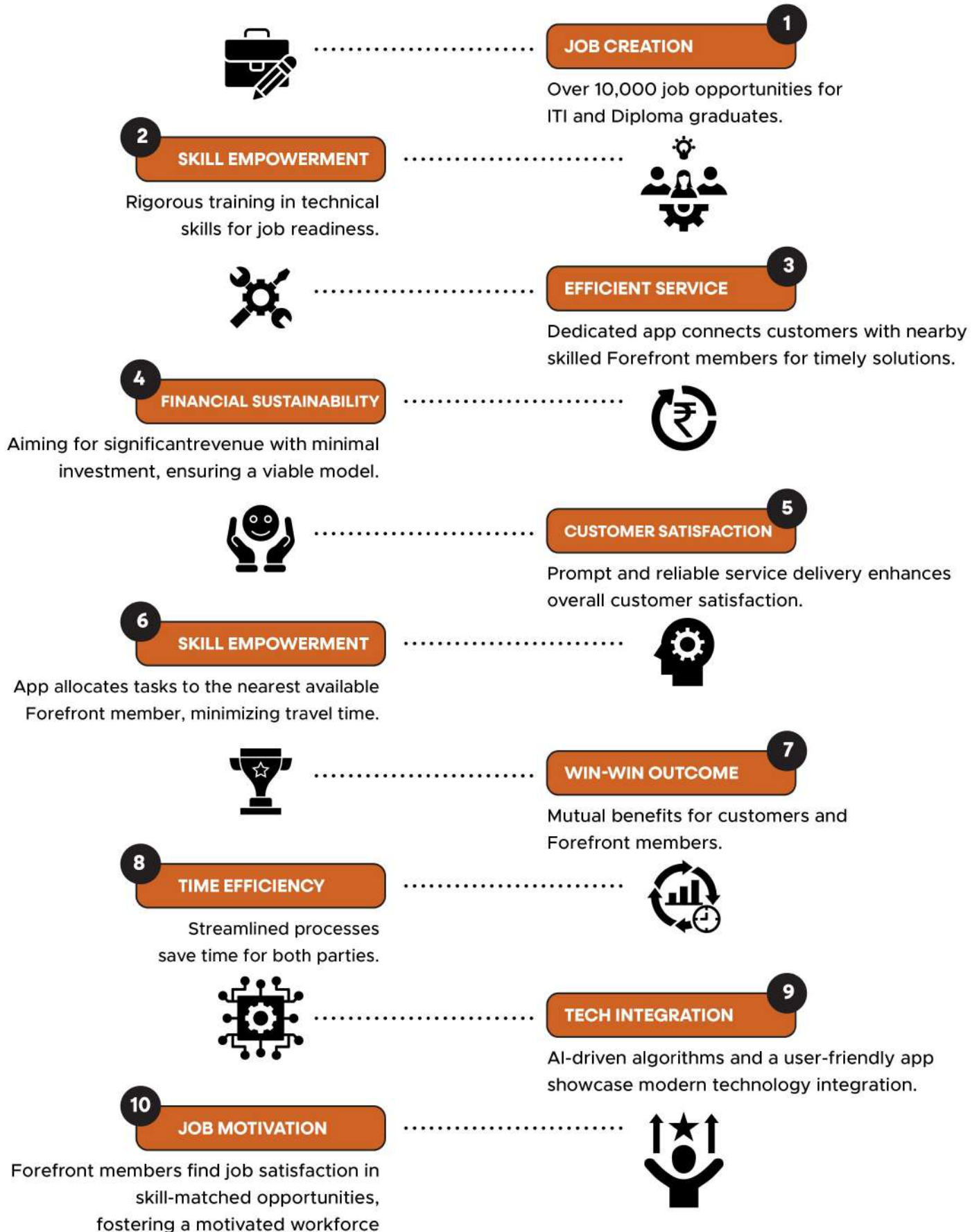
Techno Support has developed its own dedicated app to streamline the interaction between trained individuals, known as Forefronts, and customers seeking electronic device repair services. After completing the training, Forefronts register their names on the app, creating a network of skilled professionals ready to respond to service requests.

Here's how the app works: when a customer requires electronics repair, they submit a service request through the app. The app, driven by advanced algorithms, promptly accepts the request and identifies the nearest available Forefront member to the customer's location. If the first-choice member is unavailable, the app efficiently allocates the task to the second-nearest Forefront, ensuring that the customer receives timely service.

This dynamic system benefits both the customer and the Forefront member. Customers enjoy on-time and efficient service, while Forefronts gain job opportunities that match their skills and location. This approach not only enhances customer satisfaction but also optimizes the utilization of the Forefronts' expertise, leading to a win-win scenario.

The Forefront Team initiative by

TECHNO SUPPORT OFFERS NUMEROUS BENEFITS:



HOW DOES AI IMPROVE SECURITY?



1 DETECT AND DETER CRIME

TS AI Camera is our process of continually using humans to train AI enabled equipment. These training sessions make the security system better over time- spotting suspicious behavior, understanding the difference in sounds - such as glass breaking vs. a flag flapping and automatically triggering lights and sirens to scare off would-be thieves.



2 MONITOR WORKPLACE COMPLIANCE

AI enabled cameras can be trained to recognize when best practices are not being followed and alert the appropriate managers. Imagine having AI handle compliance checks for you -- the productivity and safety benefits are obvious.



3 DETECT AND MITIGATE HEALTH RISKS

AI can automatically count heads, determine whether or not people are staying six feet apart, and even determine if they're wearing masks. And, when paired with thermal imaging software, AI-enabled cameras can even identify people who are running "hot."

IS 13252
(PART 1): 2010
IEC 60950-1: 2005



R-81003000

SECURING TOMORROW

Integrating Technological Innovations for Safety, Surveillance, and Sustainability Across Departments and Environments.

Forest Department



Techno Support provides Forest Department solutions with CCTV, fire detectors, street lights, and solar panels.

Integrated technologies such as AI, Image Sensor Technology, LENS AND OPTICS ensure optimal performance.

Check Posts, Guest Houses, Watch Towers, Forest Boards, and Parks benefit, ensuring comprehensive security and resource efficiency.

Tourism Department



Elevate security with CCTV, fire detectors, and energy-efficient lighting in Museums, Forests, Falls, Palaces, and Historical Places.

Optimize performance with Thermal Management, Weather Resistance, and durable housing.

AI-driven security in Tourism ensures real-time monitoring and proactive threat detection for enhanced safety & visitor experience.

Home Department



The Home Department is pivotal for public safety, overseeing law enforcement and emergency management to ensure community security and well-being.

AI significantly enhances security in Jails and Police Stations by employing intelligent surveillance for real-time threat detection and automating alert systems, ensuring swift responses to potential risks and bolstering overall safety measures.

Smart Cities



Holistic Solutions: Techno Support offers a full suite of products, from CCTV to solar panels, addressing diverse Smart City needs.

Cutting-Edge Integration : AI, advanced sensors, optics, thermal management, and weather-resistant housing are seamlessly integrated for state-of-the-art Smart City solutions.

Our contributions drive efficient traffic control, robust city surveillance, and secure premium projects, fostering smarter and sustainable urban development.

TS SERVICES

Upon uncovering challenges within the realm of technical solutions and discerning unfair pricing practices in our surroundings, our team at TECHNO SUPPORT has taken a proactive stance to revolutionize the IT and security industry.

In response to these issues, we proudly introduce a comprehensive range of service packages tailored to meet diverse needs. These packages are meticulously designed to offer optimum solutions, ensuring a seamless experience for our valued clients. Explore the details below to discover the transformative possibilities within each service package:

● Basic Service	★ Advance Service	👑 Premium Service	👑 TS Extended Service
<ul style="list-style-type: none"> ✓ Service attending time within 5 days. ✓ Travel charges Applicable ✓ Service charges Applicable ✓ Material charges Applicable 	<ul style="list-style-type: none"> ✓ Service attending time within 3 days. ✓ Travel charges Included ✓ Service charges Applicable ✓ Material charges Applicable 	<ul style="list-style-type: none"> ✓ Service attending time within 2 days. ✓ Travel charges Included ✓ Service charges Included ✓ Material charges Applicable 	<ul style="list-style-type: none"> ✓ Service attending time within 2 days. ✓ Travel charges Included ✓ Service charges Included ✓ Material charges Included

SERVICE PACKAGES START FROM Rs. 249/-

Terms & Conditions

<p>a PRICES OF MATERIALS <i>depends on</i></p> <ul style="list-style-type: none"> • Quality of the material. • Quantity of the material. • Attached service package • Market availability • Delivery/working location • Additional features 	<p>b PRICES OF SERVICES PACKAGES</p> <ul style="list-style-type: none"> • Distance • Kind of workplace • No of technicians required • Types & Nos of tools required • Life of the package 	<p>c SPECIFICATIONS OF MATERIALS <i>depends on</i></p> <ul style="list-style-type: none"> • The model has different variants • Customized Products • According to the applications • Price segments • Availability of spares • Additions of features
---	--	--

OUR TEAM



InfiNite Arrow
We are the future

Partner in
Hardware &
Software development



TECHNO SUPPORT
Securing the Future

Partner in
Trading and Distribution



CDS
CREATIVE DESIGN STUDIO

Partner in
Branding and
Development



BMSG
BMSG ENTERPRISES LLP

Marketing Partner in
All Electronic Component

OUR COMMUNITY

- Gundal Enterprises
- Wee Bee Enterprises
- Newgene Security Solutions
- High-Tech Vision
- Energy Needs
- Solar Shoppee
- SG Computers
- TT Electronics
- Genesis Ventures
- Metro Computech
- Lotus Enterprises
- Super Vision

OUR OCCURRENCE





REACH US THROUGH

BANGALORE



Techno Support, Railway Parallel Rd, 4th Block, Kumara Park West, Sampangiram Nagar, Bengaluru, KA 560020



management@tsglobe.com



+91 - 8904562979, Toll Free No. : 1800 5690 555

VIJAYAPURA



Al-Ameen Medical College 2nd Gate Opposite, Siddharth Nagar Athani Road, Vijayapura -586108



+91 - 9900989967, Toll Free No. : 1800 5690 555



Info@tsglobe.com



www.tsglobe.com