



PALIWAL
& associates

ARCHITECTS | ENGINEERS | INTERIOR DESIGNERS | PROJECT MANAGERS



*Providing innovative solutions and
building the finest structures
with superior quality construction*

Industries we design & build for:

ELECTRONICS FACTORIES | AUTOMOBILE FACTORIES | PHARMACEUTICAL INDUSTRY
HEALTHCARE AND MEDICAL FACILITIES | MANUFACTURING UNITS | CHEMICAL INDUSTRY

ABOUT
**PALIWAL
& ASSOCIATES**

Paliwal and Associates is led by **Ar. Anil Paliwal** who is actively designing & co-designing in India & internationally for over 30 years. He has been associated with world renowned Architectural firms like RMJM (Scotland), Schuster Pechtold & Partners (Germany), WBTI & R.J. Crocker's & Partners (U.K.). He worked in Dubai, UAE for 20 years and set up his office in Noida, India in 2011.

With over three decades of expertise in India and Overseas, our firm specializes in creating functional and aesthetically pleasing spaces that reflect our client's visions. We ensure seamless execution of any project from concept to completion. We prioritize eco-friendly practices and cutting edge technology.

Our team comprises of extremely qualified and experienced individuals in the following segments

- Architects
- Structural Engineers
- Interiors Designers
- Project Managers
- MEP Consultants
- Site Supervisors

WE BELIEVE IN
transforming
dreams into
enduring
constructural
landmarks,
& setting new
standards in the
industry.

SERVICES
WE OFFER

Engineering

STRUCTURAL DESIGNING | SYSTEMS | INDUSTRIAL MATERIALS | ENVIRONMENTAL SCIENCE

Services

MECHANICAL | ELECTRICAL | PLUMBING
HVAC | FIRE FIGHTING | CLEAN ROOM

Industrial
Flooring

PVC FLOORING | EPOXY FLOORING | PU
FLOORING SELF LEVELLING | WATER PROOFING

Production
Support

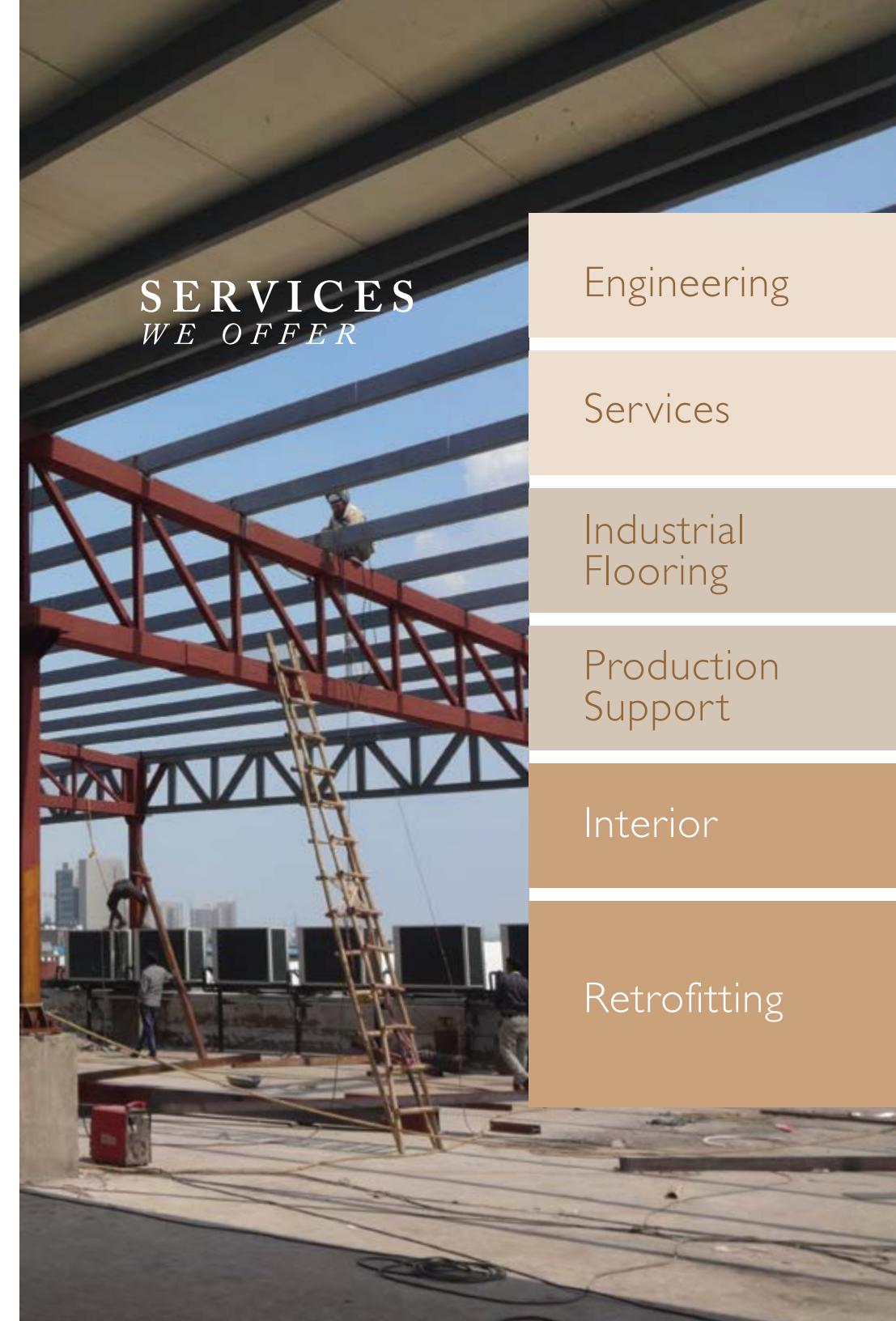
ESD PRODUCTS | ESD FURNITURE | STORAGE BAG
ESD TESTING EQUIPMENT | SHELVING SYSTEM

Interior

DESIGN CONSULTATION | WORKSTATIONS | CABINS
CONFERENCE ROOMS | WASHROOMS | CANTEENS

Retrofitting

INITIAL PLANNING | SURVEY & DESIGN | PROCUREMENT
INSTALLATION | COMMISSIONING | SCHEDULED
MAINTAINANCE | POST- RETROFIT EVALUATION
CONTINUOUS IMPROVEMENTS



Delivering **Excellence**



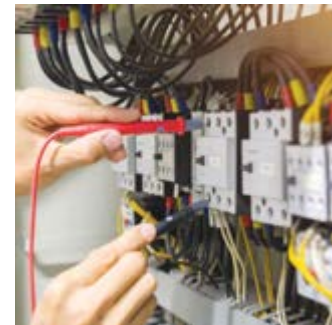
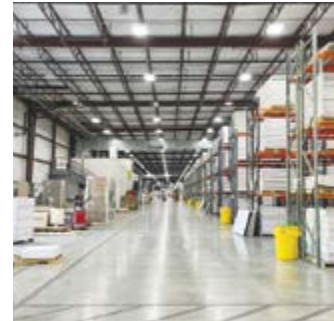
OUR
CLIENTS



MoShine Electronics Pvt. Ltd.



OUR
360 DEGREE
SOLUTIONS



- Construction
- Retrofitting
- Peb Structures
- Interior Space Design
- Cleanrooms
- Warehouse
- Electrical
- Electronics
- Hvac
- Medical Room
- Piping
- Laboratory
- Bms & Lss
- Equipments

CONSTRUCTION

We specialize into commercial and industrial buildings. It includes site preparation, foundation construction, erection of structural elements, installation of utilities, and interior finishing to create functional spaces for occupancy or use.

RETROFITTING

Through Retrofitting we upgrade existing structures or systems to improve performance, efficiency, safety, or compliance with current standards. It includes assessing needs, planning modifications, and implementing changes to enhance functionality and sustainability without complete reconstruction.

PEB STRUCTURES

Our PEB structures are fabricated using standardized components and methods off-site, then assembled on-site. We offer cost efficiency, faster construction,

and design flexibility for various applications such as warehouses, factories, and commercial buildings.

INTERIOR SPACE DESIGN
solutions to fulfill your specific environmental needs.

CLEANROOMS

Our team consists of experience architects & process expertise, we create plans specific to your process for a required critical environment and bring them to life.

WAREHOUSE

We ensure usage of maximum space utilisation while designing a warehouse facility. Strength of the structure and sufficient lighting is our main aim.

ELECTRICAL

Our team of talented MEP consultance ensure energy efficiency in the project's electrical system and ensure minimum maintenance and maximum safety.

ELECTRONICS

Our meticulous design prioritizes efficient workflow, ESD (electrostatic discharge) control, and advanced automation for optimal production outcomes.

HVAC

Our skilled technicians and mechanical engineers create tailored HVAC solutions to fulfill your specific environmental needs.

MEDICAL ROOM

Our Medical room design emphasizes accessibility, and functionality, integrating medical equipment, infection control measures, and patient comfort for effective healthcare delivery.

PIPING

Our practical experience with diverse piping and distribution products guarantees we design utilities that operate efficiently during peak demand.

LABORATORY

We design Laboratories focused on functionality and safety, incorporating modular layouts, specialized equipments and ergonomic workspaces to optimize research efficiency and user comfort.

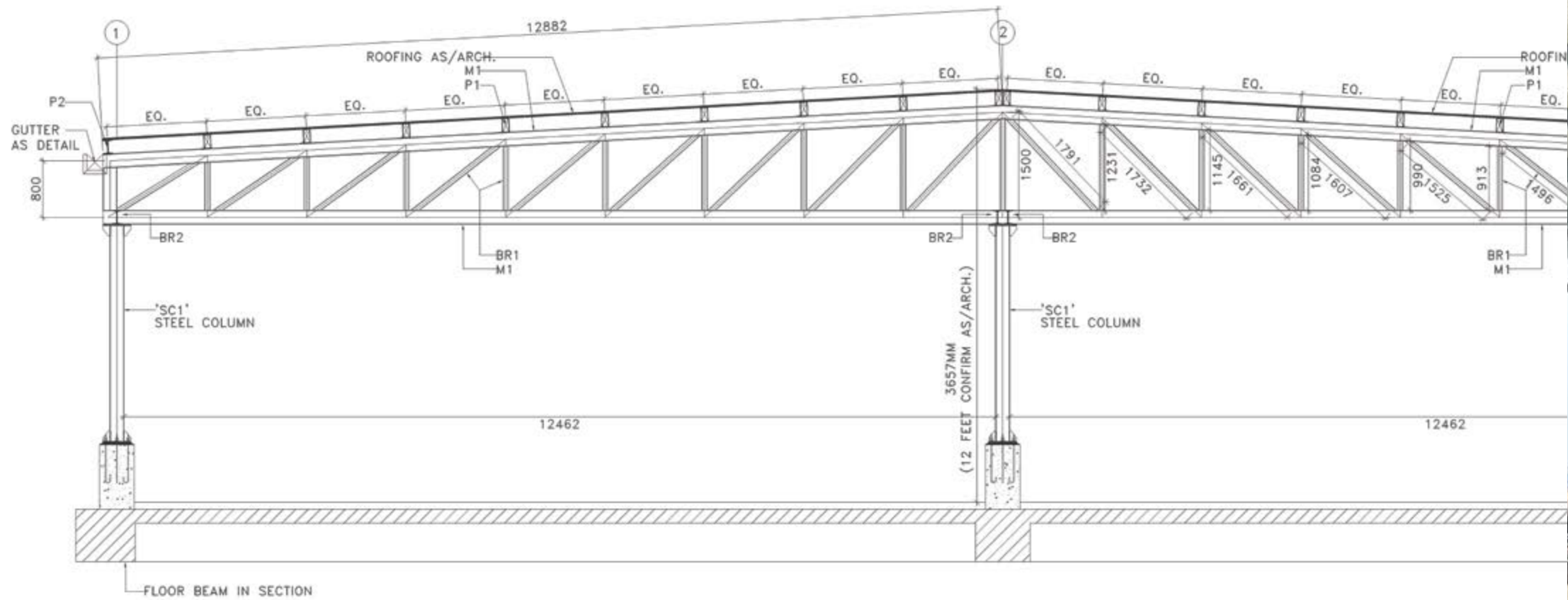
BMS & LSS

Our team incorporates SMART technology, providing you with constant control over your facilities and access to clear, downloadable data.

EQUIPMENTS

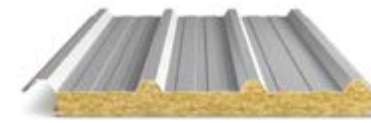
As a dedicated end-to-end solutions provider, we also supply a comprehensive range of cleanroom and other equipment to our customers.

Elevating
from Ordinary
to **Extra**
Ordinary





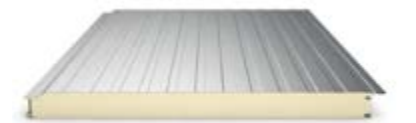
OUR
CLEANROOM
ACCESSORIES



GLASSWOOD PANELS



ROCKWOOL PANELS



PUF PANELS



AIR SHOWER



AIR CURTAIN



COLUMN CLADDING



VIEW GLASS



LIGHTS



2D AND 3D COVING



SLIDING DOOR



EMERGENCY DOOR



HIGH SPEED DOOR



MEDICAL DOOR



Interior spaces should speak of its time and place, but yearn for **timelessness.**



ESD MAT FLOORING

It is designed to help lessen the effects of an electrostatic discharge.

FLOORING

Our proficient engineers use well researched industrial flooring which are durable, resilient surfaces designed for high traffic environments like factories and warehouses. It withstands heavy machinery, chemicals, and abrasion while promoting safety, cleanliness, and operational efficiency.



ESD EPOXY FLOORING

They are highly recommended for explosive environment, electronic areas, chemical, pharmaceuticals and healthcare facilities

Redefining flooring excellence

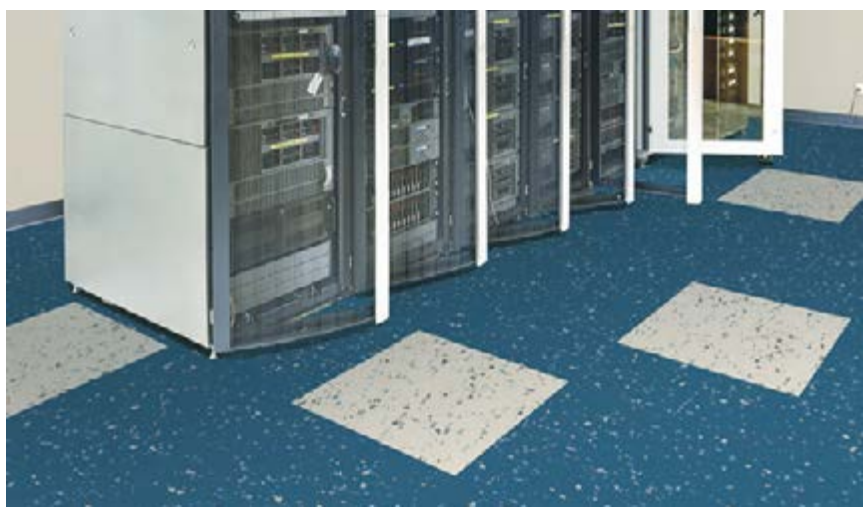
PU EPOXY FLOORING

Ideal for testing conditions such as heavy footfall, physical impact, extreme temperature and corrosive chemicals.



HOMOGENOUS FLOORING

It offers vibrancy and depth of color. They are made up of dissipative one-layer mix.



CERTIFIED ESD TILES FLOORING

It provide permanent static protection. Our tiles can withstand heavy loads and won't crack under pressure. No additives are ever needed.



EPOXY FLOORING

Ideal for warehouses, logical centers, industrial facilities and other areas where there is heavy fork lift movement.

SPACES

In all given projects we have designed and executed every required space be it exterior or interior with utmost precision. We have different skillful teams handling aspects like facade design, landscaping, structural design, building services and interior design respectively. With harmonised coordination we bring any project to hassle free completion with charismatic designs and impeccable finishes.

Greener, cleaner
technology
for an
environmental
friendly future.



ESD & LABORATORY FURNITURE



WASH BASIN



CHAIRS & STOOLS



WORK STATIONS



COUNTER TOPS



ESD CHAIRS



SS FURNITURE



CABINETS

Trust your
project in
our **expert &
skilled** hands



*Time is the greatest resource.
We understand that and we strive to
deliver in short timelines.*

architects



engineers



interior designers





project managers

DESIGN & BUILD | TURN KEY SOLUTIONS

Connect us at : +91 8130 47 8175

239-Lower Ground Floor, Sector 15A, Noida 201301, India

www.paliwalandassociates.com • contact@paliwalandassociates.com

 : Paliwal & Associates | India •  : Paliwal_and_associates