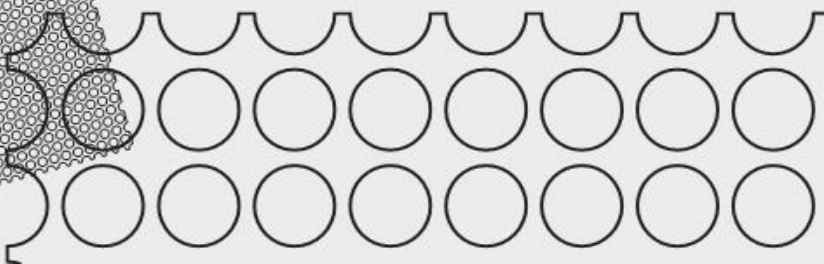
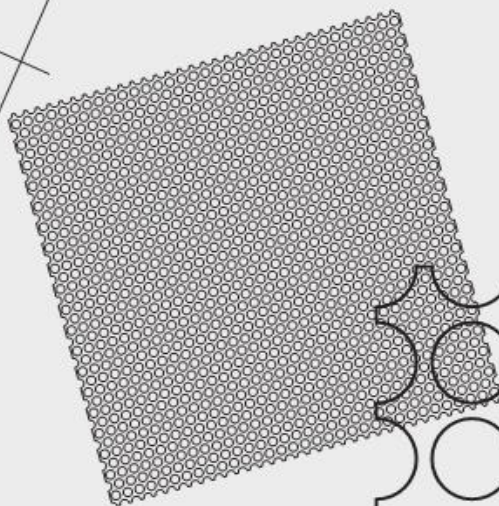
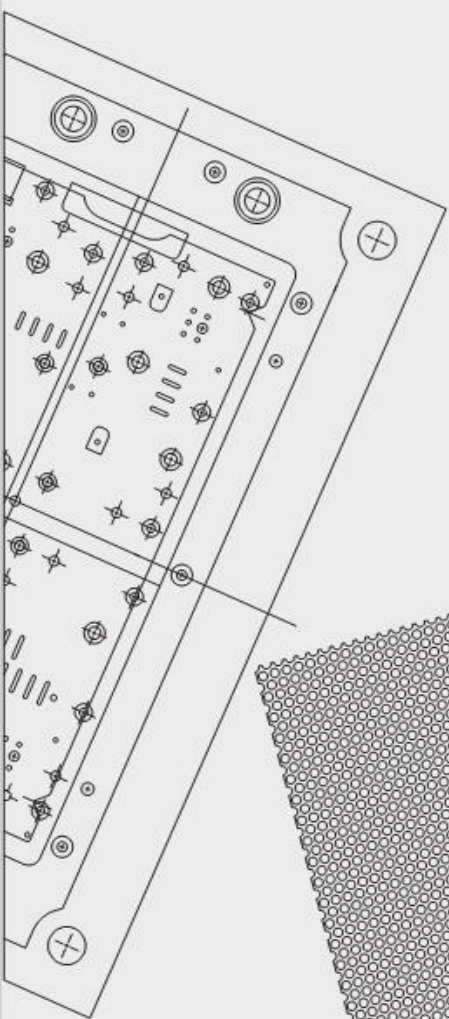


# MAG

ME  
SE  
RE  
OU  
P



INTRODUCTION...

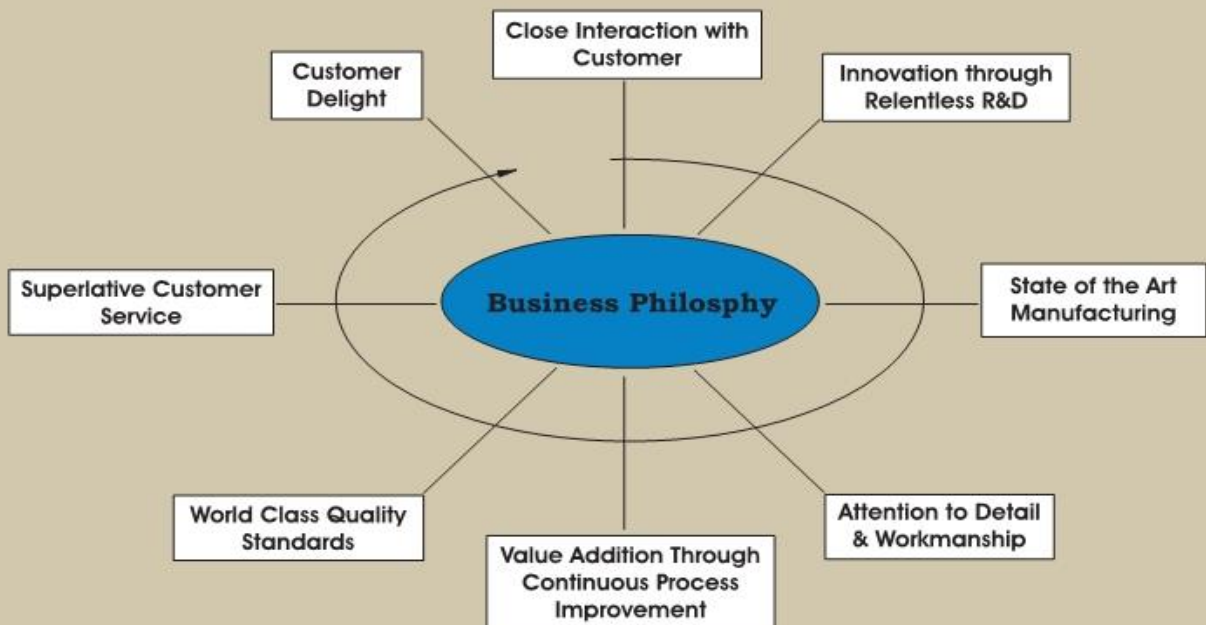
Established in 1982, the MPW Group of companies, is a privately held, family owned business, consisting of the flagship company, Master Pressing Works along with Mass Engineers and M' Innotech rounding up the group.



For almost 30 years, we have built a reputation as a high quality, cost-effective, long-term outsourcing partner/supplier of choice for decorative & structural components to most of the OEM's & Tier 1 suppliers in India.

**Mission Statement**

**“To capitalise on our unique synergistic blend of design, engineering and manufacturing skills to become the most preferred Supplier / Partner for customers seeking world class decorative trim and structural component manufacturing solutions globally.”**



Our firm belief and commitment to these attributes makes the MPW Group your ideal Supplier / Partner.

ABOUT US...

**Manufacturing Facilities**

- Manufacturing Facility #1 - MPW Unit I
- Manufacturing Facility #2 - MPW Unit II
- Manufacturing Facility #3&4 - Mass Enggs / M' Innotech

**Machinery & Equipment**

- Array of 18 Power Presses (10T to 200T)
- Array of 6 Hydraulic Presses (40T to 160T)
- Array of 12 Injection Moulding Machines (30T to 1200T)
- Woodstock Processing Equipment
- Adhesive Press Lamination Processing Equipment
- Conventional Tool Room Machinery
- Paint Shop
- Spot Welding Equipment
- Fabric/Vinyl/Leather Conversion Equipment
- Chemical Etching Plant
- Assembly Shops
- Testing Lab

**Value Added Services**

- Design Collaboration for Manufacturability
- In-house Tool Room
- Prototyping Services
- Assembly Services
- In-house Testing Services

**Computer Aided Design**

- Catia PLM
- Autodesk Product Development Suite



**MASTER PRESSING WORKS  
UNIT - I**



**Quick Facts**

Established: 1982

Employees: 25

Factory: 5,000 sq.ft. built on 6,000 sq.ft. of land

ISO 9001 : 2008 Certified



**MASTER PRESSING WORKS  
UNIT - II**



**Quick Facts**

Established: 2012

Employees: 10

Factory: 22,000 sq.ft. built on 20,000 sq.ft. of land

ISO 9001 : 2008 Planned



**MASS ENGINEERS**



**Quick Facts**

Established: 1990

Employees: 75

Factory: 15,000 sq.ft. built on 11,000 sq.ft. of land

ISO 9001 : 2008 Certified



**M' INNOTECH**



**Quick Facts**

Established: 2009

Employees: 15

Factory: 5,000 sq.ft. built on 5,000 sq.ft. of land

ISO 9001 : 2008 in Process

**Markets we Serve**

- Automotive
- Consumer Electronics
- Architectural

WHAT WE DO...

**Core Process Technology**

- Tool Design & Development
- Sheet Metal Stamping
- Injection Moulding
- Compression Moulding
- Adhesive Press Lamination
- Co2 / Spot Welding

**Finishing Process Technology**

- Spray Painting
- Powder Coating
- CED Coating
- Screen Printing
- PU Doming
- Chemical Etching
- Metal Finishing
- Cutting & Sewing

**Materials we Process**

- CRCA Steel
- Stainless Steel
- Aluminium
- Plastics
- Woodstock Composite
- Textiles / Fabrics
- TPU / PVC / TPO Foils

**Customers we Serve**

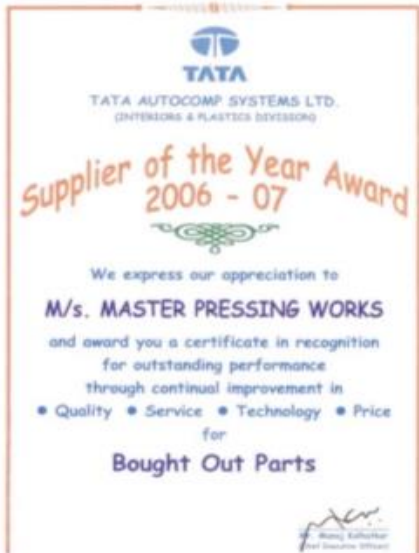
- Tata AutoComp Systems Ltd.
- International Automotive Components India
- Visteon Automotive Systems India
- Motherson Automotive Technologies & Engineering
- Mutual Industries Ltd.
- Supreme Industries Ltd.
- Abhijeet Plastics Pvt. Ltd.
- Minda Corporation
- Autoliv India
- Asahi Glass India
- Jabil Circuit India
- D&M (Phillips) India
- Cooper Standard India
- Godrej & Boyce

A HAT TRICK OF AWARDS !...

**Award: Supplier of the Year (BOP Category)**

**Customer: Tata AutoComp Systems Ltd.**

**Year: 2006-'07, 2008-'09 & 2009-'10**



**“We constantly strive to improve our systems so that our customers get their product when they need it, within the quality parameters both we and our customers demand.”**

## A RICH TRADITION OF INNOVATION...

**Metal Perforation**

Back in the early 80's, we pioneered the development of metal perforation in India, through innovative tooling and process technology.

An innovation which took us a long way in becoming one of the leading and most preferred supplier to all major Consumer Electronics & White Goods OEM's in India.

**Aluminium / Stainless Steel Chrome Trim**

We are the innovators and leaders in the development of Aluminium & Stainless Steel Trim for Automotive Interior & Exterior components, which is a cost effective as well as an eco-friendly alternative to 'Chrome Plating'.

This innovative technology has helped many of our customers to realize substantial savings in tooling cost, part cost (more than 40% in some cases). At the same time, most importantly, it has helped our customers achieve a major reduction in 'Time-to-Market'.



Stainless Steel Chrome Trim

Aluminium Chrome Trim

**Adhesive Press Lamination**

We have successfully developed the 'Adhesive Press Lamination' technology, through our relentless R&D efforts using innovative tooling and process technology.

This innovation gives our customers the option to laminate a hard moulded plastic part with fabric or vinyl leather for different variants by using the 'Press Lamination' technology.

That too, at a fraction of the cost as opposed to importing the technology from an overseas supplier.

**Illuminated Scuff Plate**

In the developed markets, most of the mid to high end vehicles are fitted with 'Illuminated Scuff Plates' as standard equipment.

We have successfully developed the manufacturing technology for the same, but are eagerly waiting for a suitable vehicle program in order to implement this technology, a classic case of being 'ahead to our times'.





**Ski Rack Ornament**  
 Verito

**Trunk Lid Trim**  
 Vento

**Rear Quarter Glass Chrome Trim**  
 Linea

**Weatherstrip Chrome Trim**  
 Linea

**Bottom Grille**  
 Linea  
 Punto  
 Indica e V2

**Rubrail Chrome Trim**  
 Indigo e CS  
 Sumo Grande  
 Aria  
 Xylo  
 Quanto

**Bumper Mounting Bracket**  
 Quanto

**Radiator Grille / Chrome Trim**  
 Indica V2  
 Indica e V2  
 Indigo e CS  
 Indigo Manza  
 Sumo Grande  
 Linea  
 Punto  
 Xylo

PRODUCT GALLERY...

AUTOMOTIVE EXTERIOR

**Front Bumper Top / Radiator Grille**

**Materials**

ABS  
Chrome Finish Stainless Steel

**Processes**

Injection Moulding  
Stamping  
Painting  
Chrome Plating  
Assembly



**Front Bumper Bottom Grille**

**Materials**

ABS  
CRCA Steel  
Chrome Finish Stainless Steel

**Processes**

Injection Moulding  
Stamping  
CED Coating  
Painting  
Chrome Plating  
Assembly



**Door Rubrail Chrome Insert**

**Materials**

Chrome Finish Stainless Steel

**Processes**

Stamping  
Assembly



**Ski Rack Chrome Ornament****Materials**

Chrome Finish Stainless Steel

**Processes**Stamping  
Assembly**Rear Quarter Glass Chrome Trim****Materials**

Chrome Finish Stainless Steel

**Processes**Stamping  
Injection Moulding & Painting  
Assembly**Rain Hat Cover Assembly****Materials**

PP

**Processes**Injection Moulding  
Assembly**Trunk Lid Cover****Materials**

PP

**Processes**

Injection Moulding

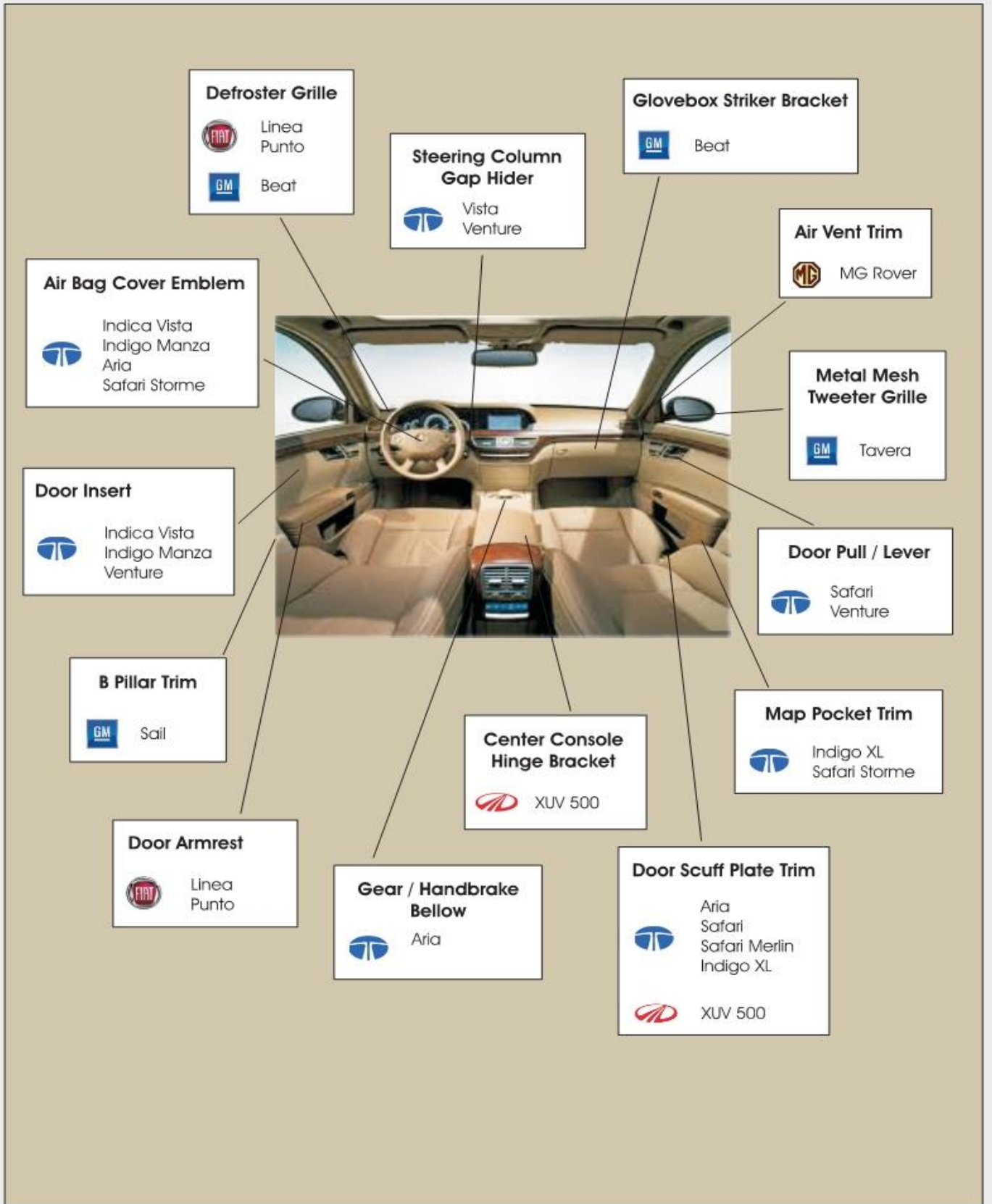
**Bumper Mounting Bracket****Materials**

CRCA Steel

**Processes**Stamping  
Spot Welded Assembly  
CED Coating

PRODUCT PORTFOLIO...

AUTOMOTIVE INTERIOR



## PRODUCT GALLERY...

## AUTOMOTIVE INTERIOR

**Door Scuff / Sill Plate Trim****Materials**

PP  
 Chrome Finish Stainless Steel

**Processes**

Injection Moulding  
 Stamping  
 Chemical Etching  
 Assembly

**Driver Air Bag Cover Emblem****Materials**

Chrome Finish Aluminium

**Processes**

Stamping  
 Screen Printing  
 Clear Coating  
 PU Daming

**Air Vent Bezel Trim****Materials**

Chrome Finish Aluminium

**Processes**

Stamping

**Speaker / Tweeter Grille****Materials**

CRCA Steel

**Processes**

Perforation  
 Stamping  
 Painting



PRODUCT GALLERY...

AUTOMOTIVE INTERIOR

**Fabric Laminated Door Insert Trim**

**Materials**

PP  
Foam Backed Fabric

**Processes**

Injection Moulding  
Adhesive Press Lamination



**Moulded Door Insert Trim**

**Materials**

PP

**Processes**

Injection Moulding



**Fabric Laminated Door Armrest Trim**

**Materials**

Woodstock Composite  
Foam Backed Fabric / Vinyl

**Processes**

Compression Moulding



**Fabric Laminated Map Pocket Trim**

**Materials**

PP  
Foam Backed Fabric

**Processes**

Injection Moulding  
Adhesive Press Lamination



## PRODUCT GALLERY...

## AUTOMOTIVE INTERIOR

**Moulded Defroster Grille Trim****Materials**

PC / ABS Alloy

**Processes**

Injection Moulding

**Moulded Dashboard Insert Trim****Materials**

PC / ABS Alloy

**Processes**

Injection Moulding

**Ash Tray Assembly****Materials**

Galvanised Steel

Bakelite

**Processes**

Stamping

Thermoset Moulding

Plating

Powder Coating

Assembly

**Glove Box Striker Bracket****Materials**

CRCA Steel

**Processes**

Stamping

CO2 Welded Assembly

Zinc Plating



PRODUCT GALLERY...

CONSUMER ELECTRONICS

**Metal Perforated Speaker Grille**

**Materials**  
CRCA Steel

**Processes**  
Perforation  
Stamping  
Painting



**LCD TV Panel Mounting Bracket**

**Materials**  
CRCA Steel

**Processes**  
Stamping  
Painting



**DVD Top Cover**

**Materials**  
CRCA Steel

**Processes**  
Stamping  
Painting



**DVD Enclosure Set**

**Materials**  
CRCA Steel

**Processes**  
Stamping  
Painting  
Screen Printing

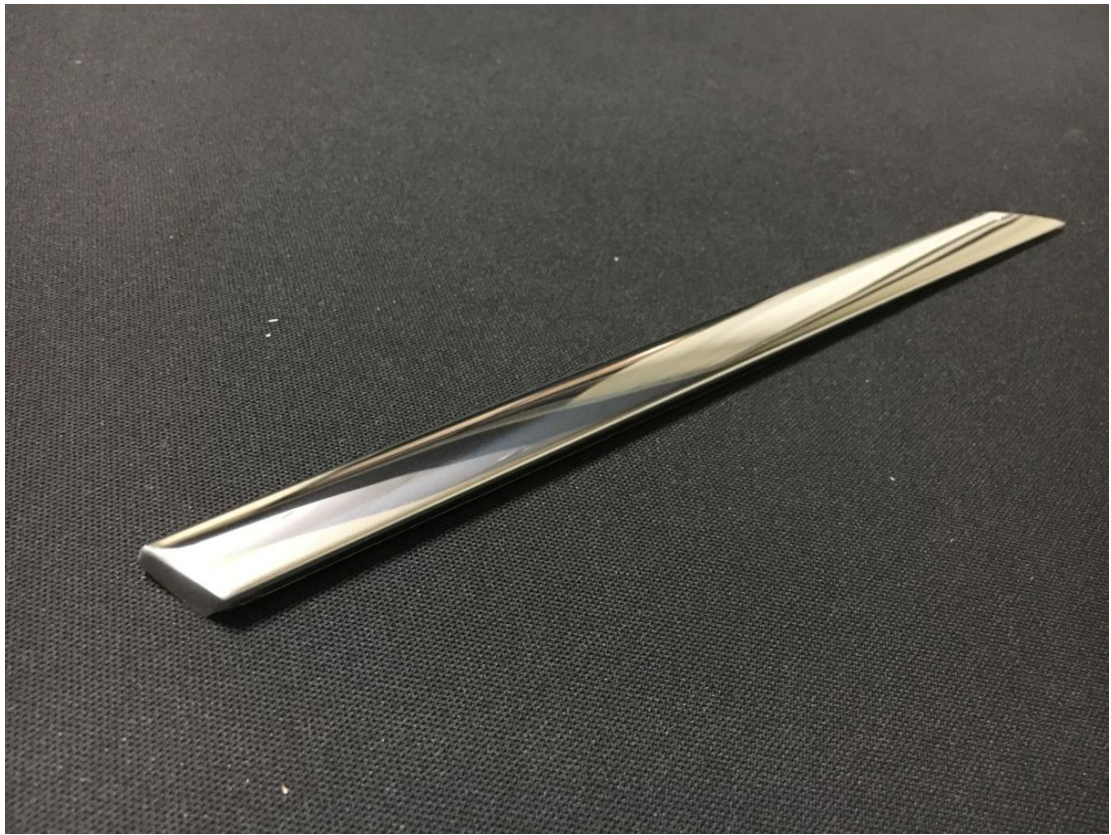


STATE OF THE ART MANUFACTURING FACILITIES...

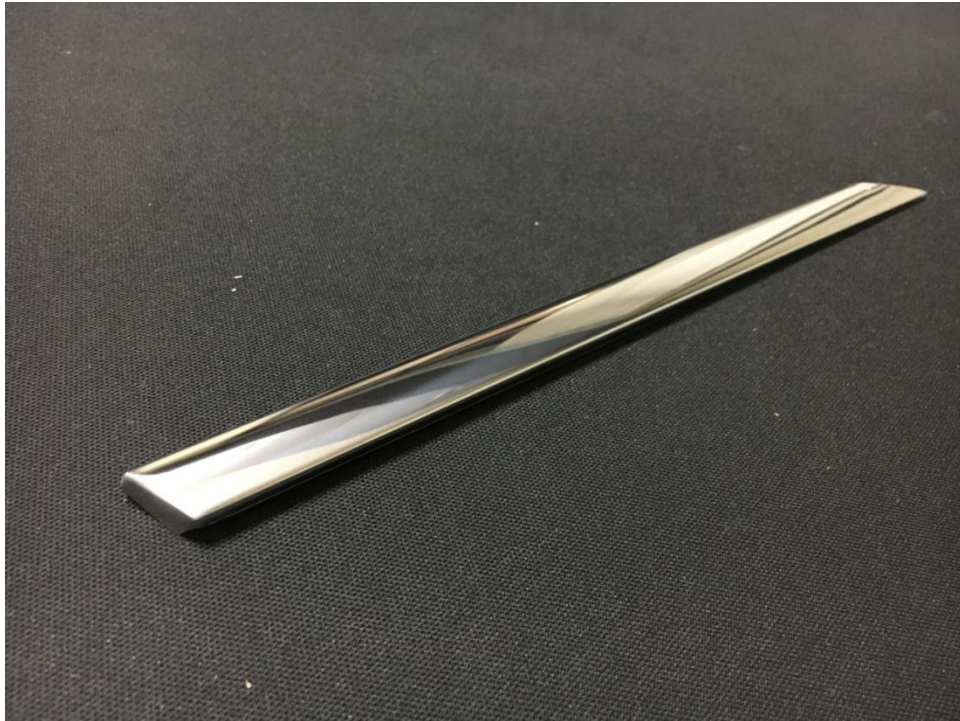


# **Exterior Metal Trims Projects**

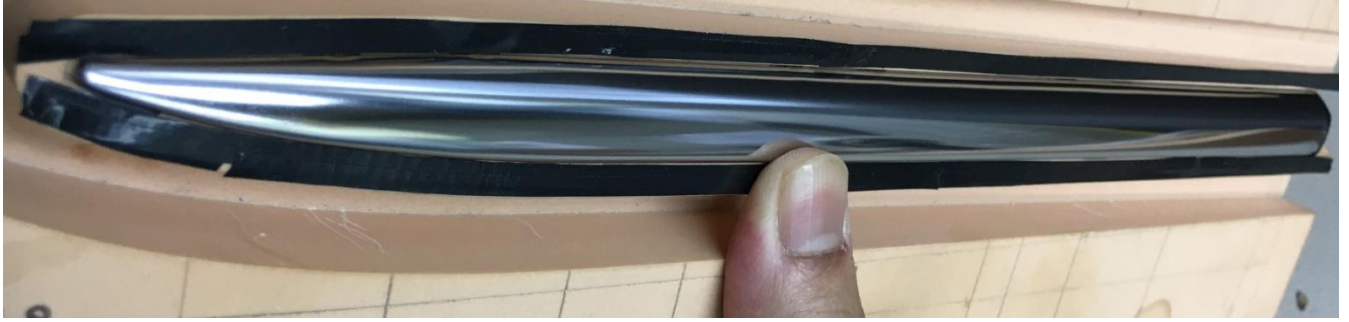
# Ford EcoSport SUS Front Quarter Glass



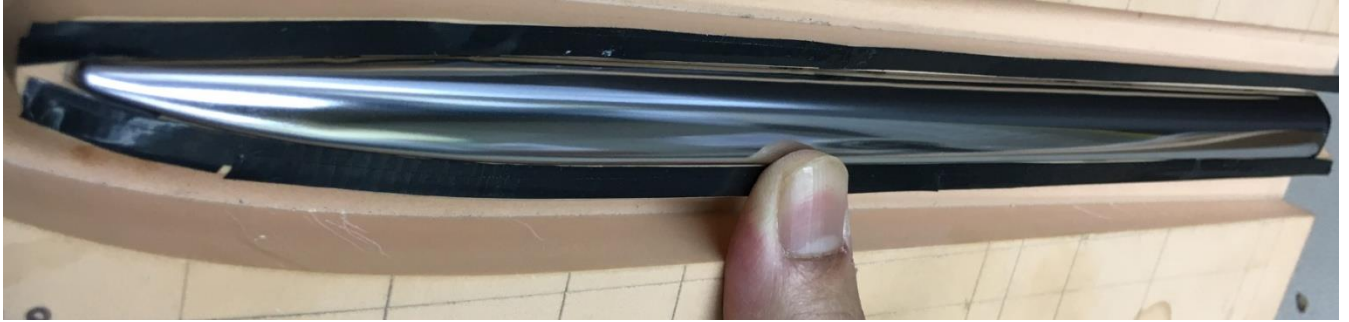
# Ford EcoSport SUS Front Quarter Glass



# TKML Toyota Innova Crysta SUS Front & Rear Quarter Glass



# TKML Toyota Innova Crysta SUS Front & Rear Quarter Glass



# TKML Toyota Innova Crysta SUS Front & Rear Quarter Glass



# Mahindra Scorpio Front Grille



# Tata Indica 1<sup>st</sup> Generation Front Grille



# Tata Indica 2<sup>nd</sup> Generation Front Grille



# Tata Vista Generation Front Grille



# Fiat Linea Rear Quarter Window



# Nano Ring Air Vent Metal Trim



# SUS scuff plates



**ILLUMINATED  
SCUFF PLATES**



# MPWG

M P W  
G R O U P

**MPW GROUP (HEAD OFFICE)**  
**MASTER PRESSING WORKS (UNIT - I)**  
J -277, J Block,  
MIDC, BHOSARI,  
PUNE - 411026, MH, INDIA.  
+91.20.30681199.OFFICE  
+91.20.30681196.TELEFAX  
info@mpwgroup.co.in

**MASTER PRESSING WORKS (UNIT - II)**  
C-12-13(17), T Block,  
MIDC, BHOSARI,  
PUNE - 411026, MH, INDIA.  
+91.20.30681199.OFFICE  
+91.20.30681196.TELEFAX  
info@mpwgroup.co.in