

**Think Semi**  
**Infotech Pvt Ltd**

AN IATF 16949 CERTIFIED COMPANY  
**WE BREATHE TECHNOLOGY**

*Your Partner for Quality Electronic  
Products Manufacturing*

## TURNKEY ELECTRONICS MANUFACTURING SERVICES

Turnkey PCB solutions | Wire Harness & Cable Assembly  
| Electronics Components Distribution



[www.thinksemiinfotech.com](http://www.thinksemiinfotech.com)





**State of art manufacturing facility with high accuracy automated machines and skilled labour force**



**Build up facility is 55000 Sq. ft situated at SIPCOT IT Park, Siruseri Chennai India**



**Manufacturing capabilities with international quality standards certified for quality management systems**



## **Vision**

Our goal is to become the world's top EMS provider of high-quality products and services for our business partners, with a zero rejection ratio.

## **Mission**

To implement a continuously improving state-of-the-art facility equipped with high-precision technology machinery and a team of multi-skilled engineers. Our goal is to bridge the market requirements for B2B in terms of Supply, Quality, Delivery, and Cost (SQDC) while adhering to international standards, thus ensuring the delivery of high-quality products and services.

## **Quality Policy**

THINK SEMI INFOTECH PVT. LTD. is dedicated to meeting customer satisfaction by timely delivering high-quality electronic components in accordance with all relevant requirements, while meeting the needs and expectations of our customers.

We achieve this by

- \* Implementing an effective Quality Management System
- \* Involving all multiskilled employees in continual improvement efforts.

# ORGANIZATION GROWTH

Founded  
Think Semi infotech pvt ltd  
in Saidapet, Chennai, India

Established EMS unit in  
Perungudi industrial estate,  
Chennai, India

Branch office at  
Hong Kong

Launched Think semi  
info tech Pte limited  
in Simlin tower  
Singapore

Started regional  
office at  
Bangalore, India

Bonded office  
set up at  
Shenzhen China

Annual Turn  
over in Million  
USD 5.7

Corporate HQ and  
Manufacturing facility for  
EMS and Wiring harness in  
Siruseri, Sipcot IT Park,  
Chennai, India



2016

2017

2018

2019

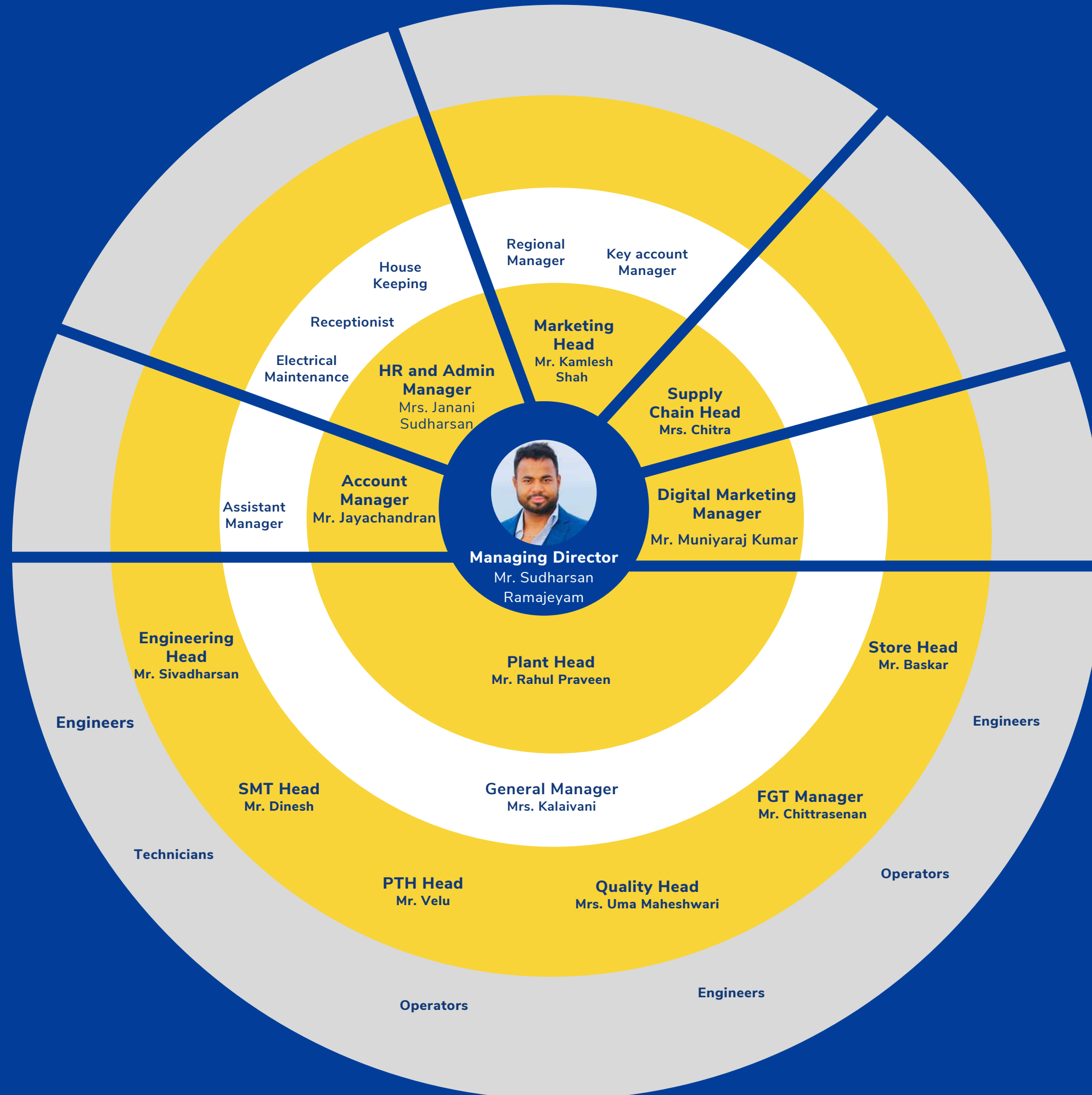
2020

2021

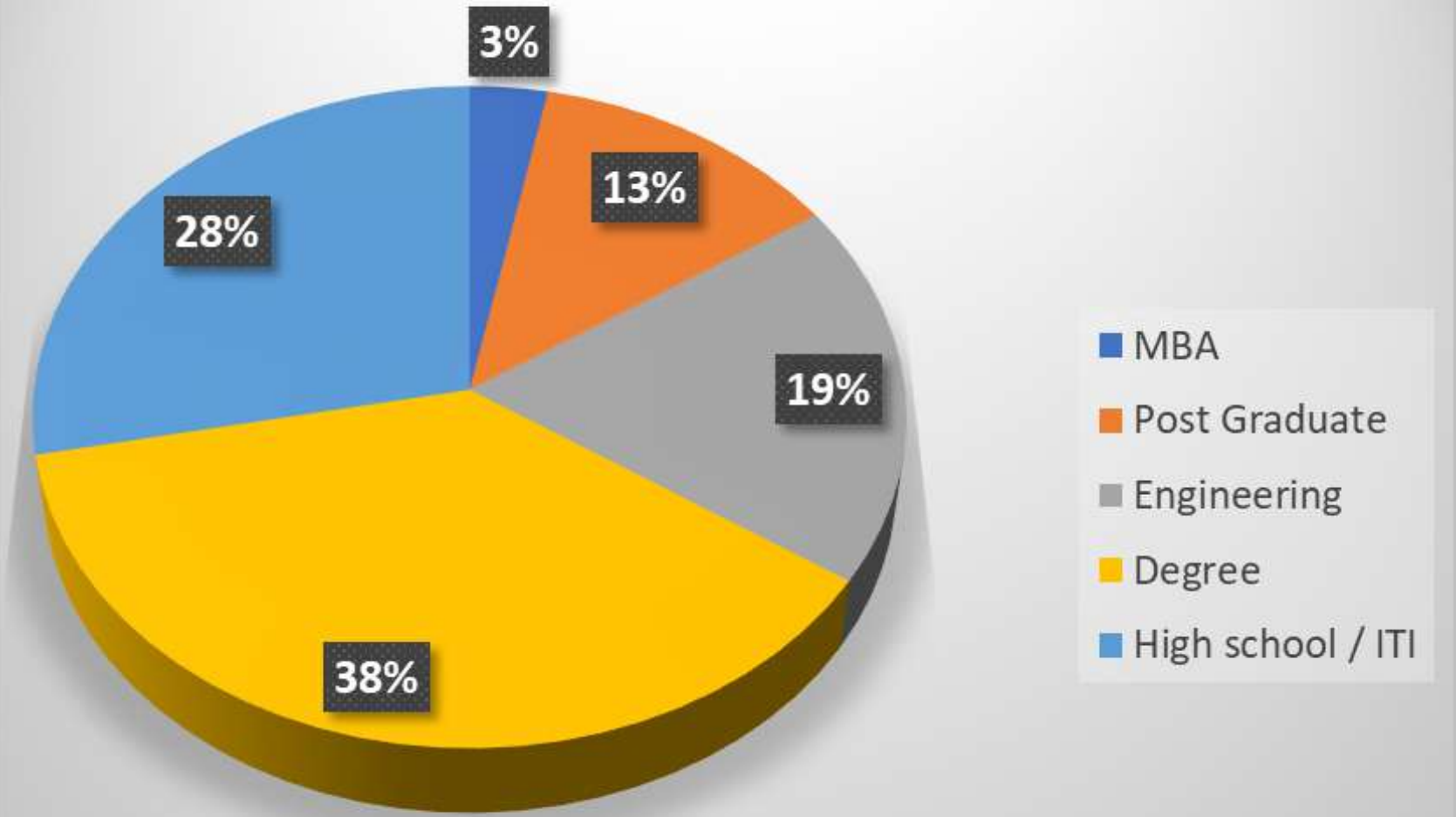
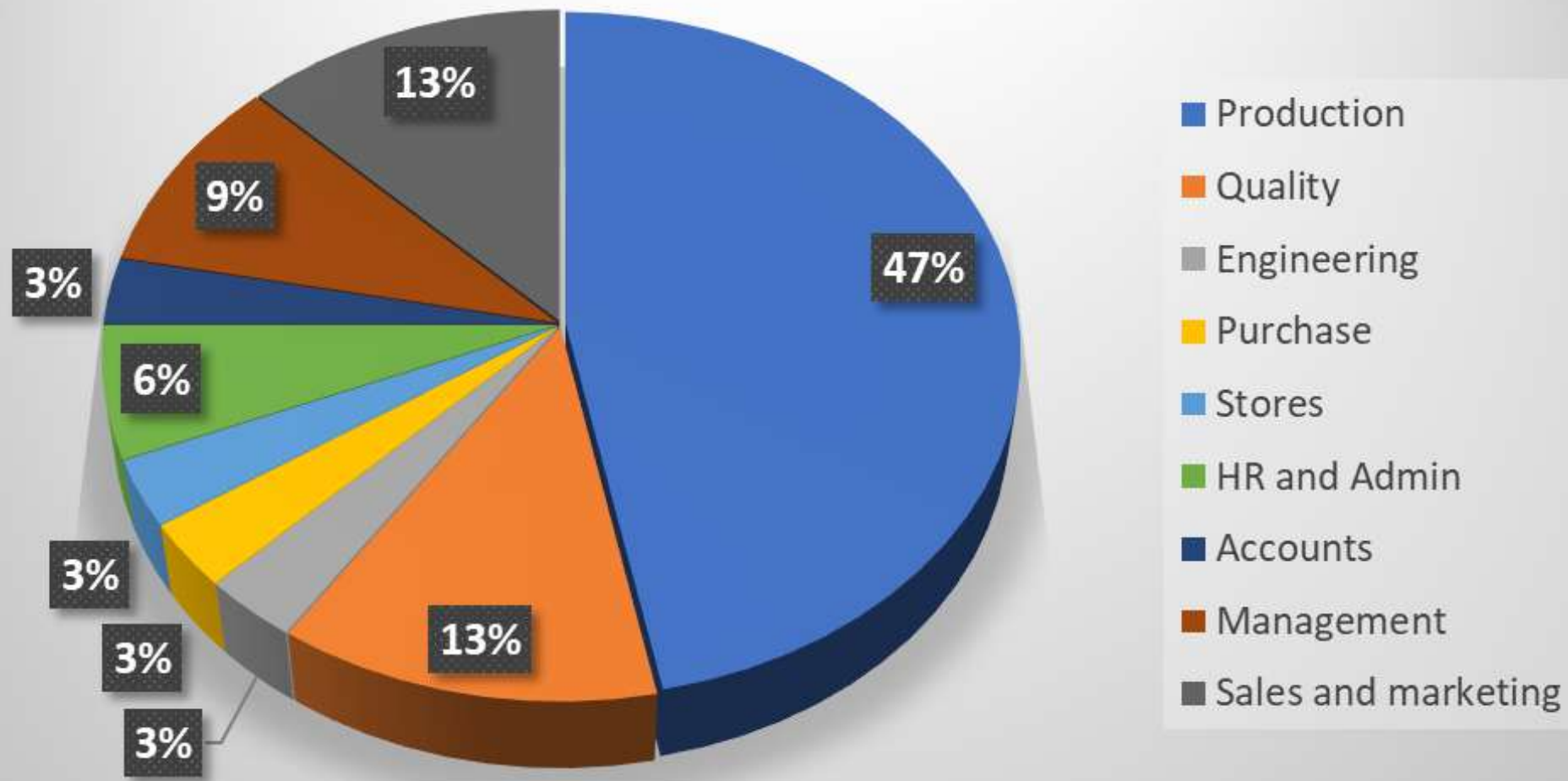
2022

2023

# ORGANIZATIONAL STRUCTURE



# RESOURCE DISTRIBUTION

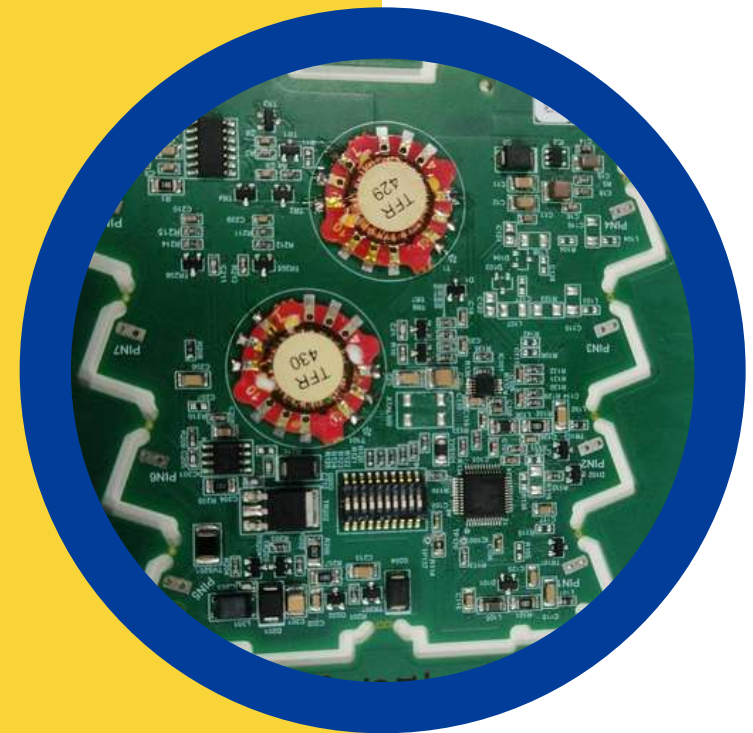


# OUR SERVICES

---

## PCBA PROTOTYPING

Our quick prototyping facilities cater to both established and emerging companies, enabling them to prototype high-tech products. We recognize the significance of speed and efficiency in introducing new products to the market, and thus, we streamline the prototyping process to expedite the time-to-market for our clients.



## PCB ASSEMBLY

Our manufacturing facility is equipped with state-of-the-art production facilities that enable us to meet our clients' requirements. Our PCBA assembly team is widely acknowledged as a leader in the industry and is dedicated to leveraging the latest technology to deliver tailored solutions to our customers.



## TESTING

We offer PCBA assembly testing services that guarantee the quality and performance of your electronic products. Our skilled technicians utilize cutting-edge testing methods like AOI (Automated Optical Inspection), ICT (In-Circuit Testing) and FCT (Functional Circuit Testing) to ensure the functionality and dependability of PCBA boards.



## QUALITY CONTROL

We recognize the significance of quality control in guaranteeing that our clients' electronic products meet stringent standards of quality and dependability. Our team of seasoned technicians adheres to rigorous quality control protocols during the PCBA assembly process to ensure that all components are accurately positioned, soldered, and tested.

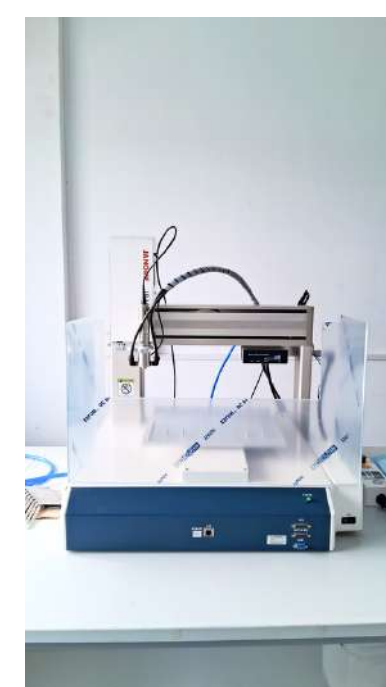


# MANUFACTURING FACILITIES



- State of art manufacturing facility with high accuracy automated machines and multi skilled labor force
- Build up facility is 55000 Sq. ft situated at SIPCOT IT Park, Siruseri Chennai India
- Facility set up is completely ESD protected enhancing reliability of the products
- Low cost of innovation, manufacturing and high operational efficiency with capability of 2 lakh CPH
- Use of advanced technology and latest generation SMT machines such as Screen printing, 3D SPI, Pick and place, reflow oven, Automatic optical inspection, Wave soldering , In-circuit tester, conformal coating machine, PCB router
- Minimum size of chip package type that can be mounted on PCB is 0201 and maximum height of SMT component that can be mounted on PCB is 25 mm
- PCB thickness range from 0.5mm to 6mm with capability to handle upto 64 layers
- Minimum gap between the balls in BGA component that can be mounted on PCB is 0.125mm
- Manufacturing capabilities with international quality standards certified for quality management systems and automotive standards
- 100 % product testing with qualified engineer from quality control team
- Localization of supplier base to cater the needs of high demand with shortest lead time deliveries.
- Cost competitiveness in terms of labor and stability in prices of raw materials supply
- Efficient utilization of space with 5000 Sq. ft to handle large volume of inward and dispatching finished goods
- Part location and inventory accuracy greater than 99.99% with safety stock levels maintained round the clock
- Shipment of goods across PAN India with enhanced customer satisfaction with on time deliveries





**PCB Assembly Area**  
30,000 Sq.ft

**RM / FG Storage Area**  
5000 Sq.ft

**Administration Area**  
2400 Sq.ft

**Build Area**  
50,000 Sq.ft



## **ADVANCED TECHNOLOGY AND LATEST GENERATION SMT MACHINES**

- **Screen printing**
- **3D SPI (3D Solder Paste Inspection)**
- **Pick and place capability is 2 lakh CPH**
- **16 Zone Reflow Oven with thermal profiler**
- **Inline 2D Automatic Optical Inspection (AOI)**
- **2D X ray machine**
- **Wave soldering (Dual Jet Wave Technology)**
- **Offline In-circuit tester (Japan)**
- **Conformal coating machine (Japan)**
- **PCB router (Japan)**





**STATE OF ART MANUFACTURING FACILITY WITH HIGH ACCURACY  
AUTOMATED MACHINES AND SKILLED LABOUR FORCE**



**2 LAKH CPH CAPABILITY SMT PICK AND PLACE MACHINE**

# SMT LINE MACHINES



**STENCIL PRINTER- MPM  
MOMENTUM II 100**



**CONVEYER 1**



**3D SPI –  
KOHYOUNG KY8030-2**



**CONVEYER 2**



**PICK AND PLACE-  
YAMAHA YSM20R**



**CONVEYER 3**



**REFLOW OVEN -  
VITRONICS SOLTEC 820 A**



**INLINE 2D AUTOMATIC  
OPTICAL INSPECTION**

- Newly designed cover set with larger window and wider access inside the printer.
- Quick release squeegee for faster changeover.
- Adjustable stencil shelf for flexibility handling board varieties.
- New jar paste dispenser for increased productivity.
- Solder paste roll height and paste temperature monitoring for yield improvement and traceability.
- Upgraded Benchmark GUI with customizable production page and QuickStart program.
- Rapid clean and closed loop for SPI print optimizer

- Best-in Class measurement Accuracy & Inspection Reliability
- Solves shadow problem by utilizing 2-way Projection.
- Accurate Inspection data with real time PCD warp compensation
- Provides User – Friendly Software Interface.
- KSMART Solutions: Full 3D Measurement based Process Control Systems
- Real time process optimization through powerful SPC analytics
- Powerful analysis for Real time print process Optimization

- Mounting capability 95,000 CPH Champion 66,000 CPH IPC9850
- Maximum feeder counts 140 fixed/ 128 Feeder exchange system & Feeder carriage exchange
- High-speed multi-purpose head (10 nozzles) & Flexible multi-purpose head (5 nozzles)
- It supports large PCBs up to L810 x W490mm (dual-stage, single-lane conveying of single PCB)
- Blow station – Automatic blow cleaning function for nozzles
- Side view function – detects pickup status and component presence with no downtime loss
- High level of mounting quality - mounting accuracy level of  $\pm 0.035\text{mm}$  ( $\pm 0.025\text{mm}$ )
- SATS30NS Auto Tray Sequencer (ATS) for nonstop tray replacement

- Industry-leading Thermal Performance
- Cathox Flux Filtration System
- Dual Lane w/Independent Lane Speed Control
- Fast Cool Down
- New Air Flow System
- Easily Removable Exhaust Box with Temperature and Pressure Monitoring

# PROCESS FLOW



Incoming Inspection



PCB Loader



Screen Printer



Link Conveyor



3D SPI Inspection



Link conveyor



PCB Unloader



Automatic Optical Inspection (AOI)



Cooling Conveyor



Reflow Oven



Link Conveyor



Pick and Place



Automated X-ray Inspection



Manual Insertion



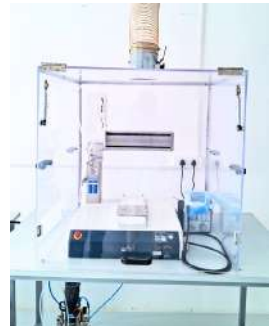
Wave Soldering



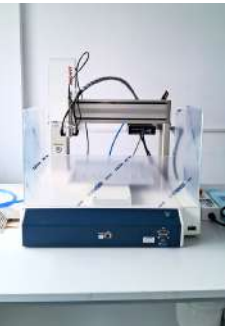
Quality Inspection



In-Circuit Tester (ICT)



Conformal Coating



PCB Depaneling



Packing and Dispatch

# MANUAL & THROUGH HOLE PCB ASSEMBLY





- OUR THROUGH-HOLE PCB ASSEMBLY SERVICES COMBINE BOTH MANUAL AND AUTOMATED TECHNIQUES.
- OUR SKILLED TEAM EXCELS IN HANDLING COMPLEX ASSEMBLIES, ENSURING PRECISION AND QUALITY.

# INSPECTIONS & TESTING





- IN-LINE 2D AUTOMATIC OPTICAL INSPECTION (AOI)
- AUTOMATED X-RAY INSPECTION (XAI)
- OFFLINE IN-CIRCUIT TESTING (ICT)

**Inventory of over  
100k+ in-stock  
components**





**OUR 'HANDS-OFF SOURCING' SERVICE IS DESIGNED TO STREAMLINE YOUR PROCUREMENT PROCESS. WITH A VAST INVENTORY OF OVER 100K+ IN-STOCK COMPONENTS, WE ELIMINATE THE NEED FOR YOU TO WORRY ABOUT THE COMPLEXITIES OF PARTS SOURCING. THIS NOT ONLY SAVES YOU VALUABLE TIME AND HASSLE BUT ALSO SIGNIFICANTLY REDUCES YOUR OPERATIONAL COSTS.**

# Quality Assurance

- IQC/Supplier Assessment
- Supplier Grade Evaluation
- Supplier Improvement Feedback System(CAR)

## Supplier Quality Management

## Process Quality Control

- Material Confirmation
- Product/Process Audit
- ECN Implementation
- ESD Management
- Process Capability Monitor- CPK 1.5

## Testing Equipment Calibration Management

- Dedicate calibration personnel
- Periodical calibration schedule



## Customer Service

- Customer Satisfaction Survey: twice/per year
- Customer Complaint: preliminary response within 24 hrs, Complete CAR within 7 working days

## Outgoing Quality Control

- OQC visual and functional testing
- ICT and FCT testing

## Quality Management System

- Implementation of IATF 16949: 2016
- Implementation of ISO 13485:201

# Quality Management System

THINKSEMI INFOTECH - YOUR TRUSTED IATF 16949 AND ISO 9001:2015 CERTIFIED PARTNER

Thinksemi Infotech has successfully achieved both IATF 16949 and ISO 9001:2015 certifications, making us a leading provider of top-notch electronic solutions, with an unwavering commitment to quality and customer satisfaction.

**IATF 16949 Certification:** As an IATF 16949 certified company, we have undergone rigorous assessments and demonstrated our commitment to excellence within the automotive industry's supply chain. This certification ensures that our processes are aligned with the highest standards, guaranteeing the delivery of superior products and services to meet the expectations of our automotive clients.

**ISO 9001:2015 Certification:** The ISO 9001:2015 certification reinforces our dedication to consistently delivering reliable products and excellent services across all industries. This globally recognized certification places a strong emphasis on customer satisfaction, continual improvement, and effective communication, all of which are ingrained in our company's core values.

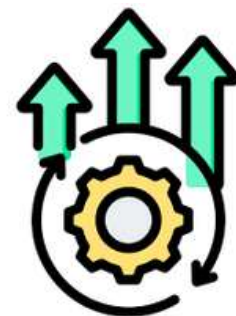
## BENEFITS OF PARTNERING WITH THINKSEMI INFOTECH



**Enhanced Quality Assurance**



**Compliance and Trust**



**Continuous Improvement**



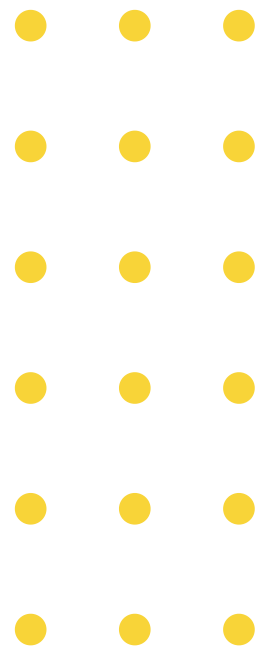
**Customer Satisfaction**



**Enhanced Productivity**

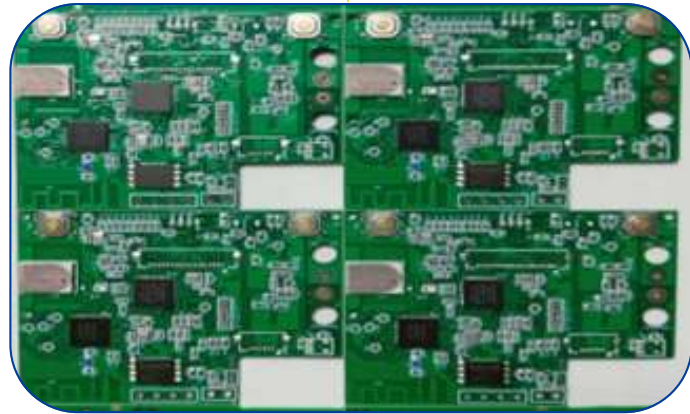


# Authorized Distributor

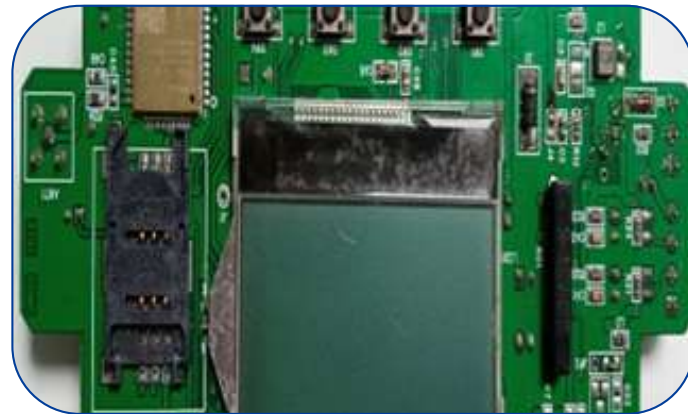


# PCB Gallery

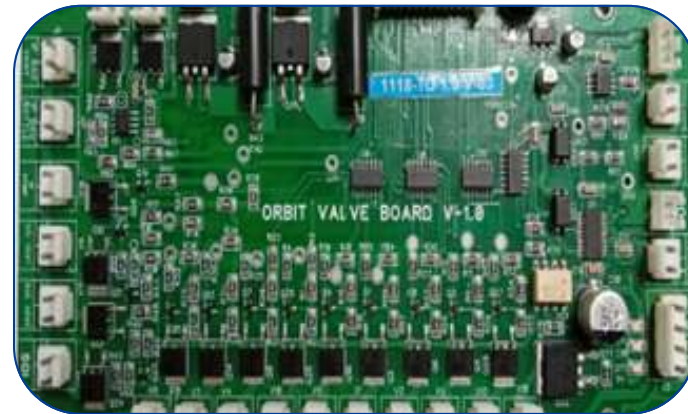
Medical Sector



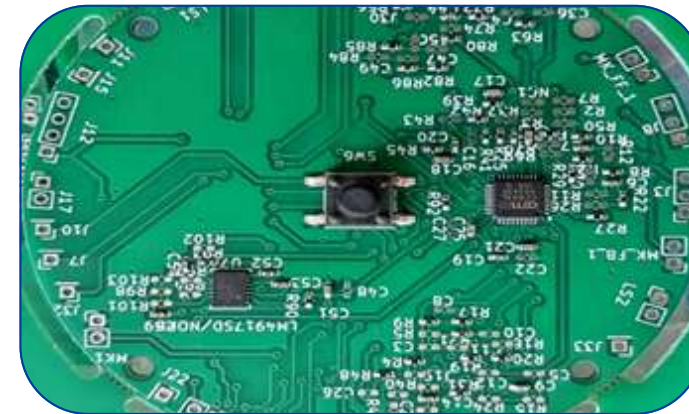
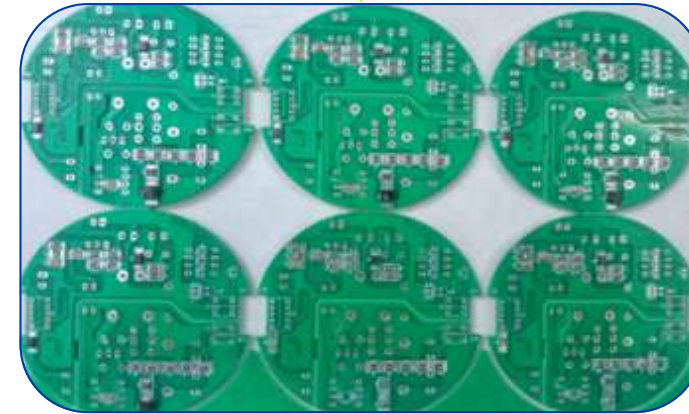
Automotive



IoT & Automation



Consumer Electronics



Power Management



# CUSTOMER SEGMENT

We are serving 100+ customers from various segments



**Automotive**



**Medical Sector**



**Consumer Electronics**



**Telematics**



**Defense**



**Electric vehicle**



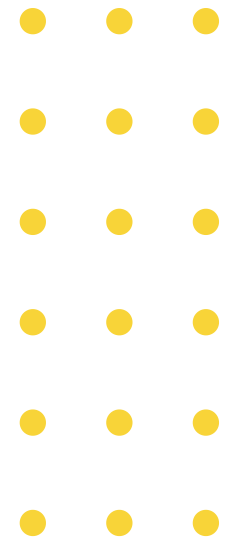
**Telecom**



**Power Sector**

# POWER BACKUP

RELIABLE POWER BACKUP TO ENSURE CONTINUOUS OPERATIONS



Dedicated Transformer

250 KW



Diesel Generators

200 KVA



Solar

150 kW



UPS

120 KVA

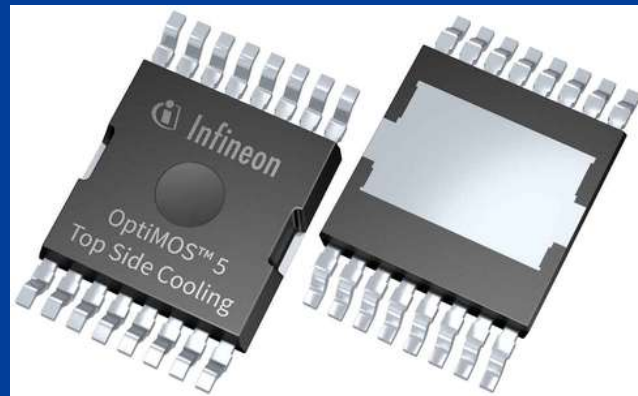
# Wire Harness & Cable Assembly



- OEM 2-WHEELER EV CONVERSION KITS
- OEM 3-WHEELER EV FULL HARNESS SETS
- OEM 4-WHEELER DIAGNOSTICS, GPS, KEYLESS ASSEMBLIES
- MEDICAL EQUIPMENT CABLE ASSEMBLIES
- TELECOMMUNICATION CABLE ASSEMBLIES
- PCB CABLE ASSEMBLIES
- INDUSTRIAL WIRING HARNESSES
- COAXIAL CABLE ASSEMBLIES
- POWER SUPPLY HARNESS ASSEMBLIES
- RIBBON CABLE ASSEMBLIES
- ANTENNA CABLE ASSEMBLIES
- ELECTROMECHANICAL WIRE HARNESS ASSEMBLIES



# ELECTRONIC COMPONENTS DISTRIBUTION



**AUTHORIZED  
DISTRIBUTORS**

**QUECTEL**

**SAMWHA**

**DEGSON**

**Union  
materials**

**WTL**

**CDIL**

**MUP**  
SHENZHEN MUP INDUSTRIAL CO.,LTD.

**SemiHow**  
Know-How for Semiconductor

**Viking**

**Glan**

- 12+ years of experience in sourcing to support obsolete & Hard to find parts.
- We can provide Manufacturer COC from our authorized distribution line.
- We can provide a third-party laboratory report for component authenticity.

# AWARDS & RECOGNITIONS



Best Startup of the year (Manufacturing)  
by MSME India business awards 2022  
(October)



Won the SME-Empowering India  
Awards 2023 (April) in the category of  
Electronics Manufacturing

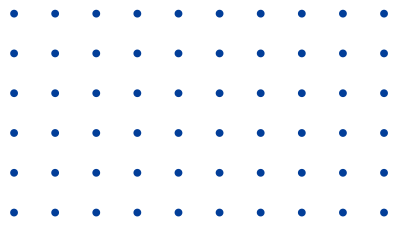


Won the MSME India Business Awards  
2023 (June) - Best Entrepreneur of the  
Year (Automotive)



Won the ELCINA Awards 2023  
(September)- 1st prize in the Most  
Promising Start-ups (Electronics  
Manufacturing Services)


# LOCATIONS



We have offices in Shenzhen, Hong Kong, Singapore, and India, strategically located to serve clients across the globe.

---

 **Head office**  
Siruseri, Chennai

 **Overseas office**  
Singapore, Hong Kong,  
Shenzhen

 **Branch office**  
Bangalore





**THANK YOU**

**WE LOOK FORWARD TO  
BUSINESS OPPORTUNITIE**

**For Enquiry Contact**

Sudharsan Ramajeyam – Managing Director  
+91-9840393845, sudharsan@thinksemi.co.in

[www.thinksemiinfotech.com](http://www.thinksemiinfotech.com)